

# SNELLERS

ESTATE AGENTS



## Ember Lane, KT10

£4,500 PCM

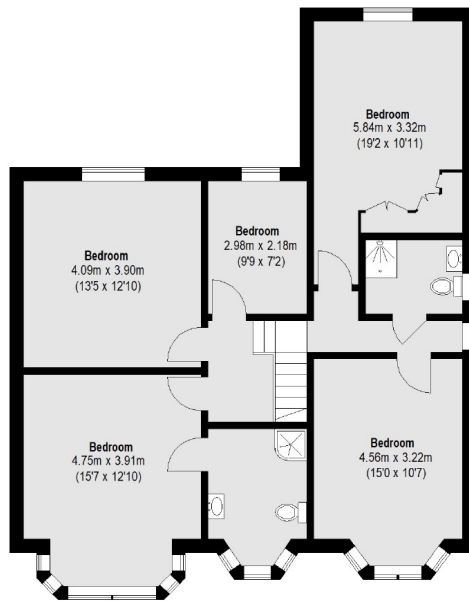
Stunning five bedroom family home situated in a very sought after area of Esher. The property comprises spacious front reception room, through lounge, large eat-in kitchen, two bathrooms (one being en-suite), downstairs WC, office room, parking for two cars and large rear garden.

Only 0.5 miles from Thames Ditton Train Station and 0.7 miles from Esher Train Station.

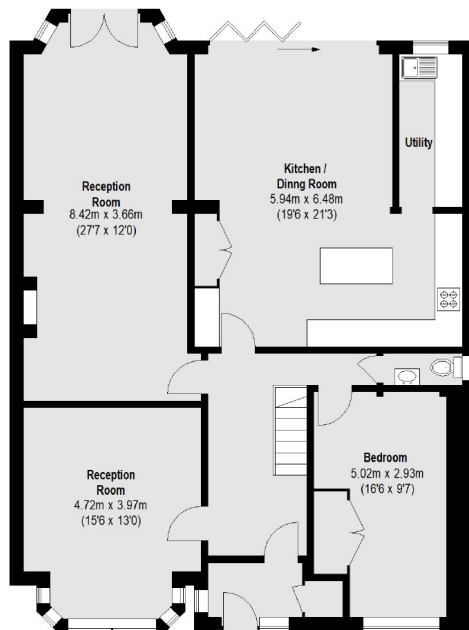
- Family Home • Five Double Bedrooms • Large Eat-in Kitchen •
- Two Bathrooms • Driveway Parking • Modern Throughout •

# SNELLERS

ESTATE AGENTS



First Floor



Ground Floor

Total area (approx.): 215.3 sq. m (2318 Sq. ft)

Snellers Kingston Lettings  
17-21 Richmond Road  
Kingston  
KT2 5BW  
020 8546 0505  
[kingstonlettings@snellers.co.uk](mailto:kingstonlettings@snellers.co.uk)

Energy Rating: E We aim to make our particulars both accurate and reliable. However they are not guaranteed; nor do they form part of an offer or contract. If you require clarification on any points then please contact us, especially if you're traveling some distance to view. Please note that appliances and heating systems have not been tested and therefore no warranties can be given as to their good working order