

SNELLERS

ESTATE AGENTS



Rosebery Road, KT1

£2,295 PCM

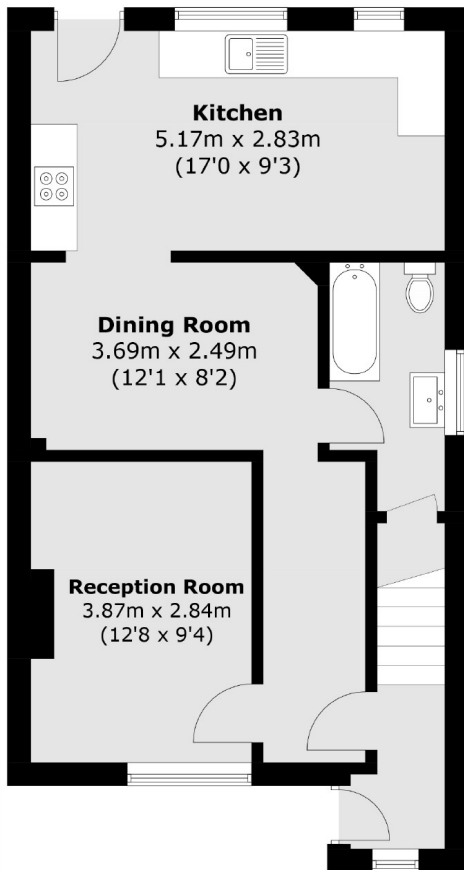
Newly refurbished 4-bedroom house with modern kitchen, bathroom, and private garden. Split over two floors, this spacious home offers stylish, comfortable living, ideal for professional sharers seeking luxury and convenience in a vibrant location.

Rosebery Road offers prime convenience near Norbiton Station and central Kingston. Enjoy nearby shopping, dining, and riverside walks, with easy access to Richmond Park, the A3, and excellent local schools and leisure facilities.

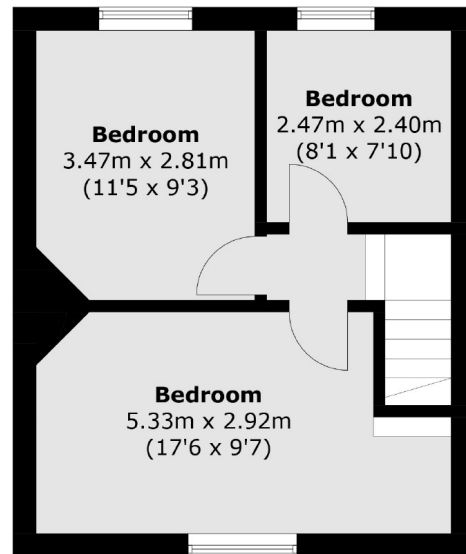
- Four Spacious Bedrooms • Newly Refurbished • Large Private Garden •
- New Bathroom • Central Location • Close To A3 •

SNELLERS

ESTATE AGENTS



Ground Floor



First Floor

Total area (approx.): 86.1 sq. m (926.7 sq. ft)

Snellers Kingston Lettings
17-21 Richmond Road
Kingston
KT2 5BW
020 8546 0505
kingstonlettings@snellers.co.uk

Energy Rating: We aim to make our particulars both accurate and reliable. However they are not guaranteed; nor do they form part of an offer or contract. If you require clarification on any points then please contact us, especially if you're traveling some distance to view. Please note that appliances and heating systems have not been tested and therefore no warranties can be given as to their good working order