

SNELLERS

ESTATE AGENTS



Rosebery Road, KT1

£2,700 PCM

Newly refurbished 4-bedroom house with modern kitchen, bathroom, and private garden. Split over two floors, this spacious home offers stylish, comfortable living, ideal for professional sharers seeking luxury and convenience in a vibrant location.



This beautifully refurbished 4-bedroom house, split across two floors, is perfect for professional sharers. With a modern kitchen and bathroom, the home offers a sleek, sophisticated design ideal for contemporary living.

Each bedroom is generously sized, providing ample space and privacy. The spacious layout is complemented by high-end finishes and quality appliances, creating an inviting and comfortable atmosphere throughout the entire property.

Enjoy the private garden for relaxing and entertaining. Located in a vibrant neighborhood with excellent transport links, this home combines luxury and convenience, making it the perfect choice for modern professionals.

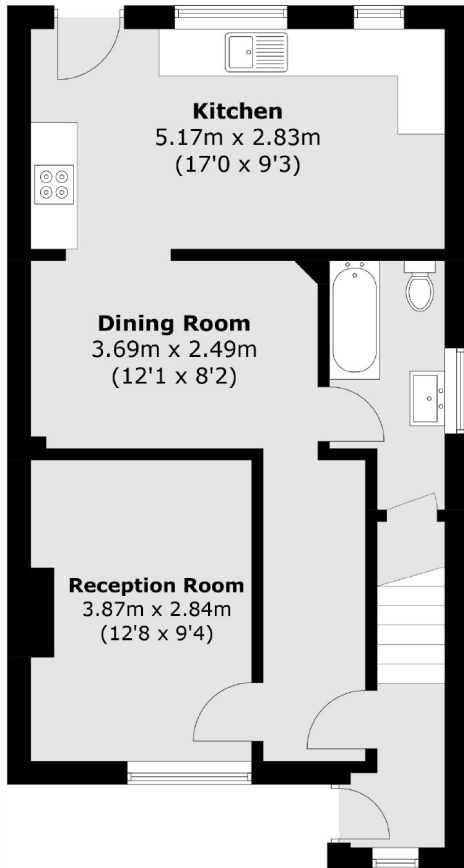
Rosebery Road offers prime convenience near Norbiton Station and central Kingston. Enjoy nearby shopping, dining, and riverside walks, with easy access to Richmond Park, the A3, and excellent local schools and leisure facilities.

- Four Spacious Bedrooms • Newly Refurbished • Large Private Garden •
- New Bathroom • Central Location • Close To A3 •

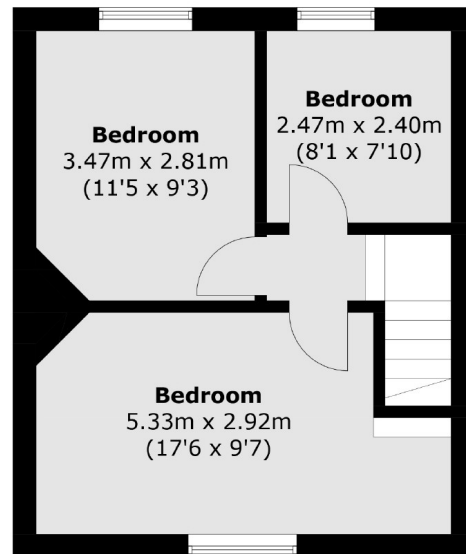


SNELLERS

ESTATE AGENTS



Ground Floor



First Floor

Total area (approx.): 86.1 sq. m (926.7 sq. ft)

Snellers Kingston Lettings
17-21 Richmond Road
Kingston
KT2 5BW
020 8546 0505
kingstonlettings@snellers.co.uk

Energy Rating: We aim to make our particulars both accurate and reliable. However they are not guaranteed; nor do they form part of an offer or contract. If you require clarification on any points then please contact us, especially if you're traveling some distance to view. Please note that appliances and heating systems have not been tested and therefore no warranties can be given as to their good working order