

# SNELLERS

ESTATE AGENTS



## Cotswold Close, KT2

£4,500 PCM

This expansive 2,200 sq ft Neo-Georgian home features five bedrooms, including two en suites, four reception rooms, a private patio garden, off-street parking for four cars, and a large garage, offering both luxury and practicality for family living.





This 2,200 sq ft Neo-Georgian family home exudes timeless elegance and modern luxury. It features five spacious bedrooms, two of which have en suite bathrooms, alongside a well-appointed family bathroom, perfect for accommodating family and guests.

With four reception rooms, this home offers plenty of space for relaxation, entertaining, and family gatherings. The private, landscaped patio garden is ideal for outdoor dining and enjoying peaceful moments, making it a wonderful extension of the indoor living space.

Additional highlights include off-street parking for four cars and a large garage, offering ample storage and convenience. This property combines comfort, style, and practicality in a prime location, perfect for a modern family lifestyle.

Cotswold Close, located off Kingston Hill, offers easy access to Richmond Park and Coombe Wood Golf Course. Kingston and Wimbledon town centres, just 3 miles away, provide excellent shopping, theatres, and transport links to Central London.

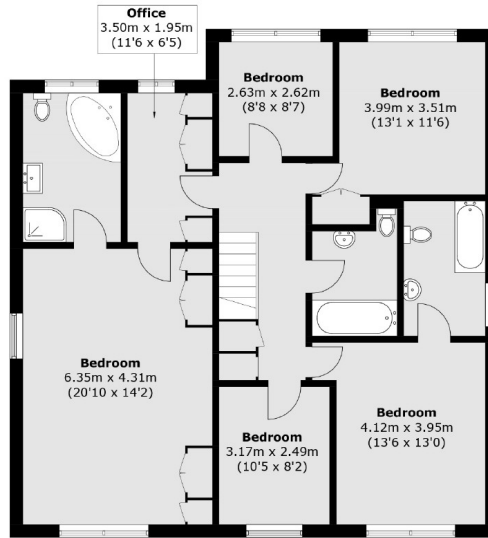
- Five Bedrooms • Three Bathrooms • Four Reception Rooms •
- Private Patio Garden • Off-Street Parking • 2,200 Sq.Ft •
- Neo-Georgian Style •



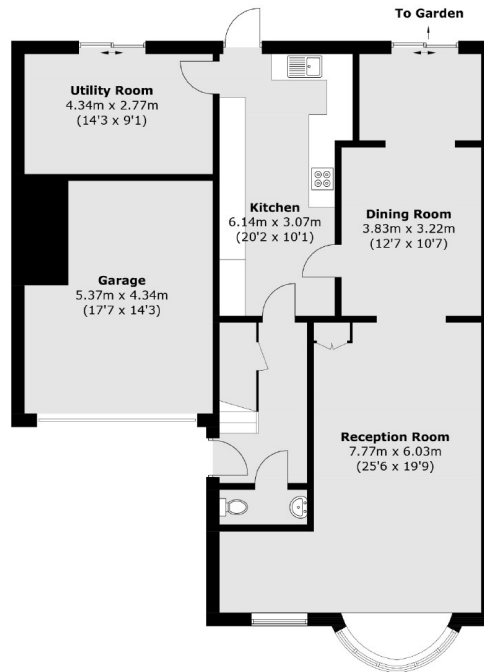


# SNELLERS

ESTATE AGENTS



**First Floor**



**Ground Floor**

Total area (approx.): 203.8 sq. m (2,193.7 sq. ft)  
Garage: 23.3 sq. m (250.8 sq. ft)

Snellers Kingston Lettings  
17-21 Richmond Road  
Kingston  
KT2 5BW  
020 8546 0505  
kingstonlettings@snellers.co.uk

Energy Rating: We aim to make our particulars both accurate and reliable. However they are not guaranteed; nor do they form part of an offer or contract. If you require clarification on any points then please contact us, especially if you're traveling some distance to view. Please note that appliances and heating systems have not been tested and therefore no warranties can be given as to their good working order