

SNELLERS

ESTATE AGENTS



Ewell Road, KT6

£4,500 PCM

This stunning five/six bedroom semi-detached house on Ewell Road features spacious living areas, a family-friendly garden, a ground-floor double bedroom and bathroom, four double bedrooms upstairs, off-street parking, air conditioning, and a loft room, offering comfort and convenience throughout.



This stunning five/six bedroom semi-detached house on Ewell Road, Surbiton, features a spacious ground floor with a large porch, entrance hall, and two reception rooms. The front room has a bay window, while French doors open to the rear garden.

The family-friendly rear garden includes a separate patio, perfect for outdoor dining and barbecues. With a downstairs bathroom and double bedroom, the house is ideal for those needing ground-floor amenities, providing comfort and convenience.

Upstairs are four double bedrooms with built-in storage, a single bedroom, a family bathroom, and an en-suite to the master. Additional features include a double loft room, ground-floor study, off-street parking, and air conditioning.

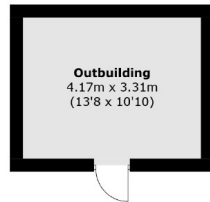
Ewell Road offers excellent connectivity, just 0.4 miles from Tolworth rail station and 1.1 miles from Surbiton station, where direct trains reach Waterloo in 16 minutes. With local shops, amenities, and a bus stop just a 3-5 minute walk away, it's ideal for commuters.

- Five/Six Bedrooms • Two Receptions • Three Bathrooms •
- Office/Study • Off-Street Parking • Central Location •

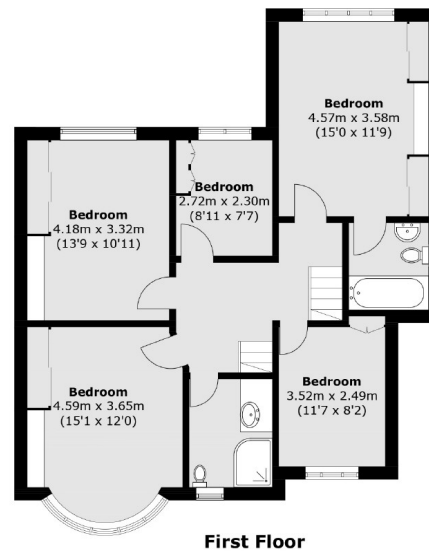
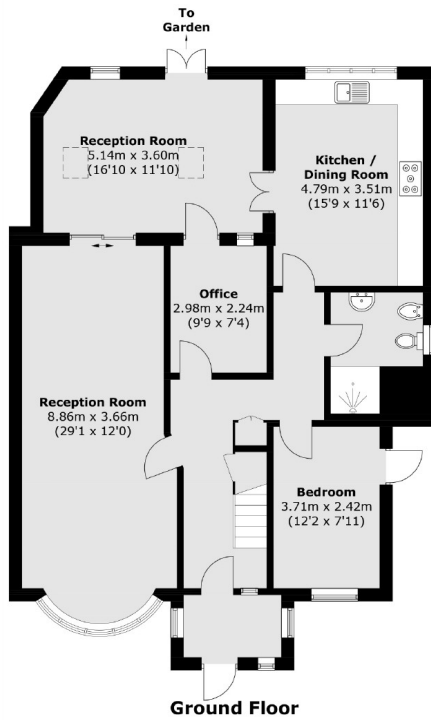
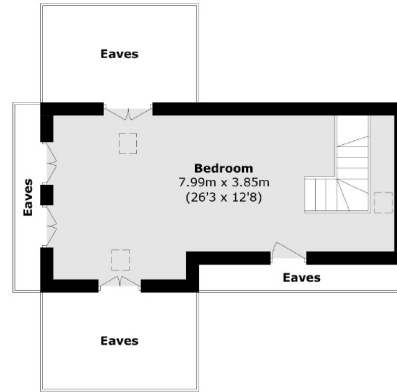


SNELLERS

ESTATE AGENTS



(Not Shown In Actual
Location / Orientation)



Total area (approx.): 220.9 sq. m (2377.7 sq. ft)
Outbuilding area : 13.9 sq. m (19.6 sq. ft)

Snellers Kingston Lettings
17-21 Richmond Road
Kingston
KT2 5BW
020 8546 0505
kingstonlettings@snellers.co.uk

Energy Rating: We aim to make our particulars both accurate and reliable. However they are not guaranteed; nor do they form part of an offer or contract. If you require clarification on any points then please contact us, especially if you're traveling some distance to view. Please note that appliances and heating systems have not been tested and therefore no warranties can be given as to their good working order