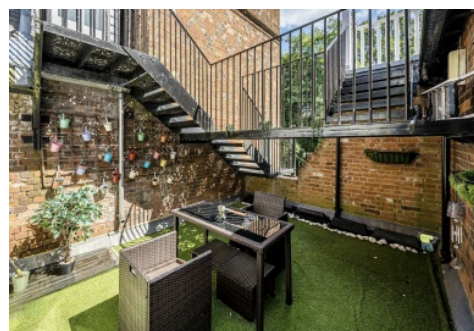


SNELLERS

ESTATE AGENTS



Devey Close, KT2

£3,500 PCM

Charming three-bedroom duplex in a period building on Coombe Estate. Features a bright reception room with original fireplace, modern kitchen, private patio, and balcony. Access to communal gardens, off-street parking, and secure gated community living.

Situated in the prestigious Coombe Hill Estate, Devey Close offers tranquil living near the A3, Kingston, Richmond Park, and Wimbledon Common. Close to top schools, golf courses, and local amenities, with easy access to shops, cafes, and more.

- Three-Bedroom Duplex
- Period Building
- Private Patio Balcony
- Communal Gardens
- Gated Community
- Prime Coombe

Location •

SNELLERS

ESTATE AGENTS

Snellers Kingston Lettings
17-21 Richmond Road
Kingston
KT2 5BW
020 8546 0505
kingstonlettings@snellers.co.uk

Energy Rating: We aim to make our particulars both accurate and reliable. However they are not guaranteed; nor do they form part of an offer or contract. If you require clarification on any points then please contact us, especially if you're traveling some distance to view. Please note that appliances and heating systems have not been tested and therefore no warranties can be given as to their good working order