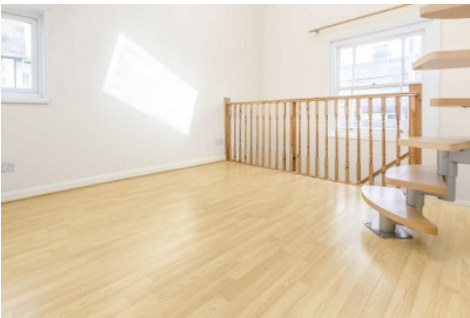


# SNELLERS

ESTATE AGENTS



## Kings Road, KT2

£1,575 PCM

This charming one-bedroom maisonette features a split-level design with a mezzanine level above the bedroom, offering flexible space for various uses. The apartment is bathed in natural light and includes brand new carpets throughout. It also boasts a private patio garden, perfect for unwinding and entertaining. Energy Rating: D.

- One Bedroom • Split-Level • Private Patio Garden •
- Mezzanine Level • Close To Richmond Park • Close To Station •

Snellers Kingston Lettings  
17-21 Richmond Road,  
Kingston, KT2 5BW  
020 8546 0505  
kingstonlettings@snellers.co.uk



snellers.co.uk