

SNELLERS

ESTATE AGENTS



Grove Avenue, SM1

£2,000 PCM

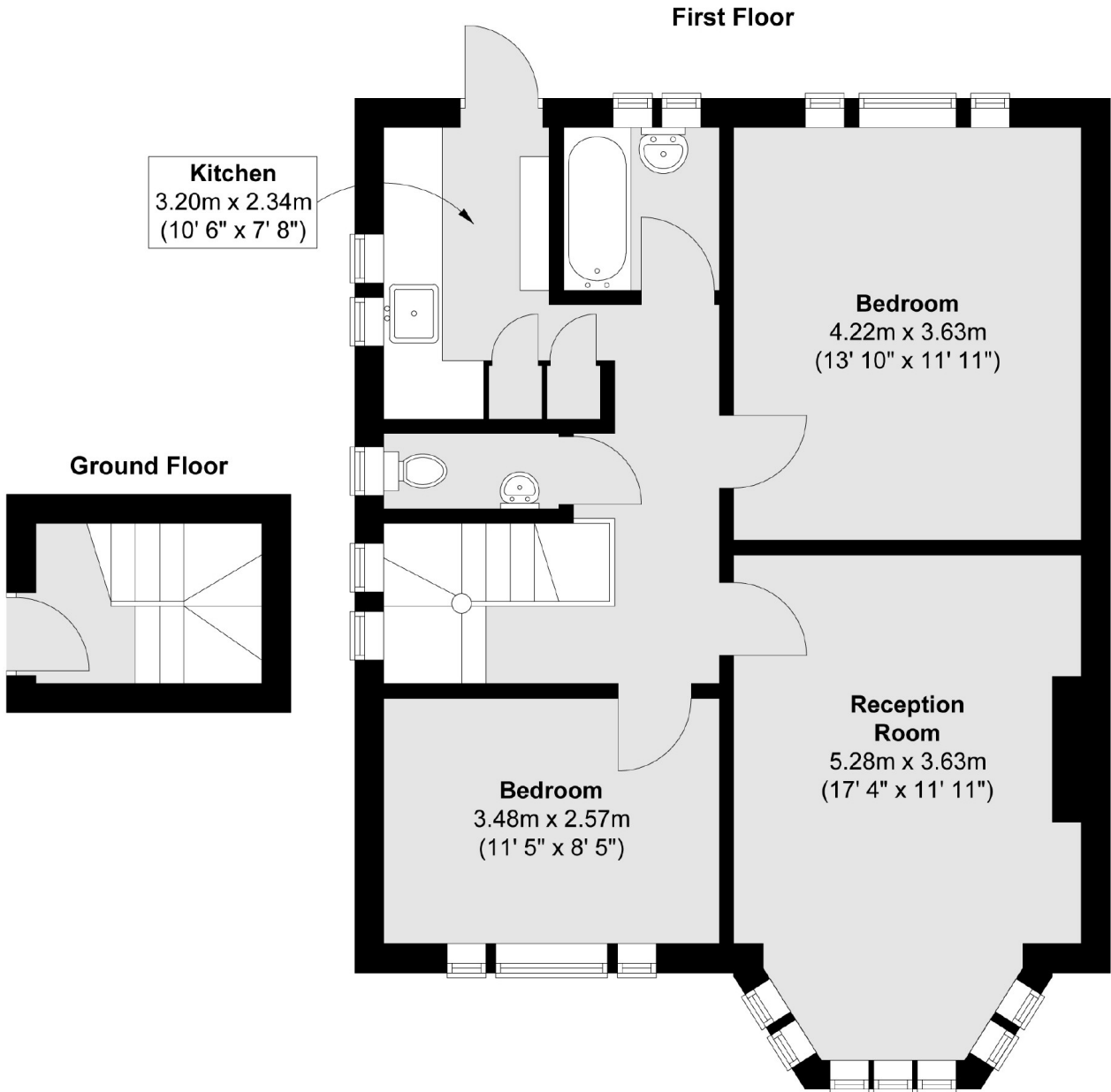
This brand newly refurbished two double bedroom apartment has been finished to a high standard throughout. The property benefits from new carpets, a new bathroom, a new kitchen and access to well-maintained communal gardens.

Grove Avenue is perfectly located for Sutton, West Sutton and Cheam Train Stations. This property is also a short walk from the array of shops, bars and restaurants that Sutton has to offer.

- Newly Refurbished
- Two Double Bedrooms
- New Bathroom
- New Kitchen
- Communal Gardens
- Central Location

SNELLERS

ESTATE AGENTS



Total area (approx.) : 69.2 sq. m (745 sq. ft)

Snellers Kingston Lettings
17-21 Richmond Road
Kingston
KT2 5BW
020 8546 0505
kingstonlettings@snellers.co.uk

Energy Rating: C We aim to make our particulars both accurate and reliable. However they are not guaranteed; nor do they form part of an offer or contract. If you require clarification on any points then please contact us, especially if you're traveling some distance to view. Please note that appliances and heating systems have not been tested and therefore no warranties can be given as to their good working order