

SNELLERS

ESTATE AGENTS



Coombe End, KT2

£9,000 PCM

Nestled within an expansive plot measuring 0.31 of an acre, resides an exquisite family home boasting five bedrooms, three bathrooms and over 3,000 sq.ft of living accommodation.

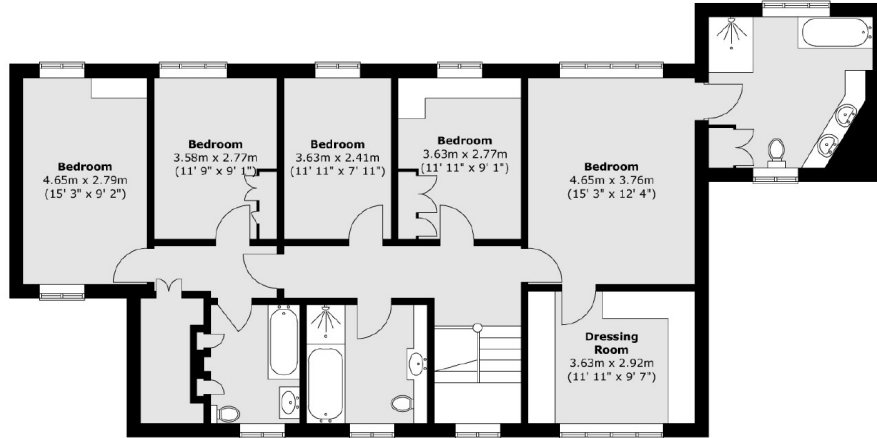
Coombe End is graciously located in the coveted location of Coombe. Superbly positioned to embrace the vibrant ambiance of Wimbledon and Kingston-upon-Thames, as well as the proximity to excellent local state and independent schools, this residence offers an unparalleled lifestyle.

- Five Bedrooms • Three Bathrooms • Four Reception Rooms •
- Utility Room • Gym • Over 3,000 Sq.Ft •

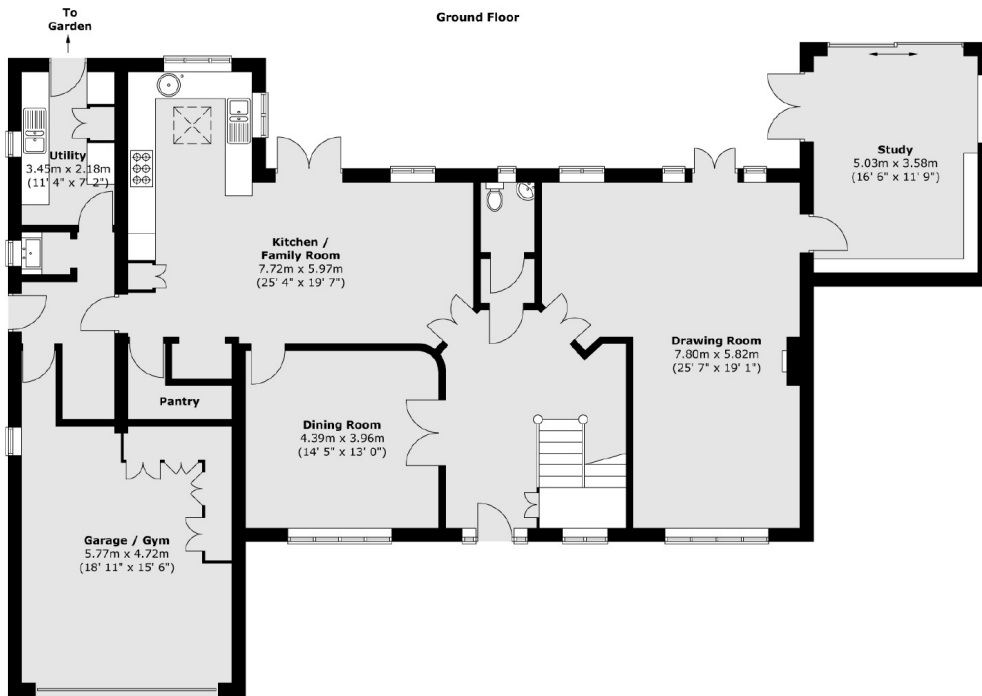
SNELLERS

ESTATE AGENTS

First Floor



Ground Floor



Total area (approx.) : 308.2 sq. m (3318 sq. ft)
(Including garage / gym)

Snellers Kingston Lettings
17-21 Richmond Road
Kingston
KT2 5BW
020 8546 0505
kingstonlettings@snellers.co.uk

Energy Rating: We aim to make our particulars both accurate and reliable. However they are not guaranteed; nor do they form part of an offer or contract. If you require clarification on any points then please contact us, especially if you're traveling some distance to view. Please note that appliances and heating systems have not been tested and therefore no warranties can be given as to their good working order