

5 SHEPHERDS FARM

MAIN ROAD, LONG HANBOROUGH OX29 8DL

5 Shepherds Farm

Main Road, Long Hanborough OX29 8DL

Shepherds Farm enjoys a prime spot in the heart of this desirable village with its thriving community, local shops, primary school and the mainline rail link to Oxford/ Paddington. In the same family ownership for almost 30 years this superb home offers generous accommodation over two floors alongside beautiful views across the Blenheim Estate that can be enjoyed from not only the garden but also the conservatory, and first floor windows. The sitting room has a fireplace and opens to the conservatory with a playroom/study currently set with a built-in cinema screen, modern gloss kitchen, and WC complete the ground floor.

Delightful, generous gardens afford a high degree of privacy, and the superb decked area offers space for some alfresco dining or just a glorious place to sit and enjoy the views across the seasons. To the front the driveway offers parking for three cars with two useful storage sheds.

GUIDE PRICE

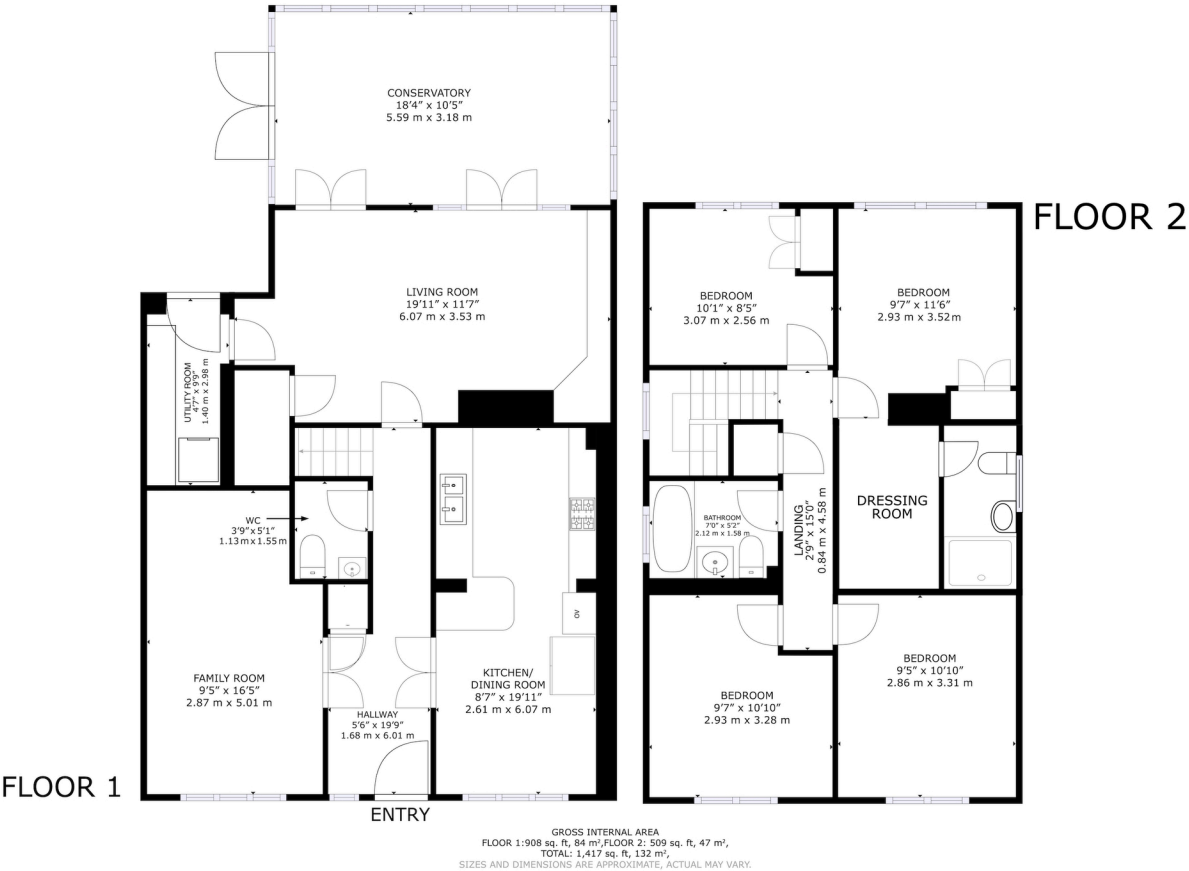
£700,000



Generous







Council Tax:
Band D - £2,402.65

Parking:
Off-street parking for several cars

Local Authority:
West Oxfordshire District Council

Energy Efficiency Rating		Current	Potential
Very energy efficient - lower running costs			
(92+)	A		
(81-91)	B		81
(69-80)	C	69	
(55-68)	D		
(39-54)	E		
(21-38)	F		
(1-20)	G		
Not energy efficient - higher running costs			
England, Scotland & Wales		EU Directive 2002/91/EC	

“LOCATION COMMENT

Long Hanborough is well positioned in the triangle between Witney, Oxford and Woodstock. Its facilities include a primary school, doctors surgery, pharmacy, dentist, Co-op store with late night opening hours, post office, hairdressers, two public houses, petrol station and garage. The village is well placed for access to major routes including the A40 and A44. Local secondary schools include Bartholomew School in Eynsham and Marlborough School in Woodstock. There are local, daily bus services to Witney, Woodstock and Oxford. Woodstock 3 miles, Witney 6 miles, Oxford 9 miles.



OUR NETWORK OF OFFICES ACROSS OXFORDSHIRE

Breckon & Breckon
est.1947



Every office has access to
every buyer registered across
our network of seven offices.

Sharing a single database of
buyers ensures maximum
exposure for our clients.

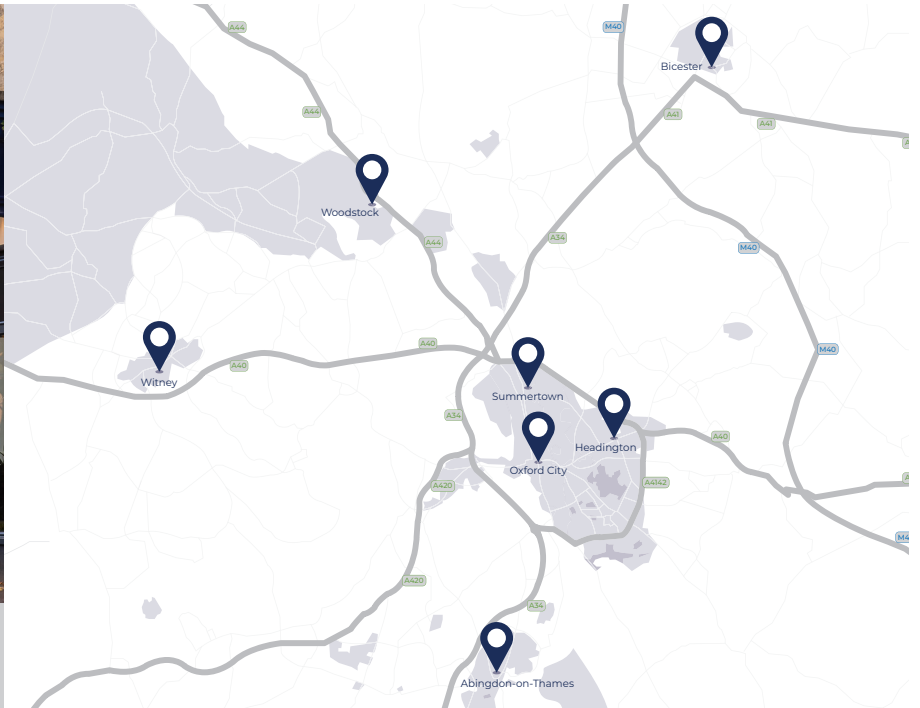
Witney Sales

10 Market Square
Witney
Oxfordshire
OX28 6BB

t: 01993 776 775
e: witney@breckon.co.uk



FROM LEFT: Alexander Chappell,
Julia Briggs, Sarah Thomas,
Madison Peedell, John Bouwer



Summertown

t: 01865 310 300 (sales)
t: 01865 20 1111 (letting)
e: summertown@breckon.co.uk

Oxford City Centre

t: 01865 244 735 (sales)
t: 01865 20 1111 (letting)
e: post@breckon.co.uk

Headington

t: 01865 750 200 (sales)
t: 01865 763 999 (letting)
e: headington@breckon.co.uk

Abingdon-on-Thames

t: 01235 550 550 (sales)
t: 01235 554 040 (letting)
e: abingdon@breckon.co.uk

Woodstock

t: 01993 811 881 (sales)
t: 01993 810 100 (letting)
e: woodstock@breckon.co.uk

Bicester

t: 01869 24 24 23 (sales & letting)
e: bicester@breckon.co.uk

New Homes

t: 01865 261 222
e: newhomes@breckon.co.uk

Land Team

t: 01865 558 999
e: land@breckon.co.uk

Letting and Property Management

t: 01865 20 1111
e: lettings@breckon.co.uk

Creative Department

t: 01865 310 300
e: creative@breckon.co.uk

Bespoke by Breckon

t: 01865 765 555
e: bespoke@breckon.co.uk



breckon.co.uk

IMPORTANT NOTICE: These particulars are for information purposes only and do not in whole or in part constitute or form part of any offer or contract, nor should any statement obtained herein be relied upon as a statement or representation of fact. Breckon & Breckon do not test whether the services connected to the property, heating systems and domestic appliances are in working order. We therefore recommend that the purchaser obtains verification from their surveyor or solicitor. Whilst every attempt has been made to ensure the accuracy of the floor plans contained here, measurements of doors, windows and rooms are approximate and no responsibility is taken for any error, omission or mis-statement. These plans are for representation purposes only as defined by the RICS code of measuring practice and should be used as such by any possible purchaser.