

UPHAM HOUSE

THE LANES, BAMPTON OX18 2JG

Upham House

The Lanes, Bampton OX18 2JG

Nestled in the heart of the pretty village of Bampton, this exceptional family home enjoys a gated, tucked-away position along The Lanes is just a five minute walk from the extensive array of amenities in the pretty village centre. This beautifully presented home offers a perfect blend of traditional charm with its wood burning stove and Aga kitchen, and modern luxury. The generously sized sitting room has a welcoming wood-burning stove, and the four reception rooms offer superb space for family entertaining. On the first floor there are four double bedrooms and three contemporary fitted bathrooms. Entrance to the light-filled studio is through a bedroom and the studio has a staircase leading to the ground floor and its own front door, offering the potential for a separate annex. Outside, the generous outdoor space affords good privacy and the well-tended, landscaped gardens provide a delightful escape from the everyday busy life. Further attributes are the double garage and ample gated parking.

**4****4****3**

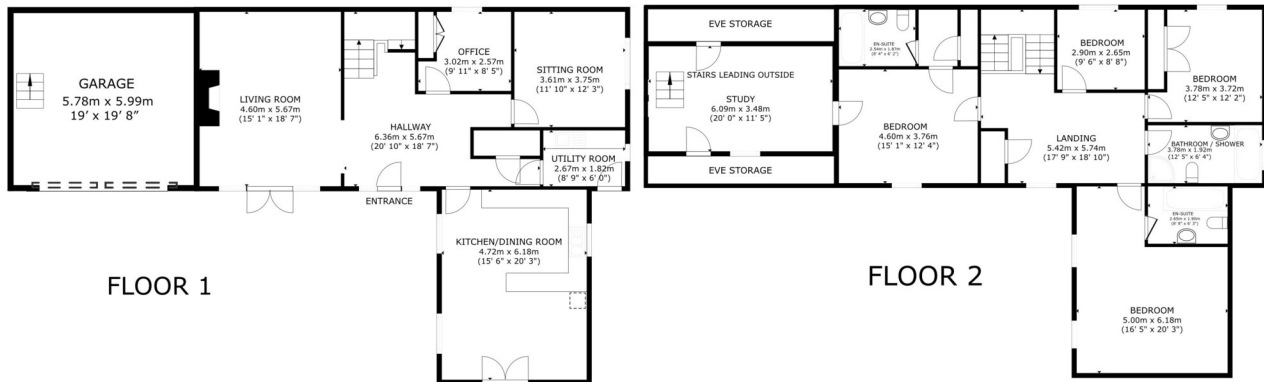
GUIDE PRICE

£1,000,000

**Generous**



Upham House Floor Plan



GROSS INTERNAL AREA
 FLOOR 1 107.9 m² (1,162 sq.ft.) FLOOR 2 133.7 m² (1,439 sq.ft.)
 TOTAL : 241.6 m² (2,601 sq.ft.)
 SIZES AND DIMENSIONS ARE APPROXIMATE, ACTUAL MAY VARY.



Council Tax:
 Band G - £4,082.33

Parking:
 Double Garage & Driveway

Local Authority:
 West Oxfordshire District Council

AWAITING
 EPC

“LOCATION COMMENT

Bampton sits close to the edge of the Cotswolds and is one of the oldest and prettiest villages in the area. While it retains much of the character of the traditional Cotswold village, it is also a hive of activity with a multitude of events taking place throughout the year and renowned as the historic home of Morris dancing, annual Donkey Derby and the village is the location for the fictional Downton - something for everyone. Bampton is also the envy of many of the neighbouring villages in that it boasts an excellent array of amenities for a village of its size. It has a primary school, doctors' surgery, Co-op independent butchers, a post office, library, a sports ground and pavilion, an art gallery, two churches, an array of coffee shops and pubs, and a market square.



OUR NETWORK OF OFFICES ACROSS OXFORDSHIRE

Breckon & Breckon
est.1947



Every office has access to
every buyer registered across
our network of seven offices.

Sharing a single database of
buyers ensures maximum
exposure for our clients.

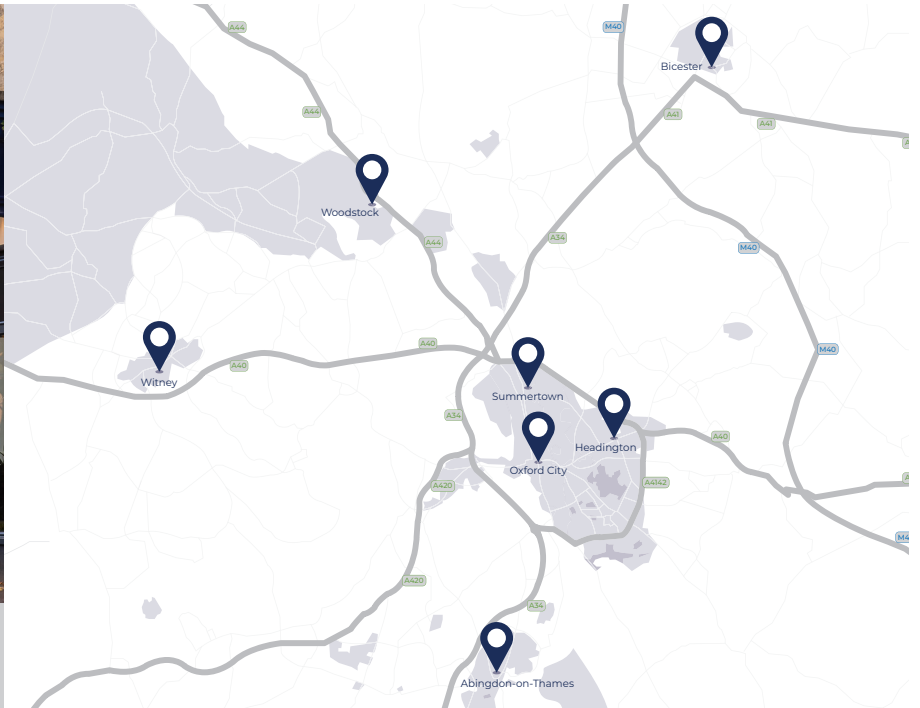
Witney Sales

10 Market Square
Witney
Oxfordshire
OX28 6BB

t: 01993 776 775
e: witney@breckon.co.uk



FROM LEFT: Alexander Chappell,
Julia Briggs, Sarah Thomas,
Madison Peedell, John Bouwer



Summertown

t: 01865 310 300 (sales)
t: 01865 20 1111 (letting)
e: summertown@breckon.co.uk

Oxford City Centre

t: 01865 244 735 (sales)
t: 01865 20 1111 (letting)
e: post@breckon.co.uk

Headington

t: 01865 750 200 (sales)
t: 01865 763 999 (letting)
e: headington@breckon.co.uk

Abingdon-on-Thames

t: 01235 550 550 (sales)
t: 01235 554 040 (letting)
e: abingdon@breckon.co.uk

Woodstock

t: 01993 811 881 (sales)
t: 01993 810 100 (letting)
e: woodstock@breckon.co.uk

Bicester

t: 01869 24 24 23 (sales & letting)
e: bicester@breckon.co.uk

New Homes

t: 01865 261 222
e: newhomes@breckon.co.uk

Land Team

t: 01865 558 999
e: land@breckon.co.uk

Letting and Property Management

t: 01865 20 1111
e: lettings@breckon.co.uk

Creative Department

t: 01865 310 300
e: creative@breckon.co.uk

Bespoke by Breckon

t: 01865 765 555
e: bespoke@breckon.co.uk



IMPORTANT NOTICE: These particulars are for information purposes only and do not in whole or in part constitute or form part of any offer or contract, nor should any statement obtained herein be relied upon as a statement or representation of fact. Breckon & Breckon do not test whether the services connected to the property, heating systems and domestic appliances are in working order. We therefore recommend that the purchaser obtains verification from their surveyor or solicitor. Whilst every attempt has been made to ensure the accuracy of the floor plans contained here, measurements of doors, windows and rooms are approximate and no responsibility is taken for any error, omission or mis-statement. These plans are for representation purposes only as defined by the RICS code of measuring practice and should be used as such by any possible purchaser.