

# CHAPEL COTTAGE

BAMPTON ROAD, BLACK BOURTON OX18 2PD

# Chapel Cottage

Bampton Road, Black Bourton OX18 2PD

Nicely positioned on the edge of the thriving village of Black Bourton this attractive, 18c stone built property offers an abundance of characterful features including medium size garden, including water features, fields beyond and ample two car garage. The village is within easy reach of the Cotswold town of Burford and the bustling market town of Bampton with its array of eateries, shops and recreational amenities. Timber doors, exposed beams, wood burning stove, and stonework are just a few of the period features this wonderful family home has to offer.

Externally, the delightful south facing garden is mainly to the front and planted with a host of mature plants, trees and lawn. The patio area is a wonderful spot for some alfresco entertaining and the whole affords good privacy from stone walls and a Yew hedge. In addition a useful outbuilding and two-car garage. A charming period home offering the opportunity to enjoy village living at its very best.

## GUIDE PRICE

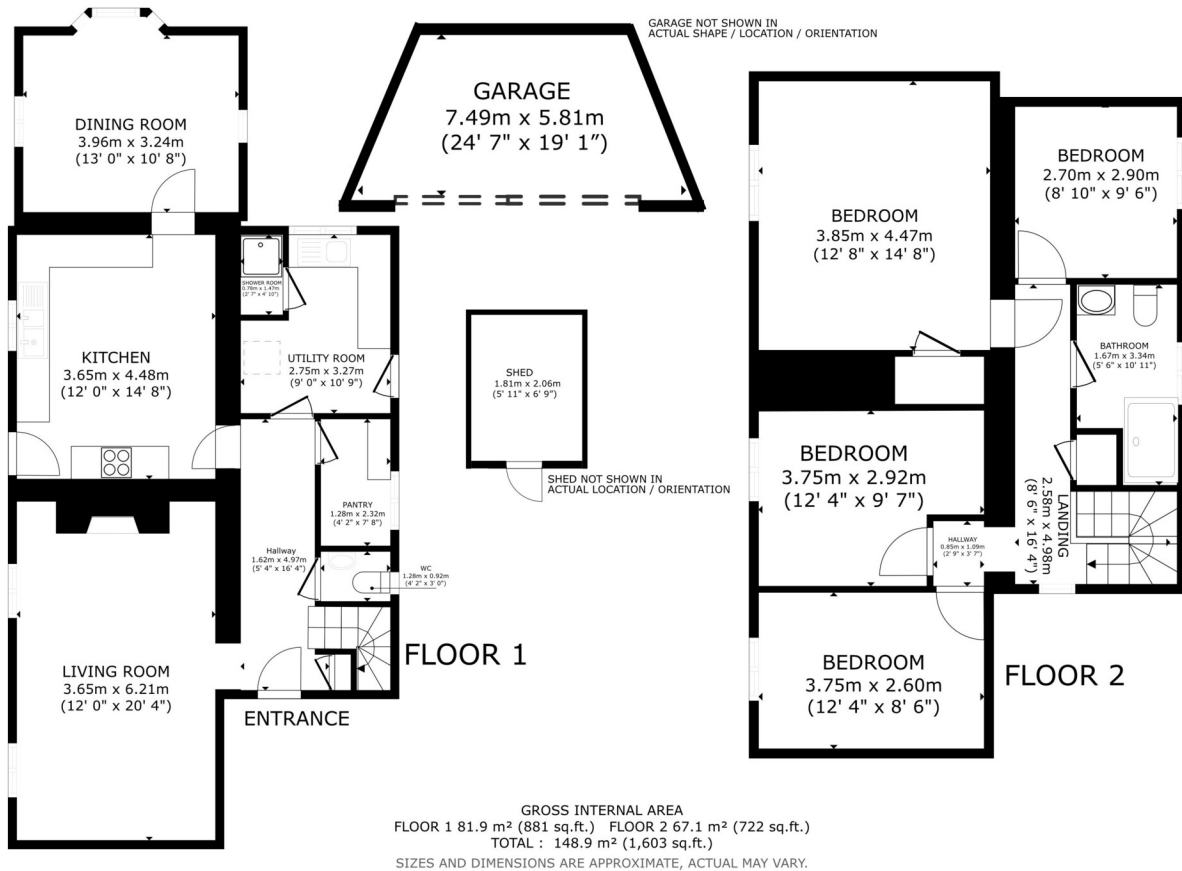
**£775,000**











**Council Tax:**  
Band F - £3,359.06

**Parking:**  
2-car garage

**Local Authority:**  
West Oxfordshire District Council





# “ LOCATION COMMENT

*Black Bourton is a small village about eight miles to the south west of Witney. It has a 12c Norman church which serves as an active community facility and home to many village events, vis Film and gardening clubs, coffee mornings and concerts. The Vines public house, a recreational park with tennis court and village hall shared with the neighbouring village of Alvescot. The larger village of Bampton is less than 5 minutes away and has a good range shops and other amenities including a medical practice. Primary and secondary schools nearby include; Alvescot, Bampton and Clanfield primary schools whilst secondary schools include Burford School and Cokethorpe School near Witney. There is also Hatherop Castle and St Hugh's towards Faringdon.*





## OUR NETWORK OF OFFICES ACROSS OXFORDSHIRE

Breckon & Breckon  
est.1947



**Every office** has access to  
**every buyer** registered across  
our network of seven offices.

Sharing a single database of  
buyers ensures maximum  
exposure for our clients.

### Witney Sales

10 Market Square  
Witney  
Oxfordshire  
OX28 6BB

t: 01993 776 775  
e: witney@breckon.co.uk



FROM LEFT: Alexander Chappell,  
Julia Briggs, Sarah Thomas,  
Madison Peedell, John Bouwer



### Summertown

t: 01865 310 300 (sales)  
t: 01865 20 1111 (letting)  
e: summertown@breckon.co.uk

### Oxford City Centre

t: 01865 244 735 (sales)  
t: 01865 20 1111 (letting)  
e: post@breckon.co.uk

### Headington

t: 01865 750 200 (sales)  
t: 01865 763 999 (letting)  
e: headington@breckon.co.uk

### Abingdon-on-Thames

t: 01235 550 550 (sales)  
t: 01235 554 040 (letting)  
e: abingdon@breckon.co.uk

### Woodstock

t: 01993 811 881 (sales)  
t: 01993 810 100 (letting)  
e: woodstock@breckon.co.uk

### Bicester

t: 01869 24 24 23 (sales & letting)  
e: bicester@breckon.co.uk

### New Homes

t: 01865 261 222  
e: newhomes@breckon.co.uk

### Land Team

t: 01865 558 999  
e: land@breckon.co.uk

### Letting and Property Management

t: 01865 20 1111  
e: lettings@breckon.co.uk

### Creative Department

t: 01865 310 300  
e: creative@breckon.co.uk

### Bespoke by Breckon

t: 01865 765 555  
e: bespoke@breckon.co.uk



breckon.co.uk

IMPORTANT NOTICE: These particulars are for information purposes only and do not in whole or in part constitute or form part of any offer or contract, nor should any statement obtained herein be relied upon as a statement or representation of fact. Breckon & Breckon do not test whether the services connected to the property, heating systems and domestic appliances are in working order. We therefore recommend that the purchaser obtains verification from their surveyor or solicitor. Whilst every attempt has been made to ensure the accuracy of the floor plans contained here, measurements of doors, windows and rooms are approximate and no responsibility is taken for any error, omission or mis-statement. These plans are for representation purposes only as defined by the RICS code of measuring practice and should be used as such by any possible purchaser.