



21 ABELWOOD ROAD

LONG HANBOROUGH OX29 8DD

21 Abelwood Road

Long Hanborough OX29 8DD

Boasting a sought-after address within easy reach of the village primary school, shops, and mainline London rail link, this super family home is a superb opportunity to enjoy village life at its best. The versatile living space features a spacious layout with the former garage converted to a fourth bedroom but this would also make a great playroom or home office, perfect for remote working. Nicely presented and light and airy, the living accommodation flows from the welcoming entrance vestibule into the cosy lounge that enjoys a fireplace with stove and display alcoves either side. The well-appointed kitchen flows through to the dining area, the perfect setting for family meals. To the first floor are three bedrooms and modern bathroom.

Whether you're hosting a summer barbeque with friends or simply unwinding with a book on the patio this outdoor space is set with low-maintenance in mind and provides a safe spot for children and pets alike. The driveway to the front offers off-street parking.

GUIDE PRICE

£350,000

 **3/4**

 **2**

 **1**

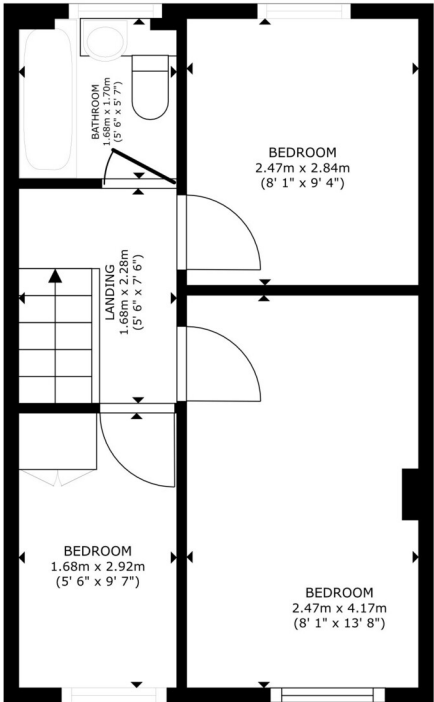
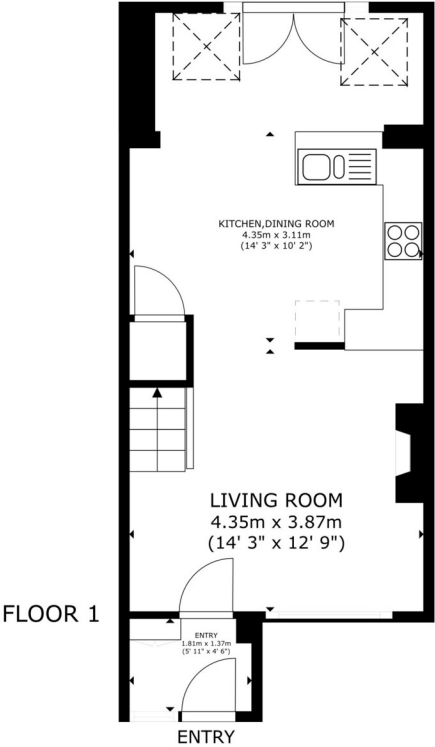
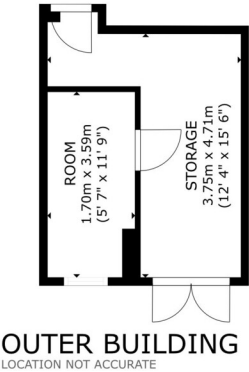


Enclosed





Abelwood Road Floor Plan



GROSS INTERNAL AREA
FLOOR 1 & OUTER BUILDING 58.6 m² (630 sq.ft.) FLOOR 2 30.2 m² (325 sq.ft.)
TOTAL : 88.8 m² (956 sq.ft.)
SIZES AND DIMENSIONS ARE APPROXIMATE, ACTUAL MAY VARY.



Council Tax:
Band C - £125.53

Parking:
Driveway for 2 cars

Local Authority:
West Oxfordshire District Council

Energy Efficiency Rating		Current	Potential
Very energy efficient - lower running costs			
(92+)	A		
(81-91)	B		88
(69-80)	C		
(55-68)	D	59	
(39-54)	E		
(21-38)	F		
(1-20)	G		
Not energy efficient - higher running costs			
England, Scotland & Wales		EU Directive 2002/91/EC	

LOCATION COMMENT

Long Hanborough is well positioned in the triangle between Witney, Oxford and Woodstock. Its facilities include a railway station with a regular service to Oxford and London Paddington, a primary school, doctors surgery and pharmacy, dentist, Co-op store with late night opening hours, post office, hairdressers, two public houses, petrol station and garage. The village is well placed for access to major routes including the A40 and A44. Local secondary schools include Bartholomew School in Eynsham and Marlborough School in Woodstock. There are local, daily bus services to Witney, Woodstock and Oxford. Woodstock 3 miles, Witney 6 miles, Oxford 9 miles.



OUR NETWORK OF OFFICES ACROSS OXFORDSHIRE

Breckon & Breckon
est.1947



Every office has access to
every buyer registered across
our network of seven offices.

Sharing a single database of
buyers ensures maximum
exposure for our clients.

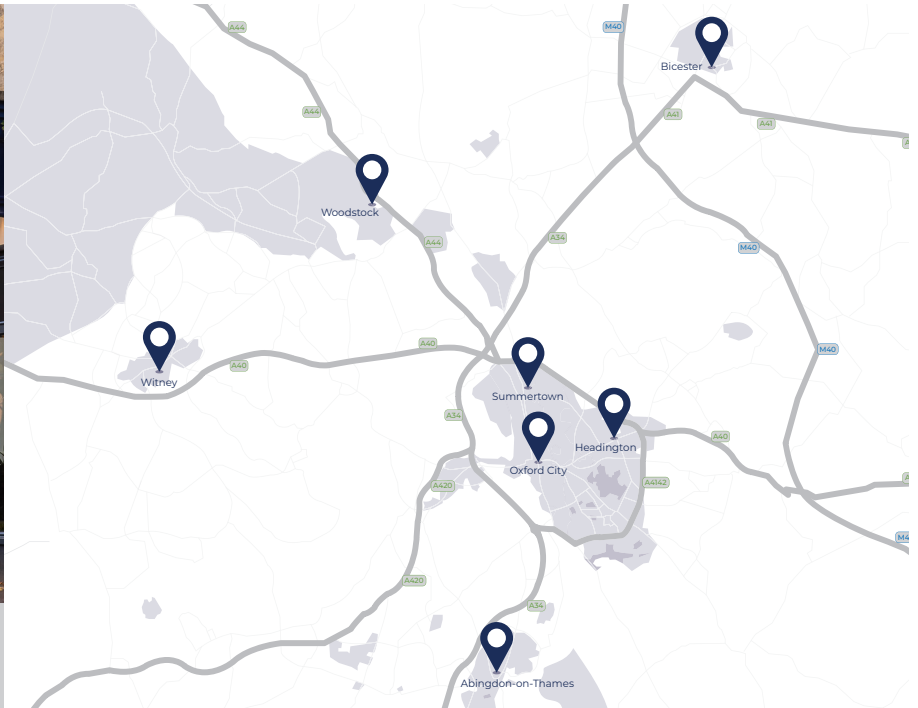
Witney Sales

10 Market Square
Witney
Oxfordshire
OX28 6BB

t: 01993 776 775
e: witney@breckon.co.uk



FROM LEFT: Alexander Chappell,
Julia Briggs, Sarah Thomas,
Madison Peedell, John Bouwer



Summertown

t: 01865 310 300 (sales)
t: 01865 20 1111 (letting)
e: summertown@breckon.co.uk

Oxford City Centre

t: 01865 244 735 (sales)
t: 01865 20 1111 (letting)
e: post@breckon.co.uk

Headington

t: 01865 750 200 (sales)
t: 01865 763 999 (letting)
e: headington@breckon.co.uk

Abingdon-on-Thames

t: 01235 550 550 (sales)
t: 01235 554 040 (letting)
e: abingdon@breckon.co.uk

Woodstock

t: 01993 811 881 (sales)
t: 01993 810 100 (letting)
e: woodstock@breckon.co.uk

Bicester

t: 01869 24 24 23 (sales & letting)
e: bicester@breckon.co.uk

New Homes

t: 01865 261 222
e: newhomes@breckon.co.uk

Land Team

t: 01865 558 999
e: land@breckon.co.uk

Letting and Property Management

t: 01865 20 1111
e: lettings@breckon.co.uk

Creative Department

t: 01865 310 300
e: creative@breckon.co.uk

Bespoke by Breckon

t: 01865 765 555
e: bespoke@breckon.co.uk



IMPORTANT NOTICE: These particulars are for information purposes only and do not in whole or in part constitute or form part of any offer or contract, nor should any statement obtained herein be relied upon as a statement or representation of fact. Breckon & Breckon do not test whether the services connected to the property, heating systems and domestic appliances are in working order. We therefore recommend that the purchaser obtains verification from their surveyor or solicitor. Whilst every attempt has been made to ensure the accuracy of the floor plans contained here, measurements of doors, windows and rooms are approximate and no responsibility is taken for any error, omission or mis-statement. These plans are for representation purposes only as defined by the RICS code of measuring practice and should be used as such by any possible purchaser.