



Farmers Close, Witney

Breckon & Breckon
est. 1947

75 Farmers Close

Witney OX28 1NP

£350,000

Guide Price



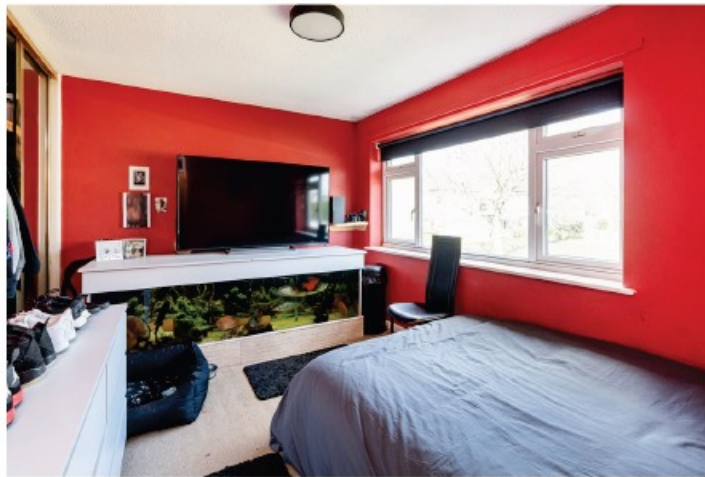
Agent's Comment

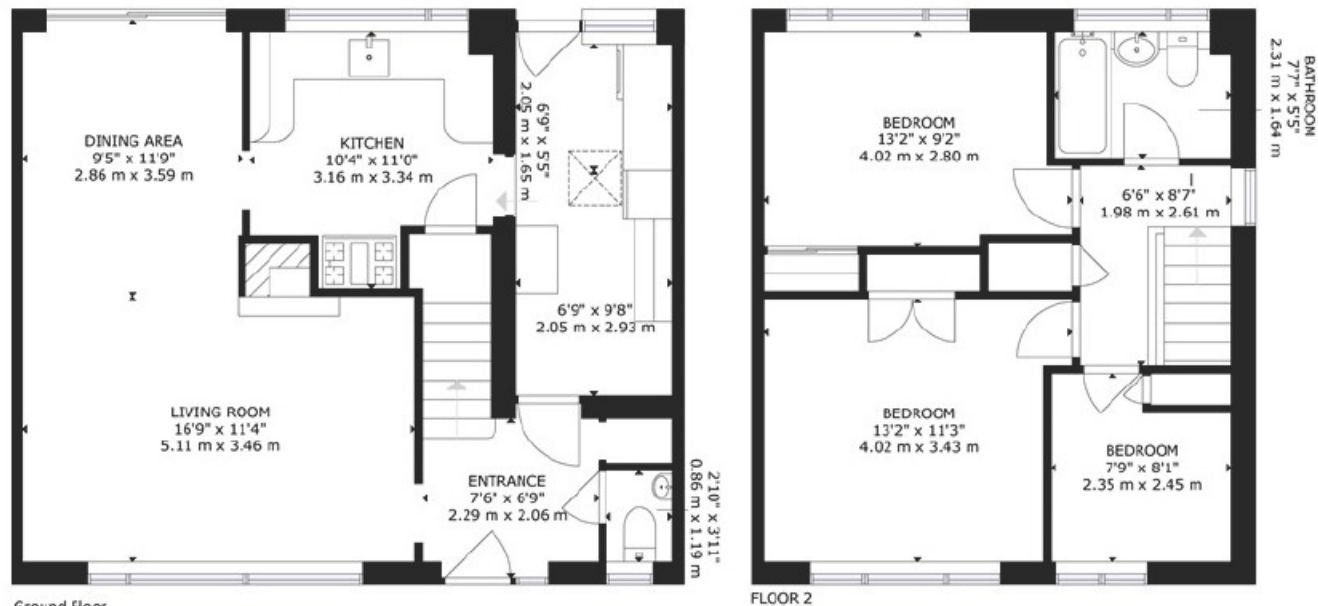
"Plenty of family living space alongside a garden safe for children and pets alike all close to schools and shops"

Farmers Close is a super development within walking distance of schools, shops and the town centre. Overlooking an open green to the front, this link-detached, light and airy family home sits on a large, corner plot. This family home enjoys great living space that includes a large window to the sitting/dining room which allows natural light to flow through the entire space. The kitchen offers a wide range of units, granite worktop and benefits from a larger utility room offering useful additional space to the kitchen. The cloakroom completes the ground floor accommodation. To the first floor there are three bedrooms, two with built-in wardrobes and bathroom. Additional attributes include a partially boarded loft and cavity wall insulation.

The rear garden affords a high degree of privacy and its set with ease of maintenance in mind with patio area, artificial grass and upgraded fencing, a gate leads to the garage at the rear. Overall, a super home with gas central heating to radiators, front lawn area and parking to the rear. An appointment to view is highly recommended.







GROSS INTERNAL AREA
FLOOR 1: 634 sq.ft, 59 m², FLOOR 2: 453 sq.ft, 42 m²
TOTAL: 1087 sq.ft, 101 m²
SIZES AND DIMENSIONS ARE APPROXIMATE, ACTUAL MAY VARY.

Breckon & Breckon
est. 1947

Witney

01993 776 775

10 Market Square

Witney, Oxfordshire

OX28 6BB

witney@breckon.co.uk

breckon.co.uk



Oxford city centre

Tel: 01865 244735 (sales)
Tel: 01865 201111 (letting)

Summertown

Tel: 01865 310300 (sales)
Tel: 01865 558999 (apartments)

Headington

Tel: 01865 750200 (sales)
Tel: 01865 763999 (letting)

Abingdon

Tel: 01235 550 550 (sales)
Tel: 01235 554 040 (letting)

Woodstock

Tel: 01993 811881 (sales)
Tel: 01993 810100 (letting)

Witney

Tel: 01993 776775 (sales)
Tel: 01865 201111 (letting)



Council Tax Band:

Band C - £2,023.57

Local Authority:

West Oxfordshire District Council

