

Keele 
UNIVERSITY
EST 1949

Innovation Centre

Expanding Staffordshire's
largest digital cluster

WELCOME TO KEELE UNIVERSITY



For more than 75 years, Keele has provided the blueprint for how universities can transform their local communities, with our founding principles to meet the demands of a new kind of society, economy and world resonating now more than ever.

Keele is a campus university with over 12,500 students, nestled in 600 acres of Staffordshire countryside located just an hour from Manchester and Birmingham. It's a big campus, but a small, innovative and inclusive community, providing space to think and plenty to do.

Fully integrated into Keele's campus is the University's Science and Innovation Park, one of the leading sites of its kind in the UK. The Park has increased significantly in recent years, adding a further four Innovation Centres, a UK charity HQ, a new research-led Veterinary School, a Courtyard by Marriott hotel, and a renewable energy generation park.

With our latest facility, Innovation Centre 7, now complete, there's never been a better time to become part of Keele University's Science and Innovation Park.



OUR LATEST FACILITY, INNOVATION CENTRE 7

A UK-LEADING SCIENCE AND INNOVATION PARK

Keele University's Science and Innovation Park is one of the leading developments of its kind in the UK. Fully integrated into Keele's 600 acre campus, the Park is home to over 1,000 employees across more than 50 diverse and thriving businesses.

Being located on the Park allows companies to base themselves in an environment that provides an innovative research culture combined with access to academic expertise, student internships and the University's specialist resources.

The Park hosts and supports a wide range of innovative businesses, from recent start-ups through to established multinationals, working across a range of different knowledge-intensive markets. Four winners of Queen's Awards for Enterprise currently call Keele home, with many more award-winners also on site.



Over 50 businesses on our
Science and Innovation Park

50

OUR INNOVATION CENTRES



HIGH-QUALITY WORKSPACE

The Science and Innovation Park has come a long way since its initial conception in the mid-1980s, providing high-quality accommodation and bespoke growth support to hundreds of businesses over the past four decades.

Today the Park boasts approximately 130,000 ft² of commercial mixed-use accommodation to suit businesses of all sizes. Spaces can be provided fully furnished and are equipped with the latest technology for ultimate digital integration and connectivity with access to formal meeting rooms, executive boardrooms, digital suites and think labs, reception services and close proximity car parking.

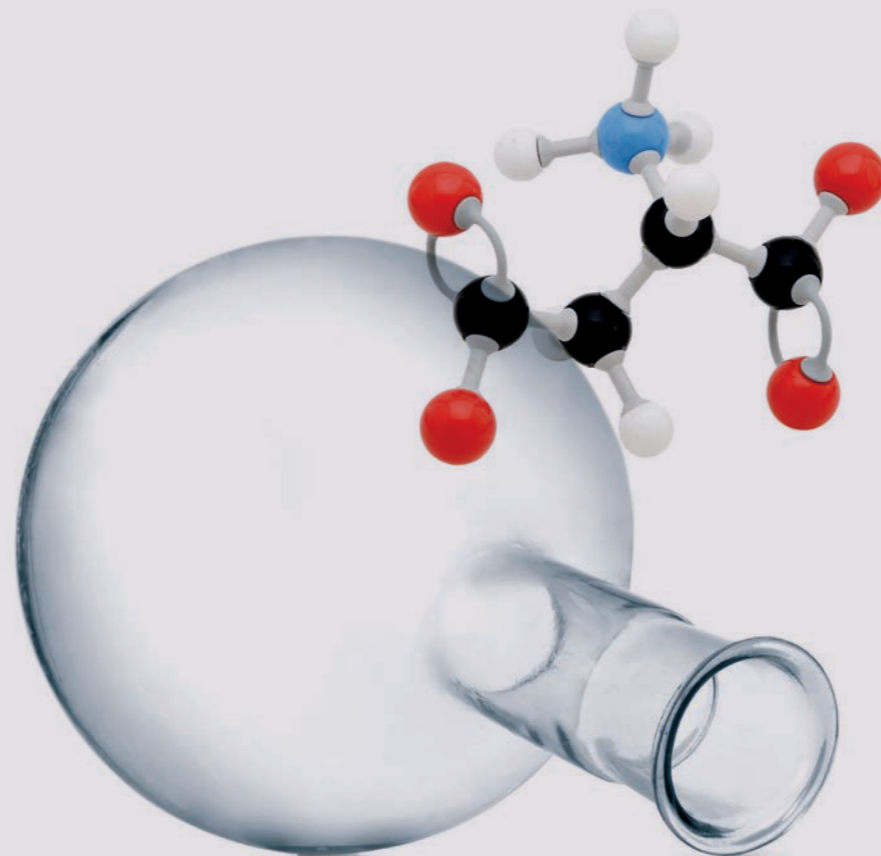
But that's not all. When you join Keele's Science and Innovation Park you will become part of a thriving community – a community of unique support, academics, researchers, organisations and students who are committed to stimulating business and innovation development.



WORLD-CLASS RESEARCH ON YOUR DOORSTEP

Keele University's research is changing the world for the better – and Innovation Centre 7 provides the perfect opportunity to place your business at the heart of the action.

80% of Keele's research has been classified as world-leading or internationally excellent*, and tenants are encouraged to take advantage of the cutting-edge research that is taking place on their doorstep by working with the University on mutually-beneficial collaborations to deliver the breakthroughs of tomorrow.

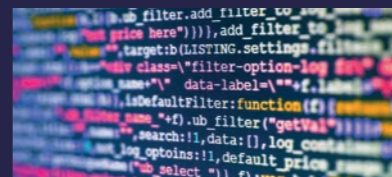


80%

OF OUR RESEARCH IS CLASSIFIED
AS WORLD-LEADING OR
INTERNATIONALLY EXCELLENT
RESEARCH EXCELLENCE FRAMEWORK, 2021

THE DIGITAL SOCIETY INSTITUTE

Keele's interdisciplinary institutes bring together expertise from across academia and industry to tackle some of society's most pressing challenges in the areas of global health, digital technologies, sustainable futures and social inclusion.



The Digital Society Institute has been established to drive business growth and innovation by helping organisations understand and adopt new digital technologies and advanced data analysis methods such as machine learning, as well as tackling the challenges associated with complexity and pace of change, irresponsible use of AI, issues surrounding ethics and privacy, and digital exclusion.

Businesses who locate themselves within Innovation Centre 7 will be working alongside the Digital Society Institute's community of academics, researchers and students, sharing the expertise that will give local organisations a vital competitive advantage.



THE WORKFORCE OF TOMORROW, AVAILABLE TODAY

Keele's students are among the most employable in the country, thanks to an extensive curriculum that combines taught knowledge with experiential learning, preparing students for the world of work and the challenges ahead.

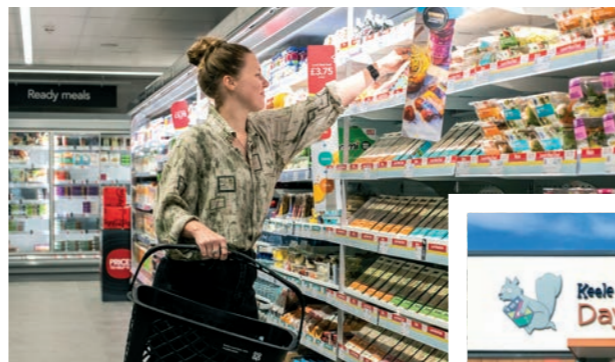
The majority of Keele's 12,500 students have the opportunity to undertake work placements or to collaborate with external industry partners on joint research projects. This mutually-beneficial arrangement enables businesses to access the latest thinking and boost their workforce, as well as the chance to get ahead of competitors in terms of recruitment.

Keele offers a range of Computing, Media and Technology-related programmes, with hundreds of talented students graduating each year. With more programmes set to be introduced over the next few years, the number of graduates with the skills that your business needs will only increase further.

By basing your business where the talent is, Keele can help you to recruit, retain and grow.

SOCIAL AND WELLBEING

As one of Britain's largest campus universities, Keele resembles a small town, with shops, eateries and sports facilities.



Our signature 19th century Keele Hall is commonly used for conferences, events and activities and provides a spectacular venue for weddings.

With our beautiful 600-acre campus on your doorstep, you and your employees can take advantage of:



Sports and health facilities, including gym and physiotherapy clinics



Courtyard by Marriott hotel, plus event and conferencing facilities



Co-Op store, Well Pharmacy & Greggs bakery in centre of campus



On-site nursery, rated 'Outstanding' by Ofsted



Cafes, bars & restaurants



On-site veterinary clinic & pet creche (coming soon)



Regular social, arts and cultural events



Woodland and lakeside walks



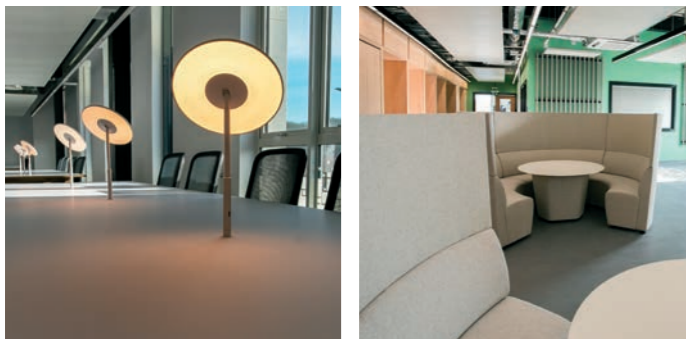
Unisex hair salon

INTRODUCING INNOVATION CENTRE 7

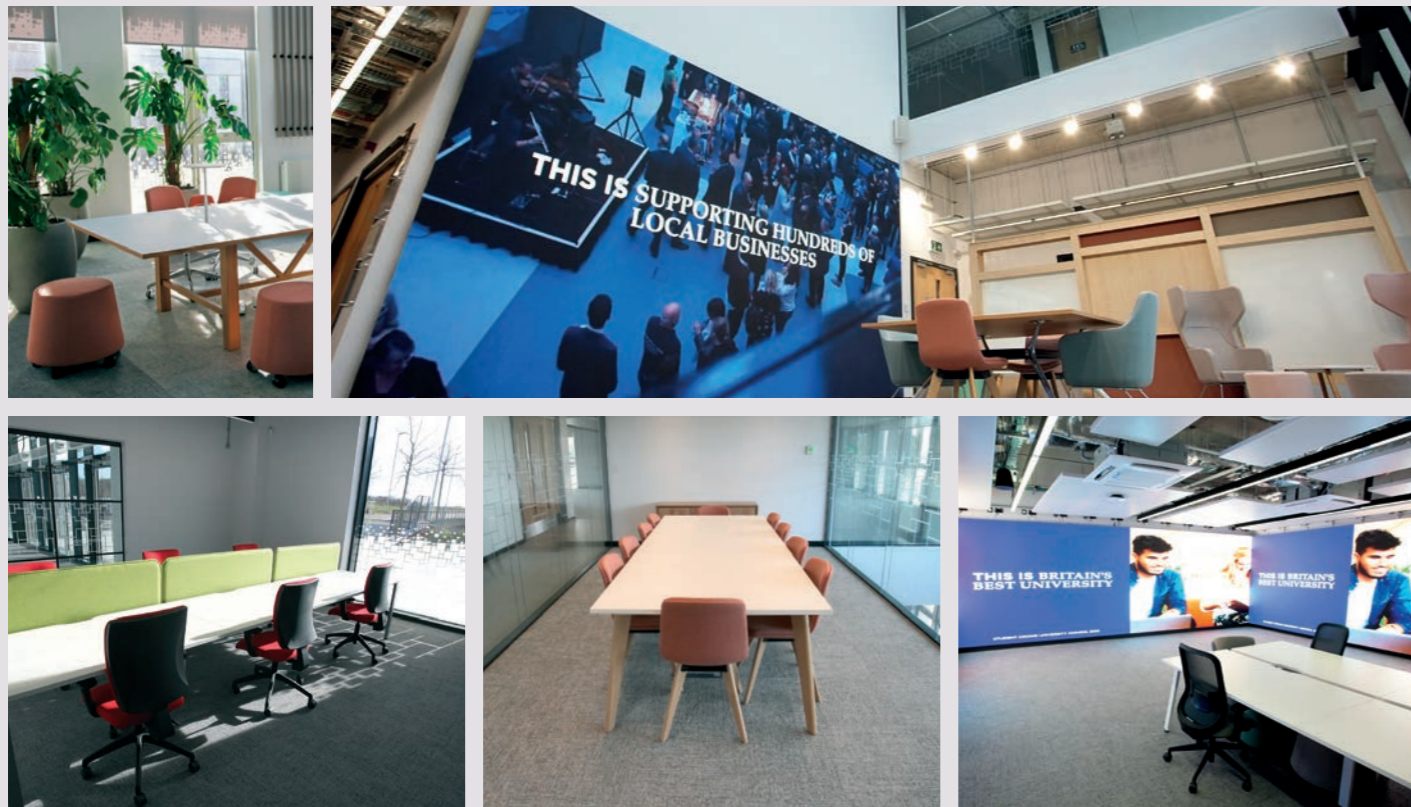
Innovation Centre 7, located on Keele University's Science and Innovation Park, is a brand new facility focused on harnessing and developing the digital technology that will place the region at the heart of the UK's digital revolution.

The building brings together small and medium sized digital enterprises, experienced academics and state-of-the-art digital infrastructure all under one roof, providing tenants with unique access to the facilities, industry links and burgeoning student talent pool of future employees that will lead to the competitive advantages needed to innovate, expand and succeed in emerging digital markets.

With more than 10,000 ft² of modern workspace available and facilities kitted out with the latest technologies, the building provides a collaborative, competitive and dynamic environment which enables digital businesses to further innovate and grow.



CUTTING-EDGE FACILITIES



Innovation Centre 7 has been developed with the future as the focus. Tenants will be able to access some of the latest technologies that will further their business ventures, with facilities such as a data visualisation suite, the augmented reality 'Cave', and a high-performance computing cluster.*



The building has received the highest energy-efficiency rating possible, has a number of electric vehicle charging points, and is powered by Keele's on-site low carbon energy generation park, keeping environmental impact low.

FEATURES INCLUDE:



Data visualisation suite



Augmented Reality & Virtual Reality suite



Digital wall



Kitchenette areas



Formal and informal meeting & collaboration spaces



EV charging points



Bicycle storage



Digital reception service

The Wolfson*
Foundation

*The high-performance computing cluster has been made possible thanks to a grant from the Wolfson Foundation.

MEETING AND SOCIAL SPACES



Winter Garden meeting room



Kitchen, social and meeting spaces



MODERN WORKSPACE TO ENABLE GROWTH

Workspace in Innovation Centre 7 is available exclusively for businesses involved within Industry 4.0 – the integration of intelligent digital technologies into manufacturing and industrial processes.

FIRST FLOOR

Office	Key	Size	Minimum term commitment	Recommended seating (all fully furnished)	Additional features
1.003	A	84 m ² 904 ft ²	3 years	16 – 20	<ul style="list-style-type: none"> • Dedicated meeting room • Free access to communal meeting rooms
1.012	B	396 m ² 4,273 ft ²	5 years	60 – 70	<ul style="list-style-type: none"> • Flexible space • Dedicated meeting room • Dedicated toilet block • Free access to communal meeting rooms

SECOND FLOOR

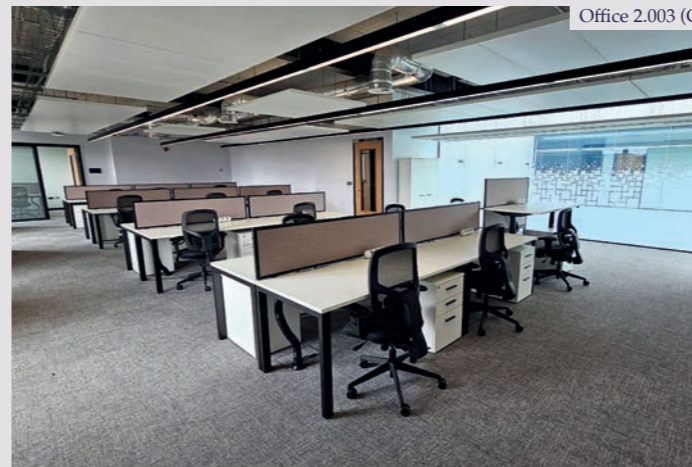
Office	Key	Size	Minimum term commitment	Recommended seating (all fully furnished)	Additional features
2.003	C	133 m ² 1,432 ft ²	3 years	34 – 38	<ul style="list-style-type: none"> • Dedicated meeting room / executive office • Free access to communal meeting rooms
2.012	D	49 m ² 528 ft ²	3 years	6 – 8	<ul style="list-style-type: none"> • Dedicated meeting room / executive office • Free access to communal meeting rooms
2.014	E	74 m ² 797 ft ²	3 years	16	<ul style="list-style-type: none"> • Free access to communal meeting rooms
2.026	F	293 m ² 3,153 ft ²	5 years	48	<ul style="list-style-type: none"> • Dedicated executive boardroom with AV • Dedicated toilet block • Free access to communal meeting rooms



Office 1.012 (B)



Office 2.026 (F)

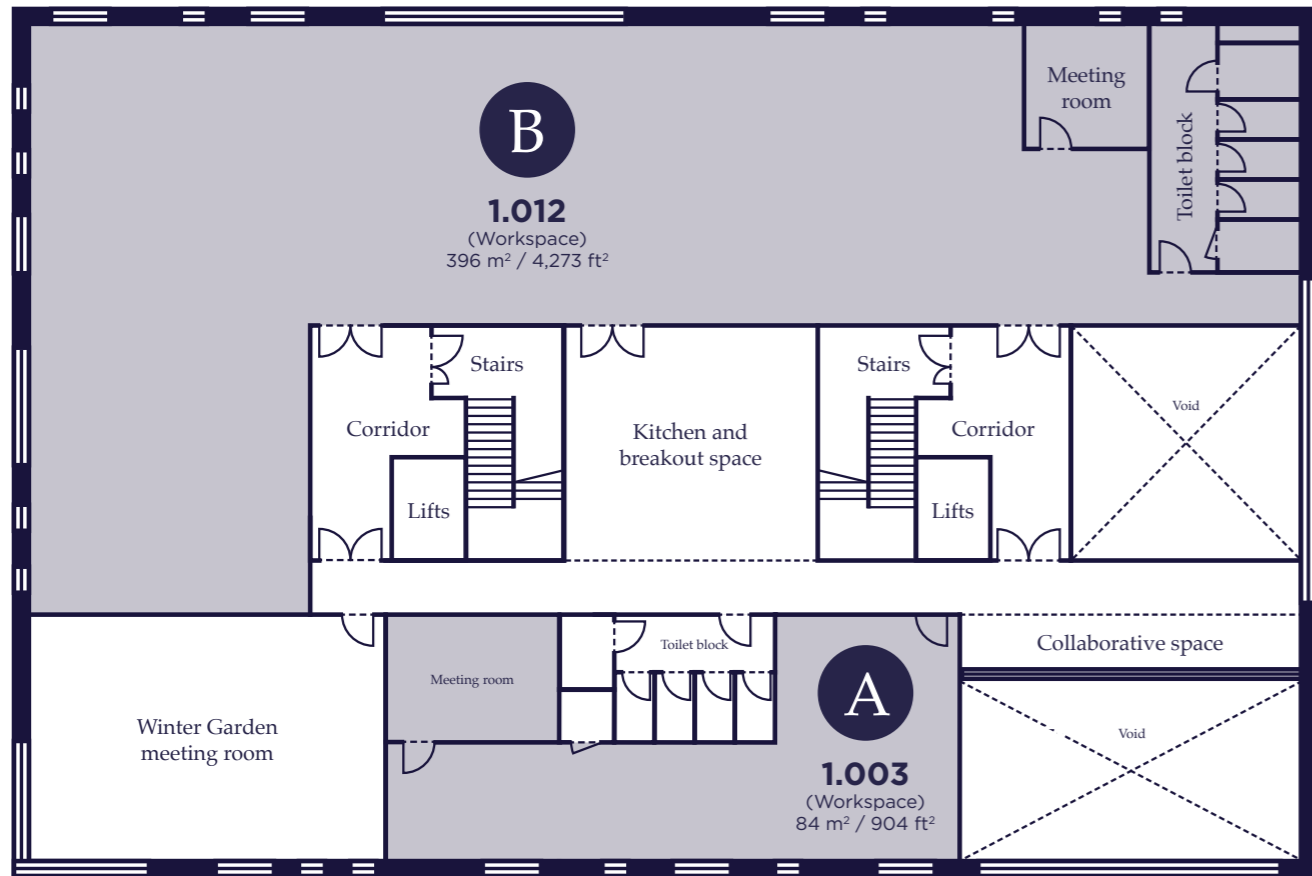


Office 2.003 (C)

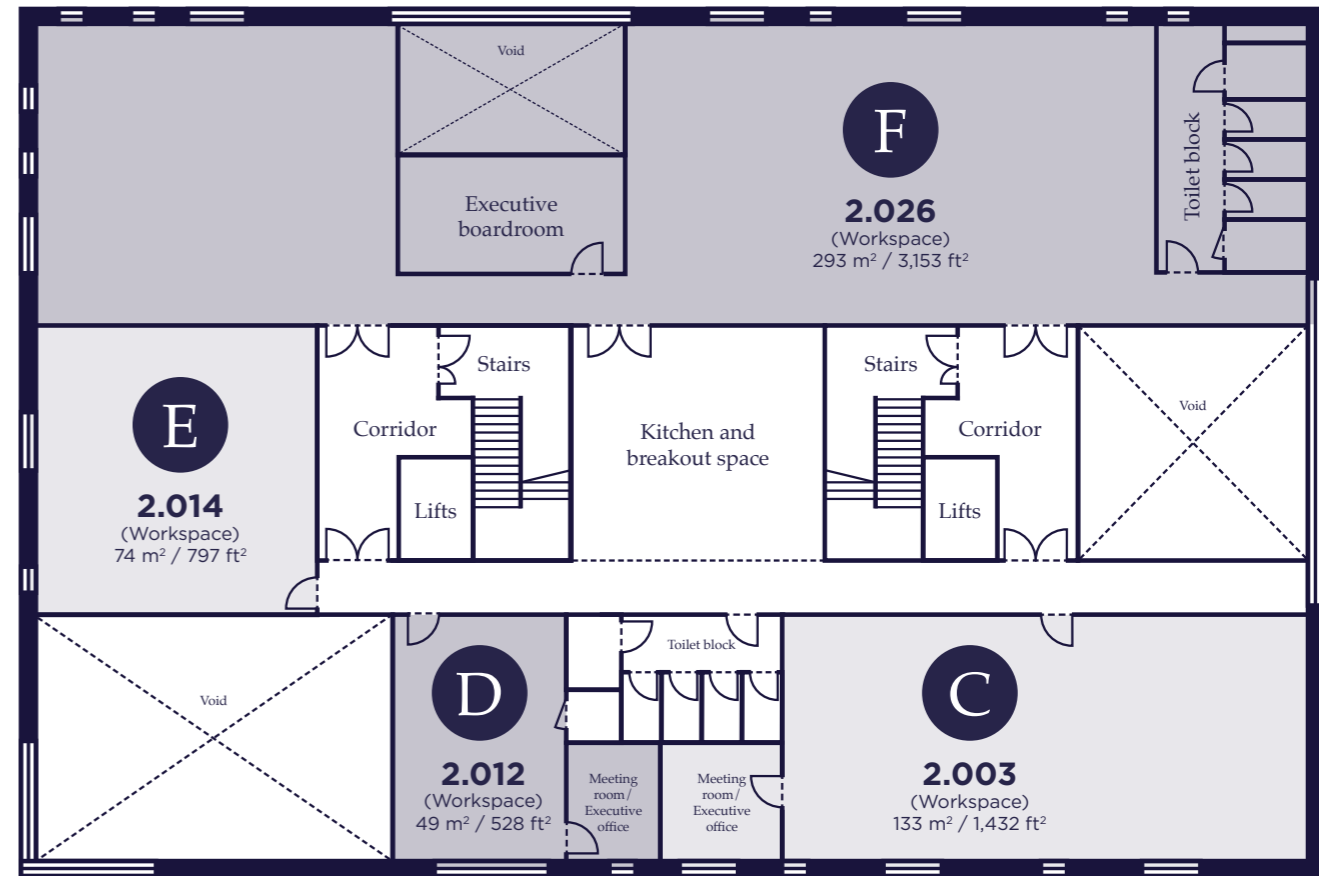


Office 2.012 (D)

FIRST FLOOR



SECOND FLOOR





INDUSTRY-LEADING CONNECTIVITY

Innovation Centre 7 is the culmination of a £15million investment from Research England, the European Regional Development Fund and Getting Building Fund to further cement Keele University's position as the largest digital cluster in Staffordshire.

Through the Keele Gateway, one of the UK's leading local growth initiatives, the University has delivered over 2,000 support interactions with businesses from across the region since 2016, including hundreds of bespoke project collaborations to advance organisations' use of digital technologies.

Thanks to Keele's impressive industry networks, the University is able to provide a broker service to its Science and Innovation Park tenants, linking local companies with leading organisations across the world to help foster partnerships that will elevate businesses to the next level.

£15M

INVESTMENT FROM RESEARCH ENGLAND, THE EUROPEAN REGIONAL DEVELOPMENT FUND AND GETTING BUILDING FUND



European Union
European Regional Development Fund

Stoke-on-Trent & Staffordshire
Enterprise Partnership



Research England

LOCAL CONNECTIONS, GLOBAL POSSIBILITIES

Despite being nestled in a green, picturesque and tranquil environment near Newcastle-under-Lyme in North Staffordshire, Keele's Science and Innovation Park is actually only 10 minutes from the UK's longest motorway, the M6, allowing quick and easy access to all areas of the country.

Thanks to Keele's central location, both Manchester and Birmingham can be accessed by car within approximately 60 minutes, while two major train hubs – Crewe and Stoke-on-Trent – are located less than 20 minutes away, with trains to London taking as little as 90 minutes.

For those looking to travel further afield, four international airports are available within about an hour's drive time, putting access to the world on your doorstep. Not bad for a leafy campus in the Staffordshire countryside!



EXCELLENT CONNECTIONS



Train journeys from Stoke-on-Trent take from around:

90
MINUTES
to London

50
MINUTES
to Birmingham

40
MINUTES
to Manchester

SECTOR LEADERS IN SUSTAINABILITY

Keele is a university that cares about the world and our place in it.

We are a university that...

...has *declared a climate emergency*

...has pledged to be *carbon neutral by 2030*

...has *divested* from all *fossil fuels*

...has *installed* 12,500 solar panels and two wind turbines on campus, *generating 50%* of our campus electricity from renewable sources

...is leading the world in energy research and green technology

Innovation Centre 7 has received the highest energy-efficiency rating possible (BREEAM Excellent), has ten electric vehicle charging points, and is powered by Keele's on-site low carbon energy generation park.



Global Sustainability Institution of the Year

INTERNATIONAL GREEN
GOWN AWARDS, 2021

OUR CAMPUS

1. Alliance Medical
 2. Caudwell International Children's Centre
 3. Charles River (Stephenson Building)
 4. Courtyard by Marriott hotel
 5. IC1
 6. IC2
 7. IC3
 8. IC4
 9. IC5
 10. IC6
 11. Veterinary School
 12. IC7
 13. Keele Hall
 14. Nova Centre
 15. Nursery
 16. School of Medicine
 17. Shops and Post Office
 18. Sports Centre
- ★ Development plot for future facilities



Join us and be part of the Midlands' newest digital workspace and collaboration hub.

For a confidential conversation or to request an application, please contact one of our property agents:

Alex Tross at Carter Jonas
alex.tross@carterjonas.co.uk

07789 027 191
0121 758 8202

Mike Burr at Harris Lamb
mike.burr@harrislamb.co.uk

07827 342 460
01782 272 555

keele.ac.uk/ic7



European Union
European Regional
Development Fund

**Stoke-on-Trent
& Staffordshire**
Enterprise Partnership



**Research
England**

Innovation Centre 7 has been part-funded through a suite of funders including the European Regional Development Fund (ERDF) as part of the England 2014-2020 European Structural and Investment Funds (ESIF) Growth Programme, the Research England Development Fund, and UK Government funding through the Getting Building Fund.