



## Chieveley Drive, Tunbridge Wells



### £2,500 PCM

- Popular location off Forest Road
- Spacious living room
- Garage and driveway
- Enclosed rear garden
- Appliances included
- Downstairs cloakroom
- EPC rating D

Because property is personal with...

# BELVOIR!



Spacious 3-bedroom house in popular location with enclosed rear garden and garage.

Located off Forest Road this semi-detached house has a large living room with feature fireplace and a kitchen-diner overlooking the rear garden. The stylish kitchen is fully fitted with a range of wall and base units and includes oven/hob, Bosch fridge-freezer, and a dishwasher. There is also ample room for your dining room table so you can eat with a view over the pretty garden.

From the kitchen there is a door giving access to the garden, a downstairs cloakroom/utility, including a washer/dryer, and the single garage.

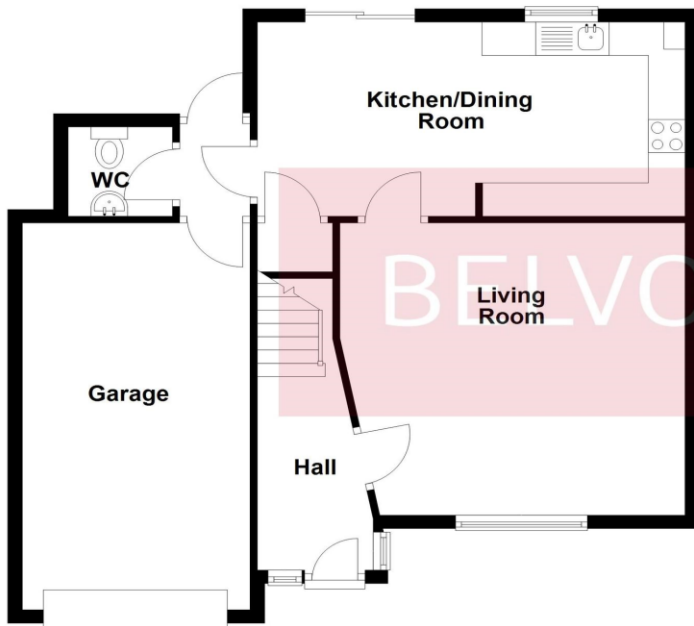
Upstairs there are three bedrooms, two doubles which have built in cupboards providing useful storage, a further single plus a family bathroom with a modern suite including shower.

To the front there is small garden, a block-paved driveway and a single garage.

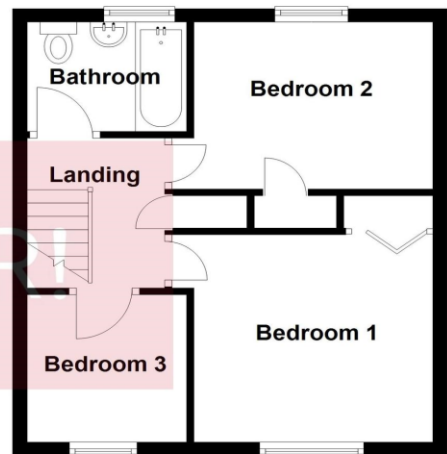
The Hawkenbury area is popular with families and St Peters primary school (OFSTED outstanding) is within walking distance. Also, the nearby recreation ground includes sports courts and a children's play area.



**Ground Floor**

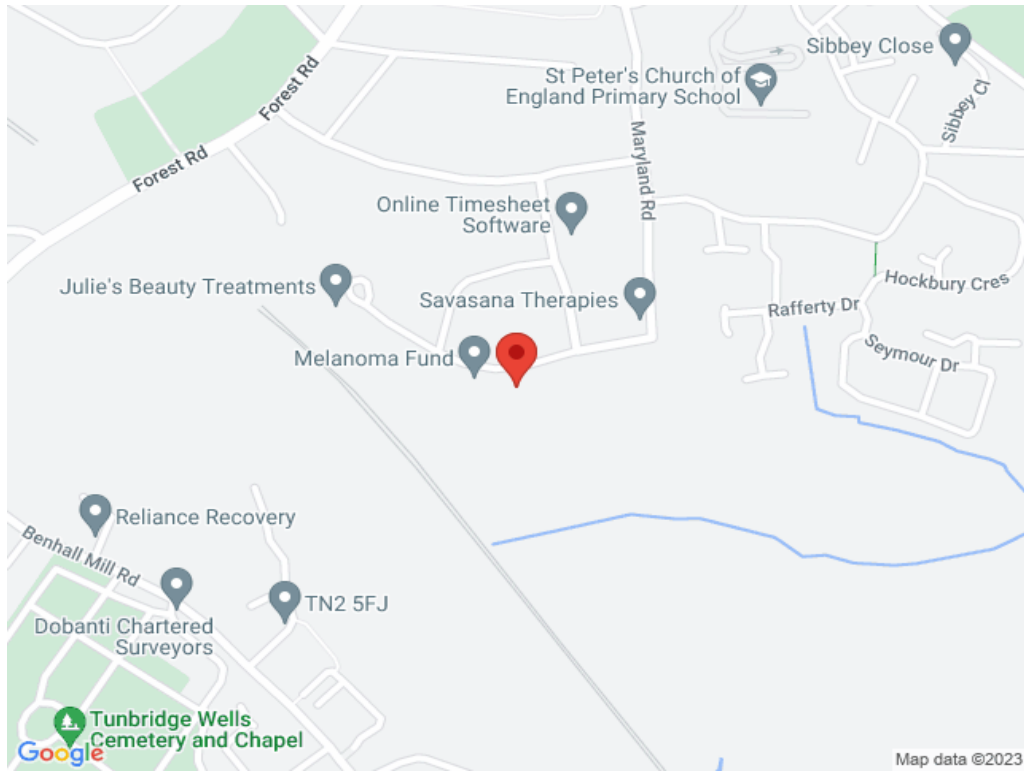


**First Floor**



**Total area: approx. 101.8 sq. metres (1095.9 sq. feet)**

This floor plan is for illustrative purposes only and is not to scale. Where measurements are shown they are approximate and should not be relied on. No liability is accepted in respect to consequential loss arising from the use of this plan.  
Plan produced using PlanUp.



# BELVOIR!

Belvoir Tunbridge Wells

01892 615 333

tunbridgewells@belvoir.co.uk