



## 217 Ilkeston Road

Lenton, Nottingham, NG7 3FX

### £956 Per Month

Introducing DOJO HOUSE - 41 unit boutique studio accommodation for NTU and UoN students in Nottingham! Offering a range of stylish studios of various size and price, amongst large, quirky communal spaces.

Dojo House contains a mix of 41 premium sky view, large scenic view, and luxury corner suite studios set over four floors accessed via the lift or stairs and cater for all budgets. Each studio is of the highest interior designed specification, featuring an integrated kitchen and separate ensuite bathroom to offer your own private space. The kitchen comes equipped with oven, hob, and fridge/freezer.

All rooms have their own sophisticated ensuite bathrooms containing a huge shower, toilet, towel heater, and sink complete with mirror. Coming out the bathroom, there is a vast array of storage and high-spec furniture in the bedroom and living area.

Every studio includes its own double bed with under bed storage, bedside table, desk, chair, chest of drawers, and wardrobe. Rooms all even come with their own wall-mounted flat screen TV with high speed broadband! All bills are included in the weekly rent. Laundry facilities are also available.

Dojo House offers the height of supreme student living with an incredible array of communal space and on-site facilities to set itself apart from any other student block. There's a fitness suite, bike storage, games room, laundry and large communal private courtyard. The games room is equipped with karaoke for you to belt out a song or two with friends, or just wind back and watch a film on the large 70 inch TV.

- SKY VIEW STUDIO APARTMENT
- HIGH-END FINISH
- £220PW INCLUDING BILLS!
- £500 CASHBACK \*LIMITED TIME OFFER\*
- FREE FURNITURE UPGRADE VALUED AT £1250 \*LIMITED TIME OFFER\*
- FITNESS SUITE
- LARGE COMMUNAL PRIVATE COURTYARD
- GAMES ROOM
- EXCELLENT LOCATION FOR NTU AND UON
- CLOSE TO CITY CENTRE, 6 MIN WALK TO NEAREST LIDL

### Viewing

Please contact our Top365 Lettings Office Office on 0115 845 0708

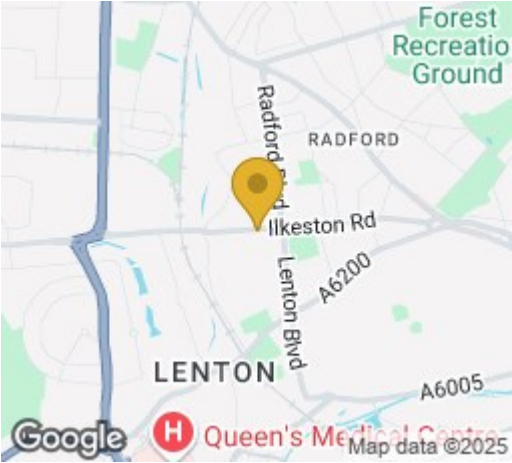
if you wish to arrange a viewing appointment for this property or require further information



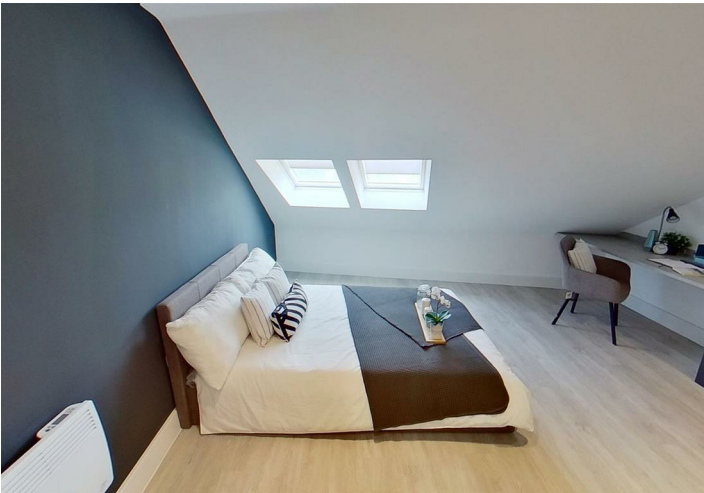
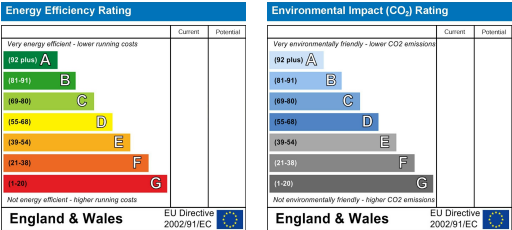
Floor Plan



Area Map



Energy Efficiency Graph



These particulars, whilst believed to be accurate are set out as a general outline only for guidance and do not constitute any part of an offer or contract. Intending purchasers should not rely on them as statements of representation of fact, but must satisfy themselves by inspection or otherwise as to their accuracy. No person in this firms employment has the authority to make or give any representation or warranty in respect of the property.