



Annesley Grove

Arboretum, Nottingham, NG1 4GU

£1,499 Per Month

£115 pppw excl bills

Bills Package Available

** AVAILABLE ACADEMIC YEAR 2025/26 **

3 Bedrooms

1 Bathroom

Open Plan Kitchen and Living area

Communal Garden

Great location for students attending both universities

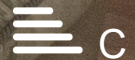
Close walk to City Centre

Viewing

Please contact our Top365 Lettings Office Office on 0115 845 0708

if you wish to arrange a viewing appointment for this property or require further information

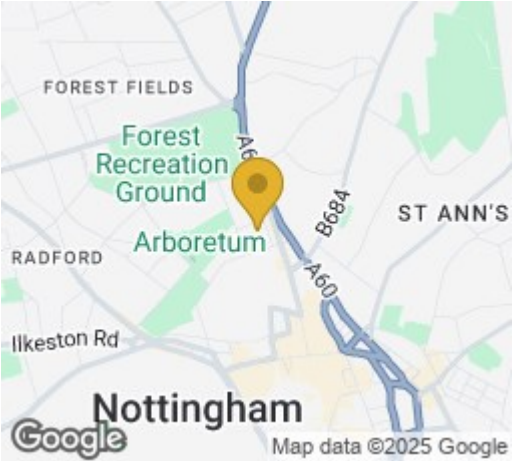
- £115pppw excl bills
- Bills Package Available
- ** AVAILABLE ACADEMIC YEAR 2025/26 **
- 3 Bedrooms
- 1 Bathroom
- Open Plan Kitchen and Living area
- Large Communal Garden
- Great location for students attending both universities
- Close walk to City Centre
- 5 Minutes from Trent University



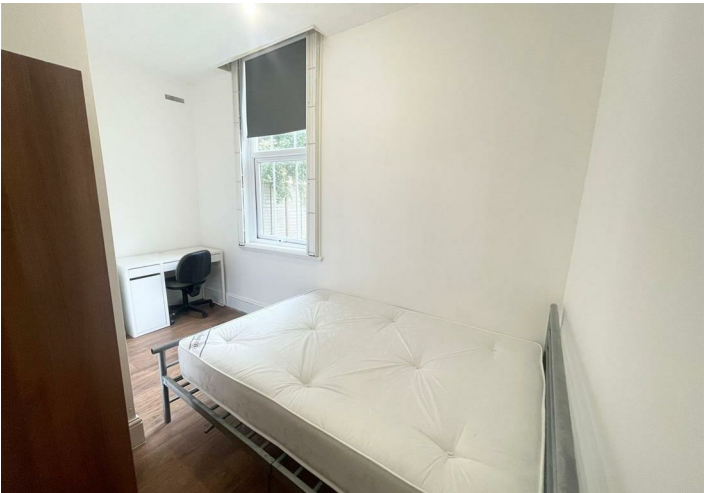
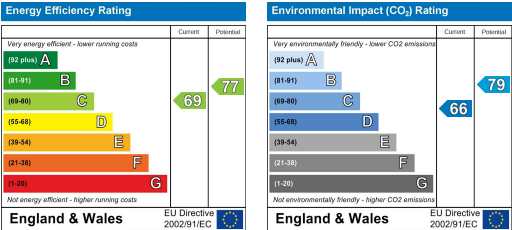
Floor Plan



Area Map



Energy Efficiency Graph



These particulars, whilst believed to be accurate are set out as a general outline only for guidance and do not constitute any part of an offer or contract. Intending purchasers should not rely on them as statements of representation of fact, but must satisfy themselves by inspection or otherwise as to their accuracy. No person in this firms employment has the authority to make or give any representation or warranty in respect of the property.