

Annesley Grove

Arboretum, Nottingham, NG1 4GU

£1,890 Per Month

£145 pppw BILLS INCLUDED

+ 2 LARGE PAPA JOHNS PIZZAS EVERY WEEK (T&C's apply)

** AVAILABLE ACADEMIC YEAR 2025/26 **

3 Bedrooms

1 Bathroom

Open Plan Kitchen and Living area

Communal Garden

Great location for students attending both universities

Close walk to City Centre

Viewing

Please contact our Top365 Lettings Office Office on 0115 845 0708

if you wish to arrange a viewing appointment for this property or require further information

£145 pppw BILLS INCLUDED

+ 2 LARGE PAPA JOHNS PIZZAS EVERY WEEK (T&C's apply)

** AVAILABLE ACADEMIC YEAR 2025/26 **

3 Bedrooms

1 Bathroom

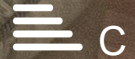
Open Plan Kitchen and Living area

Large Communal Garden

Great location for students attending both universities

Close walk to City Centre

5 Minutes from Trent University



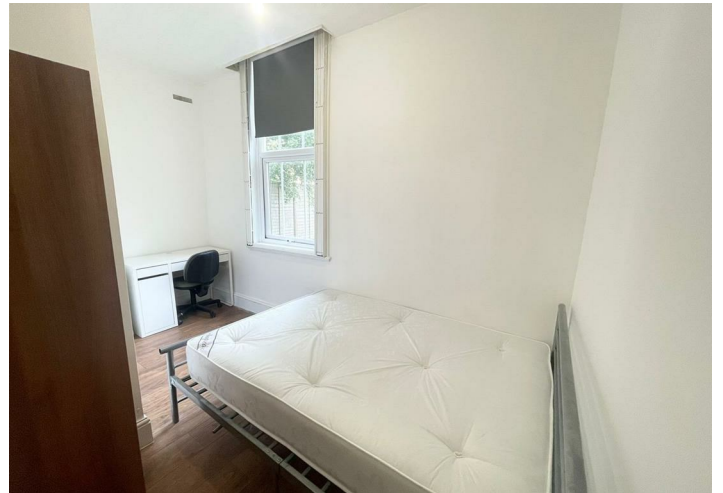
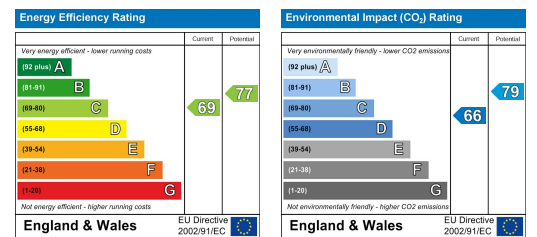
Floor Plan



Area Map



Energy Efficiency Graph



These particulars, whilst believed to be accurate are set out as a general outline only for guidance and do not constitute any part of an offer or contract. Intending purchasers should not rely on them as statements of representation of fact, but must satisfy themselves by inspection or otherwise as to their accuracy. No person in this firm's employment has the authority to make or give any representation or warranty in respect of the property.

74 Derby Road | Nottingham | NG1 5FD

T: 0115 845 0708 M: 07758 520 126 E: enquiries@top365.co.uk W: www.top365.co.uk