

## Rothesay Avenue

, Nottingham, NG7 1PW

£550 Per Month

STUDENT HOUSESHARE AVAILABLE FROM 2ND AUGUST

£550 PCM ALL INCLUSIVE

6 Bedroom Houseshare

2 Bathrooms

Garden

On Street Permit Parking Available

Available from 2nd August 2024

Great Location in heart of Lenton

Inbetween both Trent and Uni of Nottingham

Close commute to QMC and walking distance of City Centre

### Viewing

Please contact our Top365 Lettings Office Office on 0115 845 0708 if you wish to arrange a viewing appointment for this property or require further information

STUDENT HOUSESHARE AVAILABLE FROM 2ND AUGUST

£550 PCM ALL-INCLUSIVE

6 Bedroom Houseshare

2 Bathrooms

Garden

On Street Permit Parking Available

Available from 2nd August 2024

Great Location in heart of Lenton

Inbetween both Trent and Uni of Nottingham



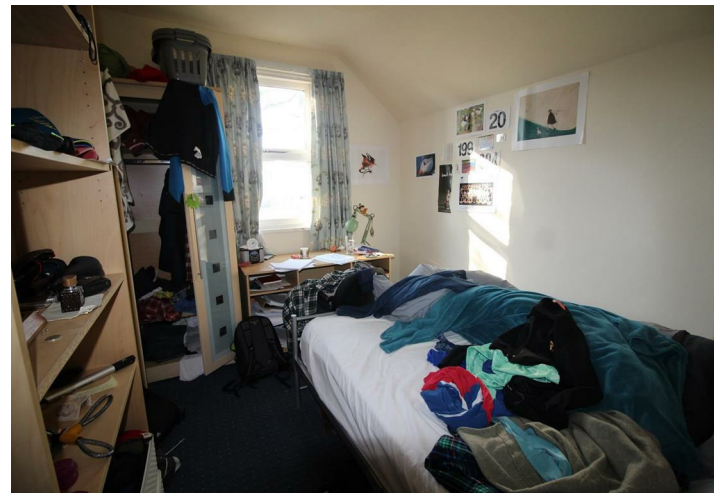
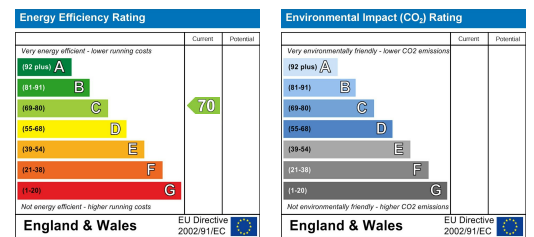
## Floor Plan



## Area Map



## Energy Efficiency Graph



These particulars, whilst believed to be accurate are set out as a general outline only for guidance and do not constitute any part of an offer or contract. Intending purchasers should not rely on them as statements of representation of fact, but must satisfy themselves by inspection or otherwise as to their accuracy. No person in this firm's employment has the authority to make or give any representation or warranty in respect of the property.

76 Derby Road | Nottingham | NG1 5FD

T: 0115 845 0708 M: 07758 520 126 E: enquiries@top365.co.uk W: www.top365.co.uk