

## Yeomans Court, clumber road west

The Park, Nottingham, NG7 1EU

£2,086 Per Week

STUDENT HOUSESHARE AVAILABLE FROM 2ND AUGUST

£120 pppw excl bills

4 Spacious Bedrooms

1 Bathroom

Garden

On Street Parking Available

Available from 2nd August

Great Location in The Park

Inbetween both Trent and Uni of Nottingham

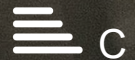
Close commute to QMC and walking distance of City Centre

- SPACIOUS 4 BEDROOM HOUSE
- OPEN PLAN KITCHEN AND LIVING ROOM
- FULLY FURNISHED
- GARDEN
- PARKING AVAILABLE
- £120 PPPW EXCL BILLS
- PERFECT LOCATION FOR BOTH NOTTINGHAM AND TRENT UNI
- CLOSE COMMUTE TO QMC
- **\*\*FIXED BILLS INCLUSIVE PACKAGE AVAILABLE - PLEASE ENQUIRE\*\***

### Viewing

Please contact our Top365 Lettings Office Office on 0115 845 0708

if you wish to arrange a viewing appointment for this property or require further information



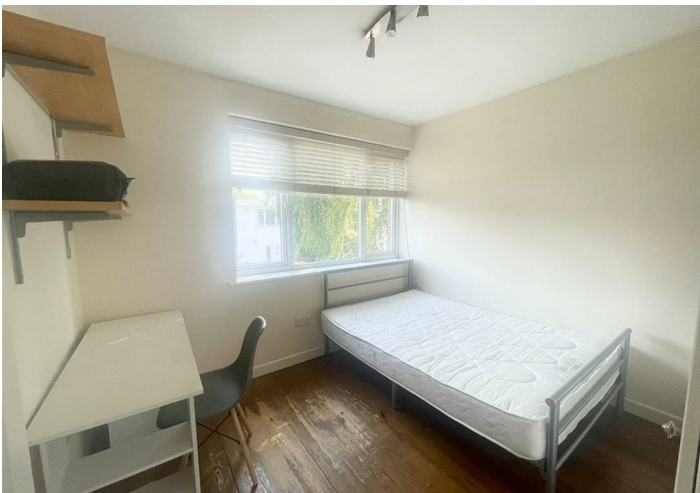
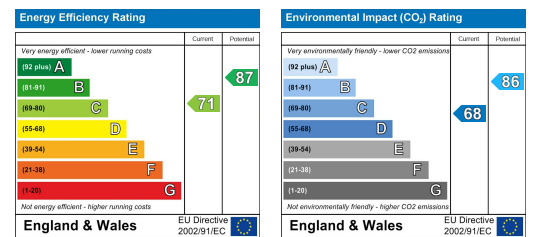
## Floor Plan



## Area Map



## Energy Efficiency Graph



These particulars, whilst believed to be accurate are set out as a general outline only for guidance and do not constitute any part of an offer or contract. Intending purchasers should not rely on them as statements of representation of fact, but must satisfy themselves by inspection or otherwise as to their accuracy. No person in this firm's employment has the authority to make or give any representation or warranty in respect of the property.

76 Derby Road | Nottingham | NG1 5FD

T: 0115 845 0708 M: 07758 520 126 E: enquiries@top365.co.uk W: www.top365.co.uk