

## Wellington Terrace

Arundel Street, Nottingham, NG7 1NH

£695 Per Month

HOUSE SHARE AVAILABLE FROM 7TH SEPTEMBER

\*\*AVAILABLE 2024/25 ACADEMIC YEAR\*\*

IDEAL FOR STUDENTS AT BOTH UNIVERSITIES.

6 Bedroom House Share

4 Bathrooms

3 Rooms available

Parking Available

£695 PCM Bills included

### Viewing

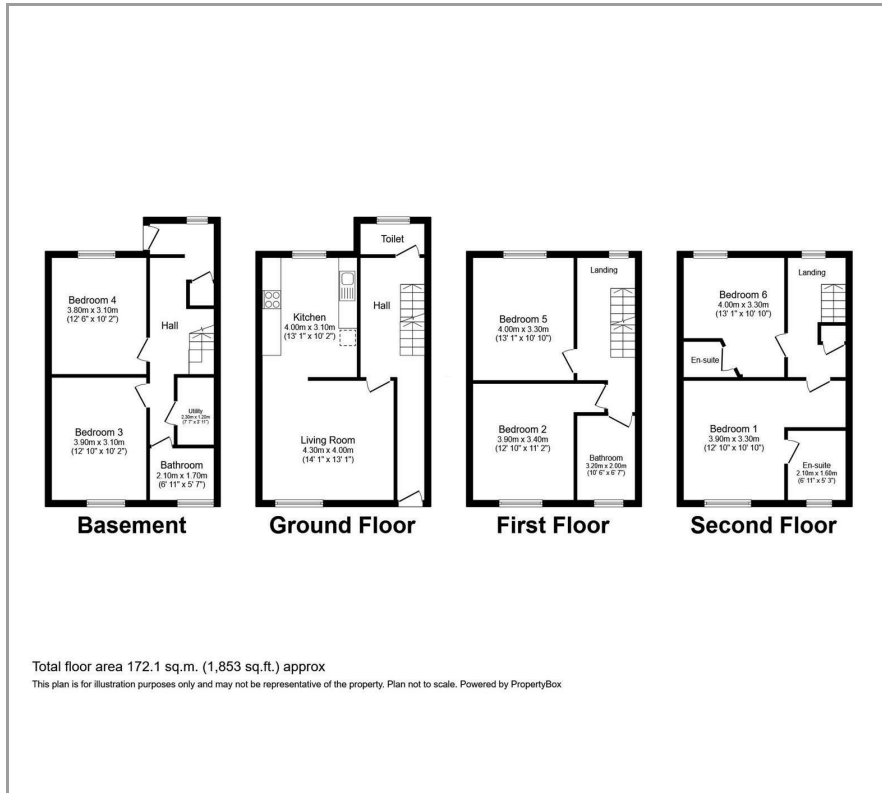
Please contact our Top365 Lettings Office Office on 0115 845 0708

if you wish to arrange a viewing appointment for this property or require further information

- 6 Bedroom House
- 3 Rooms available
- modern kitchen
- separate lounge
- 4 bathrooms
- close to both universities
- Cleaner included with the rent



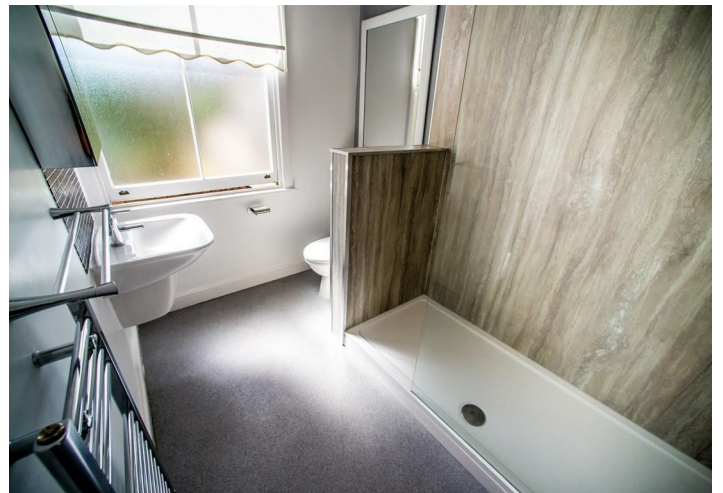
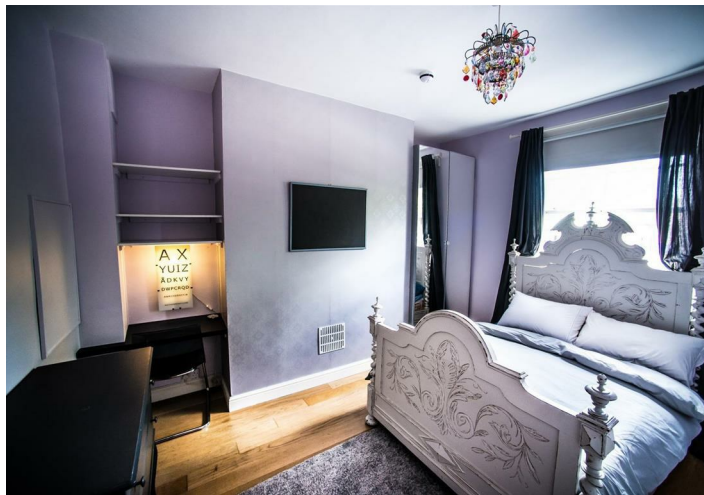
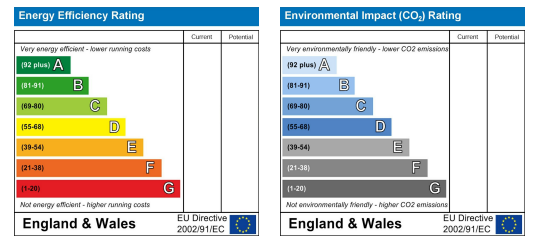
# Floor Plan



# Area Map



# Energy Efficiency Graph



These particulars, whilst believed to be accurate are set out as a general outline only for guidance and do not constitute any part of an offer or contract. Intending purchasers should not rely on them as statements of representation of fact, but must satisfy themselves by inspection or otherwise as to their accuracy. No person in this firm's employment has the authority to make or give any representation or warranty in respect of the property.

76 Derby Road | Nottingham | NG1 5FD

T: 0115 845 0708 M: 07758 520 126 E: enquiries@top365.co.uk W: www.top365.co.uk