



TO LET
£2,300 Per Calendar Month
| PARK VIEW | CARDIFF | CF10 3AL



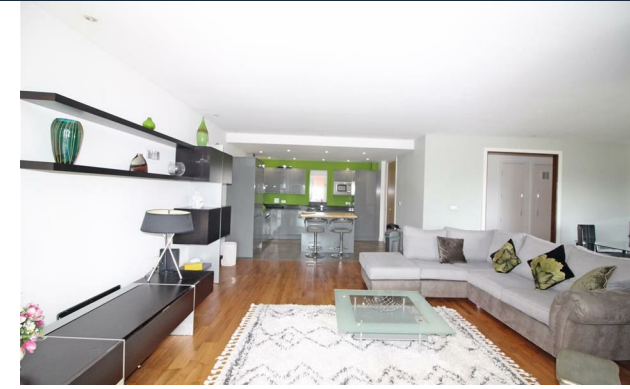
THE PROPERTY

****SUPERB PENTHOUSE APARTMENT**** This penthouse apartment sits atop of the Park Plaza Hotel. This spacious, tastefully decorated and furnished apartment benefits from secure under croft parking, concierge service and is available immediately.

Hern & Crabtree are delighted to present this two bedroom penthouse apartment located in the prestigious Park View development in the City Centre. This property is furnished to a high standard and comprises large open plan lounge and dining area with balcony and views over the city. There is a modern kitchen completed with integrated dishwasher and fridge freezer, WC, two double ensuite bedrooms - one with balcony, and a further dressing room / additional single bedroom. Ample storage throughout. Available at £2300pcm. No Pets. EPC Rating E. Council Band H.

This property also comes with access to a spacious and inclusive gym, pool area and a handful of other amenities at an extra cost. Please request more details on this at time of viewing.

The property is accessed from Greyfriars road into the concierge area with lift access to the top floor.



 **2**
 **2**
 **1**
 **47**



Energy Efficiency Rating		Current	Potential
Very energy efficient - lower running costs			
(92 plus) A			
(81-91) B			
(69-80) C			
(55-68) D			72
(39-54) E		47	
(21-38) F			
(1-20) G			
Not energy efficient - higher running costs			
England & Wales		EU Directive 2002/91/EC	



87 Pontcanna Street, Pontcanna, Cardiff, Cardiff, CF11 9HS
 Tel: 02920 780230 Email: lettings@hern-crabtree.co.uk

<https://www.hern-crabtree.co.uk>



IMPORTANT: we would like to inform prospective purchasers that these sales particulars have been prepared as a general guide only. A detailed survey has not been carried out, nor the services, appliances and fittings tested. Room sizes should not be relied upon for furnishing purposes and are approximate. If floor plans are included, they are for guidance only and illustration purposes only and may not be to scale. If there are any important matters likely to affect your decision to buy, please contact us before viewing the property.