



Naylors

ESTATE AGENTS CHARTERED SURVEYORS



5 Mews Cottages Main Street

Great Oxendon, Market Harborough, LE16 8NS

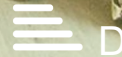
£1,000 Per Calendar Month

An opportunity to rent this mid-terrace, two bedroom character property in the village of Great Oxendon.

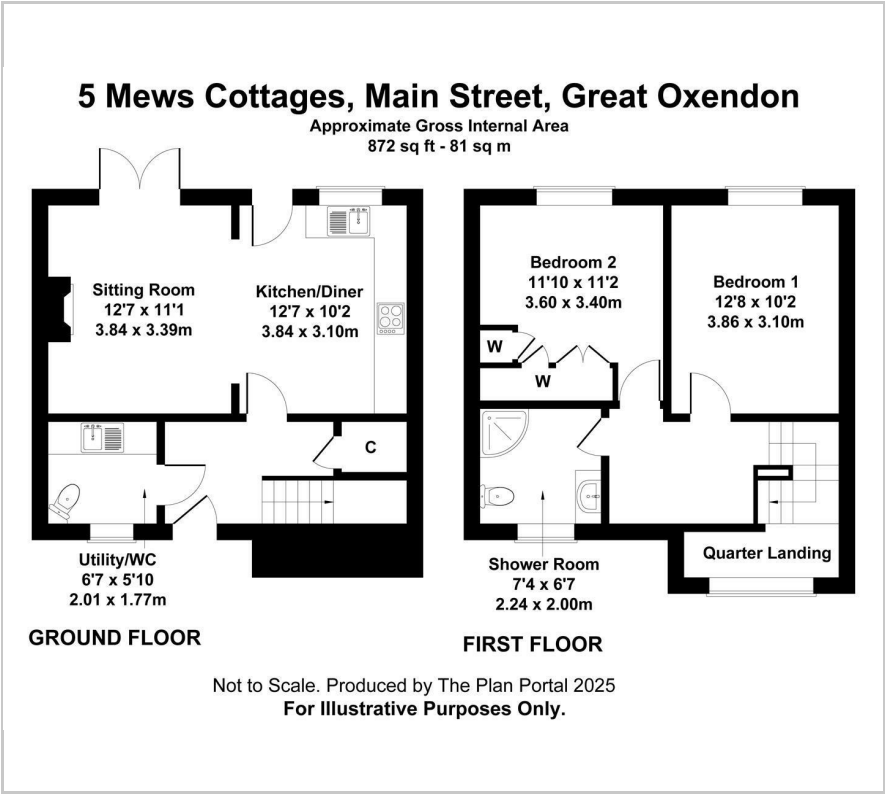
The property briefly comprises: Entrance hall, sitting room, kitchen diner, utility room, two double bedrooms and shower room. The property also benefits from a rear garden with lawn and patio, and separate garage accessed via the communal parking area.

Viewing

Please contact our Market Harborough Office on 01858 450020 if you wish to arrange a viewing appointment for this property or require further information.



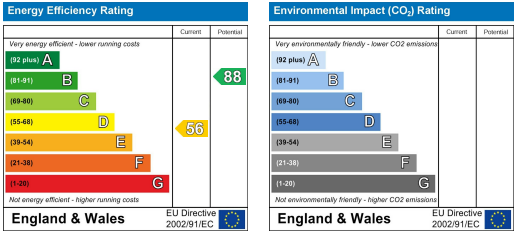
Floor Plan



Area Map



Energy Efficiency Graph



These particulars, whilst believed to be accurate are set out as a general outline only for guidance and do not constitute any part of an offer or contract. Intending purchasers should not rely on them as statements of representation of fact, but must satisfy themselves by inspection or otherwise as to their accuracy. No person in this firm's employment has the authority to make or give any representation or warranty in respect of the property.