



Naylors

ESTATE AGENTS CHARTERED SURVEYORS



Unit 4 24 Pillings Road

, Oakham, LE15 6QF

£420

Commercial Business unit suitable for various warehouse, industrial and trade counter uses.

Price: £420.00 pcm (£5,000 pa)

Approx 300 sq ft

Roller shutter

Allocated parking

Unit with WC facilities

Viewing strictly by appointment only.

Viewing

Please contact our Market Harborough Office on 01858 450020 if you wish to arrange a viewing appointment for this property or require further information.



null



null



null



Floor Plan

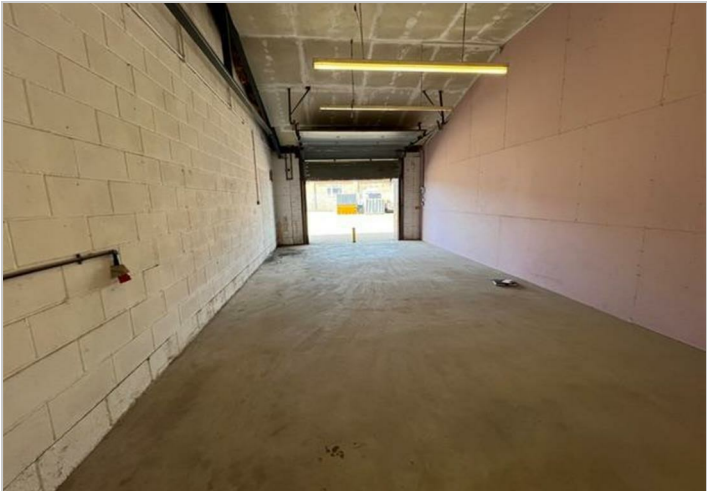


Area Map



Energy Efficiency Graph

Energy Efficiency Rating			Environmental Impact (CO ₂) Rating		
	Current	Potential		Current	Potential
Very energy efficient - lower running costs			Very environmentally friendly - lower CO ₂ emissions		
(92 plus) A			(92 plus) A		
(81-91) B			(81-91) B		
(69-80) C			(69-80) C		
(55-68) D			(55-68) D		
(39-54) E			(39-54) E		
(21-38) F			(21-38) F		
(1-20) G			(1-20) G		
Not energy efficient - higher running costs			Not environmentally friendly - higher CO ₂ emissions		
England & Wales		EU Directive 2002/91/EC	England & Wales		EU Directive 2002/91/EC



These particulars, whilst believed to be accurate are set out as a general outline only for guidance and do not constitute any part of an offer or contract. Intending purchasers should not rely on them as statements of representation of fact, but must satisfy themselves by inspection or otherwise as to their accuracy. No person in this firm's employment has the authority to make or give any representation or warranty in respect of the property.