



**Taylors**



# Teasdale Way, Wollescote, Stourbridge, DY9 7ET

3 1 1





A beautifully presented three-bedroom semi-detached home offering versatile accommodation. On entering the property, you are welcomed by a entrance hall which leads to a spacious living room. Beyond, a flexible reception room provides the option of a dining room, playroom or study, while the well-appointed kitchen is complemented by a separate utility room. An internal hallway with stairs rises to the first floor.

The upper level offers three well-proportioned bedrooms, together with a truly stunning bathroom featuring a free-standing bath and a separate shower, designed to provide both luxury and comfort.

To the rear, the garden comprises a patio area, steps leading to a lawn, and a further lawn and patio beyond. At the front of the property, a garage and driveway provide convenient parking and additional storage.

This is a superb opportunity to acquire a spacious and stylish home in a desirable location. Viewing is highly recommended to appreciate all that this property has to offer.

Tenure: Freehold. Construction: Standard. Services: All mains. Mining report: Available for prospective buyers to view on request. Broadband/Mobile coverage: Flood Risk: Surface Water: Low, Visit: [checker.ofcom.org.uk/en-gb/broadband-coverage](http://checker.ofcom.org.uk/en-gb/broadband-coverage). Council Tax Band C. EPC C.

**Entrance Hall** - 2.57m x 0.91m (8'5" x 3'0") At widest points

**Kitchen** - 3.96m x 2.34m (13'0" x 7'8") At widest points

**Living Room** - 7.04m x 3.28m (23'1" x 10'9") At widest points

**Dining Room/Play Room** - 2.64m x 2.36m (8'8" x 7'9") At widest points

**Utility Room** - 2.06m x 1.91m (6'9" x 6'3") At widest points

**First Floor Landing** - 1.93m x 0.74m (6'4" x 2'5") At widest points

**Bedroom One** - 3.48m x 3.05m (11'5" x 10'0") At widest points

**Bedroom Two** - 3.35m x 3.25m (11'0" x 10'8") At widest points

**Bedroom Three** - 2.57m x 2.31m (8'5" x 7'7") At widest points

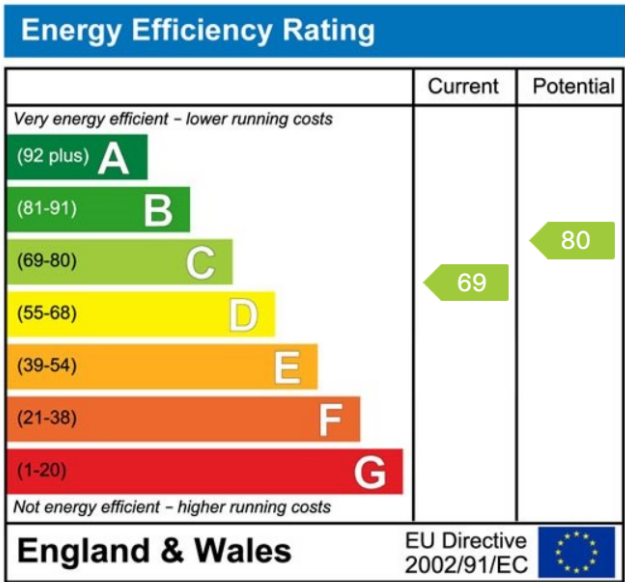
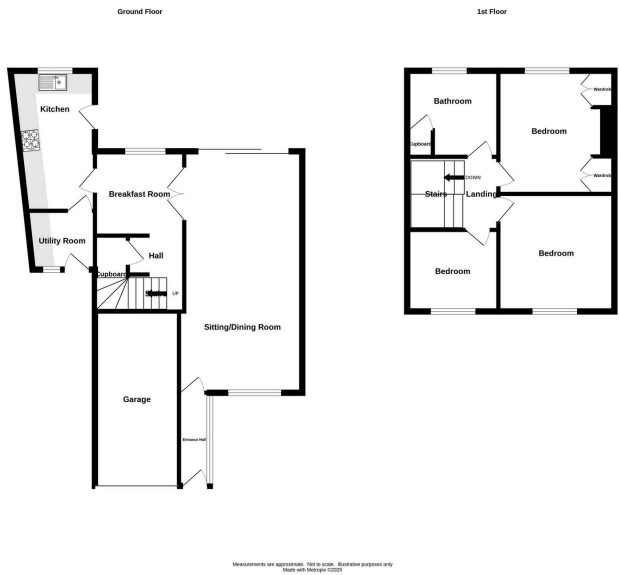
**Bathroom** - 2.54m x 2.36m (8'4" x 7'9") At widest points

**Garage** - 4.98m x 2.54m (16'4" x 8'4") At widest points





- THREE GOOD SIZE BEDROOMS
- MODERN FITTED BATHROOM
- DRIVEWAY PARKING
- GARAGE
- UTILITY
- SPACIOUS LIVING ROOM



**MISREPRESENTATION ACT 1967:** These particulars do not constitute any part of an offer or a contract. Whilst every care is taken to ensure accuracy, no responsibility for errors or misdescription is accepted. Any intending purchaser must satisfy themselves by inspection or otherwise as to the correctness of each of the statements in these particulars. The vendor does not make nor give, and neither Taylors nor any person in their employment has any authority to make or give any representation or warranty whatsoever about this property. As the seller's estate agents, we are not surveyors or conveyancing experts, and we cannot comment on the property's condition or issues relating to the title or other legal issues that may affect this property unless we have been made aware of such matters. Interested parties should employ professionals to make such enquiries before making transactional decisions. **EPC:** can be supplied free of charge. **CONSUMER PROTECTION REGULATIONS (2008):** These particulars have been prepared with care and approved by the vendors (where possible) but are intended as a guide only, with measurements being approximate and usually the maximum size, which may include alcoves, recesses or otherwise as described, and you must NOT rely on them for any other purpose. The appearance of an item in any photograph does not mean that it forms part of the property or sale price. **FIXTURES AND FITTINGS:** Only those items specifically mentioned in these sales particulars are included in the sale price. Taylors have NOT tested any apparatus, equipment, fixture or fitting and cannot verify they are in working order or fit for their purpose. **PLANNING PERMISSION / BUILDING REGULATIONS:** Any reference to the property being extended, altered or converted in any way does not infer that planning permission or building regulations have been granted or applied for, nor do Taylors accept any responsibility for such not having been obtained. **FLOOR PLAN:** This plan is for illustrative purposes only. The services, systems and appliances shown have not been tested and no guarantee as to their operability or efficiency can be given.