



Taylors

Sugar Loaf Lane, Ismere, Kidderminster DY10 3PE

From £299,950

🛏 2 🍳 2 🛋 2



Enjoying lovely views of countryside across the Lane itself, and located twixt Stourbridge and Kidderminster in the hamlet known as Ismere, this BEAUTIFULLY PRESENTED AND THOUGHTFULLY IMPROVED, TWO BEDROOM, PERIOD TERRACE COTTAGE presents a layout with many notable features, and with central heating (LPG) and double glazing briefly comprises: Hall, Sitting Room, IMPRESSIVE LARGE COMBINED DINING KITCHEN, Utility, Guests Cloakroom/Shower Room, Landing, Two Bedrooms and Delightful Bathroom. Enclosed Patio to the front and with a LOVELY GARDEN at the rear (and with brick shed located nearby). Tenure: Freehold. Construction: Standard. Services: Mains electricity and water, cesspit and LPG. Broadband/ Mobile coverage: Visit: checker.ofcom.org.uk/en-gb/broadband-coverage. Council Tax Band D. EPC E.

HALL - 7' 7" x 2' 10" (2.31m x 0.86m)

SITTING ROOM - 14' 0" x 9' 9" (4.26m x 2.97m)

COMBINED DINING KITCHEN - 17' 6" x 13' 2" (5.33m x 4.01m)

UTILITY - 6' 6" x 4' 1" (1.98m x 1.24m)

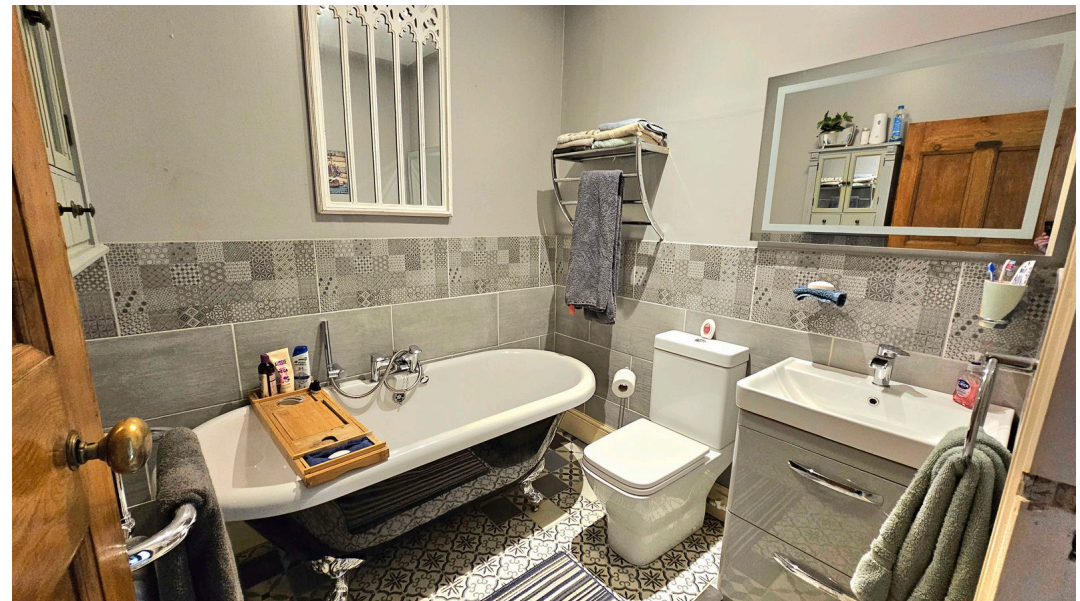
SHOWER ROOM - 7' 4" x 5' 10" (2.23m x 1.78m)

LANDING

BEDROOM ONE - 14' 2" x 13' 1" (4.31m x 3.98m)

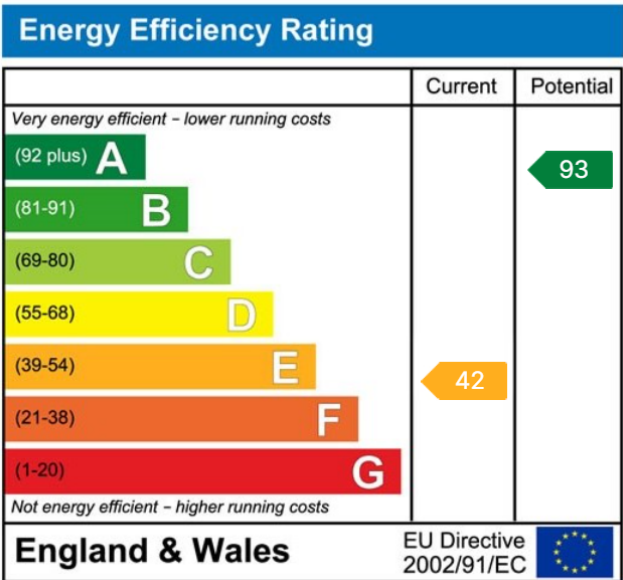
BEDROOM TWO - 11' 0" x 10' 10" (3.35m x 3.30m)
Measured at widest points

BATHROOM - 6' 10" x 6' 6" (2.08m x 1.98m)





- NO UPWARD CHAIN
- THOUGHTFULLY IMPROVED THROUGHOUT
- LARGE COMBINED DINING KITCHEN WITH UTILITY OFF
- DELIGHTFUL BATHROOM AND EXTRA SHOWER ROOM
- LOVELY REAR GARDEN
- EQUIDISTANT TO STOURBRIDGE AND KIDDERMINSTER
- VIEWINGS STRICTLY BY APPOINTMENT



MISREPRESENTATION ACT 1967: These particulars do not constitute any part of an offer or a contract. Whilst every care is taken to ensure accuracy, no responsibility for errors or misdescription is accepted. Any intending purchaser must satisfy themselves by inspection or otherwise as to the correctness of each of the statements in these particulars. The vendor does not make nor give, and neither Taylors nor any person in their employment has any authority to make or give any representation or warranty whatsoever about this property. As the seller's estate agents, we are not surveyors or conveyancing experts, and we cannot comment on the property's condition or issues relating to the title or other legal issues that may affect this property unless we have been made aware of such matters. Interested parties should employ professionals to make such enquiries before making transactional decisions. **EPC:** can be supplied free of charge. **CONSUMER PROTECTION REGULATIONS (2008):** These particulars have been prepared with care and approved by the vendors (where possible) but are intended as a guide only, with measurements being approximate and usually the maximum size, which may include alcoves, recesses or otherwise as described, and you must NOT rely on them for any other purpose. The appearance of an item in any photograph does not mean that it forms part of the property or sale price. **FIXTURES AND FITTINGS:** Only those items specifically mentioned in these sales particulars are included in the sale price. Taylors have NOT tested any apparatus, equipment, fixture or fitting and cannot verify they are in working order or fit for their purpose. **PLANNING PERMISSION / BUILDING REGULATIONS:** Any reference to the property being extended, altered or converted in any way does not infer that planning permission or building regulations have been granted or applied for, nor do Taylors accept any responsibility for such not having been obtained. **FLOOR PLAN:** This plan is for illustrative purposes only. The services, systems and appliances shown have not been tested and no guarantee as to their operability or efficiency can be given.