

Marketing Preview



77 Deepwell Avenue, Halfway, Sheffield, S20 4SS

£110,000

Bedrooms 1, Bathrooms 1, Reception Rooms 1



Superbly located property with garage which is competitively priced for a swift sale—perfect for first-time buyers or savvy investors seeking value and convenience!

Priced for a quick sale; ideal for a first time buyer or investor.

The ground floor comprises a hallway, under-stairs storage space, and a bathroom fitted with a bath, sink, and WC. Stairs rise to the first floor.

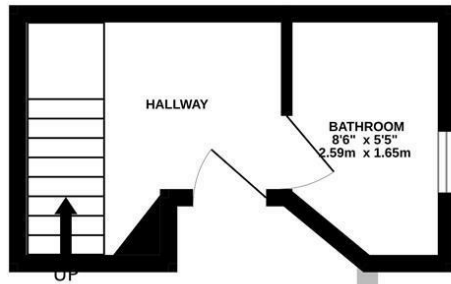
The first floor comprises a lounge, a bedroom with fitted wardrobes, and a kitchen fitted with wall and base units, an oven, hob, extractor fan, and a sink with drainer and mixer tap.

PROPERTY DETAILS

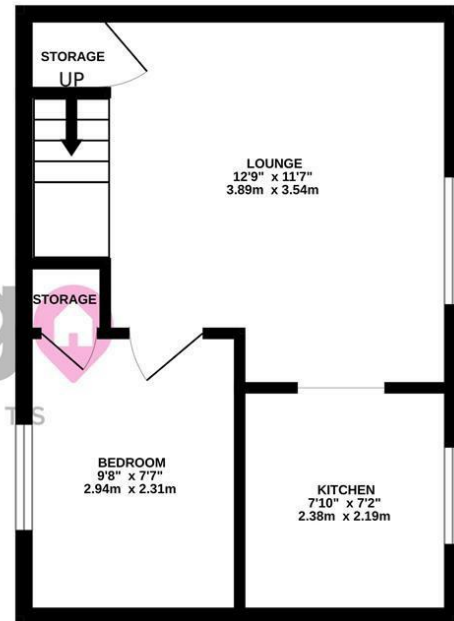
- FREEHOLD
- FULLY UPVC DOUBLE GLAZED
- ELECTRIC HEATING THROUGHOUT
- COUNCIL TAX BAND A - SHEFFIELD CITY COUNCIL

PLEASE SEE FLOORPLAN FOR ROOM MEASUREMENTS

GROUND FLOOR

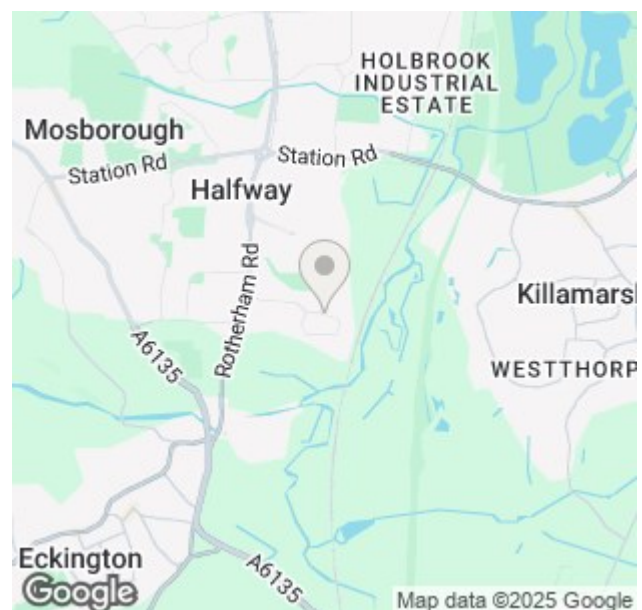


1ST FLOOR



Whilst every attempt has been made to ensure the accuracy of the floorplan contained here, measurements of doors, windows, rooms and any other items are approximate and no responsibility is taken for any error, omission or mis-statement. This plan is for illustrative purposes only and should be used as such by any prospective purchaser. The services, systems and appliances shown have not been tested and no guarantee as to their operability or efficiency can be given.
Made with Metropix ©2025

Energy Efficiency Rating		
	Current	Potential
Very energy efficient - lower running costs		
(92 plus) A		91
(81-91) B		
(69-80) C		
(55-68) D		
(39-54) E		
(21-38) F	45	
(1-20) G		
Not energy efficient - higher running costs		
England & Wales	EU Directive 2002/91/EC	



38a High Street, Mosborough, Sheffield, S20 5AE

Tel: 0114 2478819 Email: sales@key2go.co.uk <https://www.key2go.co.uk>