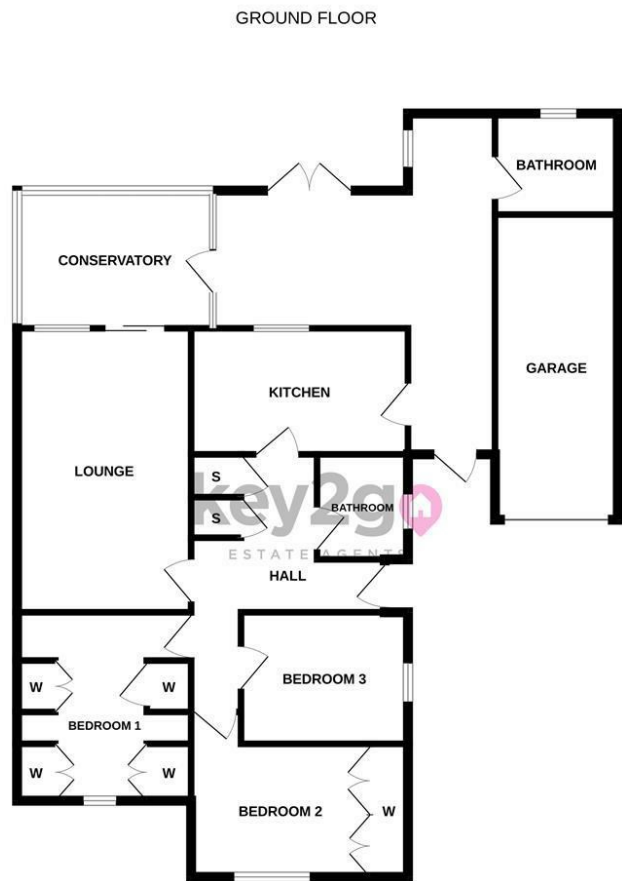


Floorplan

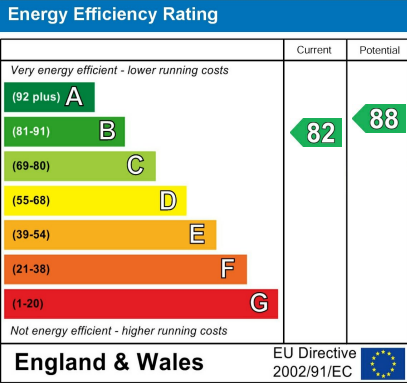


Whilst every attempt has been made to ensure the accuracy of the floorplans contained here, measurements of doors, windows, rooms and any other items are approximate and no responsibility is taken for any error, omission or mis-statement. This plan is for illustrative purposes only and should be used as such for any prospective purchaser. The services, systems and appliances shown have not been tested and no guarantee is given to their operability or efficiency can be given.  
Made with Metropix ©2025

Area Map



Energy Efficiency Graph



Viewing

Please contact our Lettings Team Office on 0114 2478819 if you wish to arrange a viewing appointment for this property or require further information.

These particulars, whilst believed to be accurate are set out as a general outline only for guidance and do not constitute any part of an offer or contract. Intending purchasers should not rely on them as statements of representation of fact, but must satisfy themselves by inspection or otherwise as to their accuracy. No person in this firms employment has the authority to make or give any representation or warranty in respect of the property.



10 Brampton Court  
Owlthorpe, Sheffield, S20 6RF

£1,200 PCM





# 10 Brampton Court

Owlthorpe, Sheffield, S20 6RF

£1,200 PCM



AVAILABLE NOW! A modern 3 bedroom detached bungalow with Two Bathrooms. Ideally located in a quiet and sought-after residential area. Brand new modern fitted kitchen featuring modern units and ample storage. Set in a quiet residential street, yet close to local shops and transport links. Ideal for families, couples or professionals.  
A rare rental opportunity!

