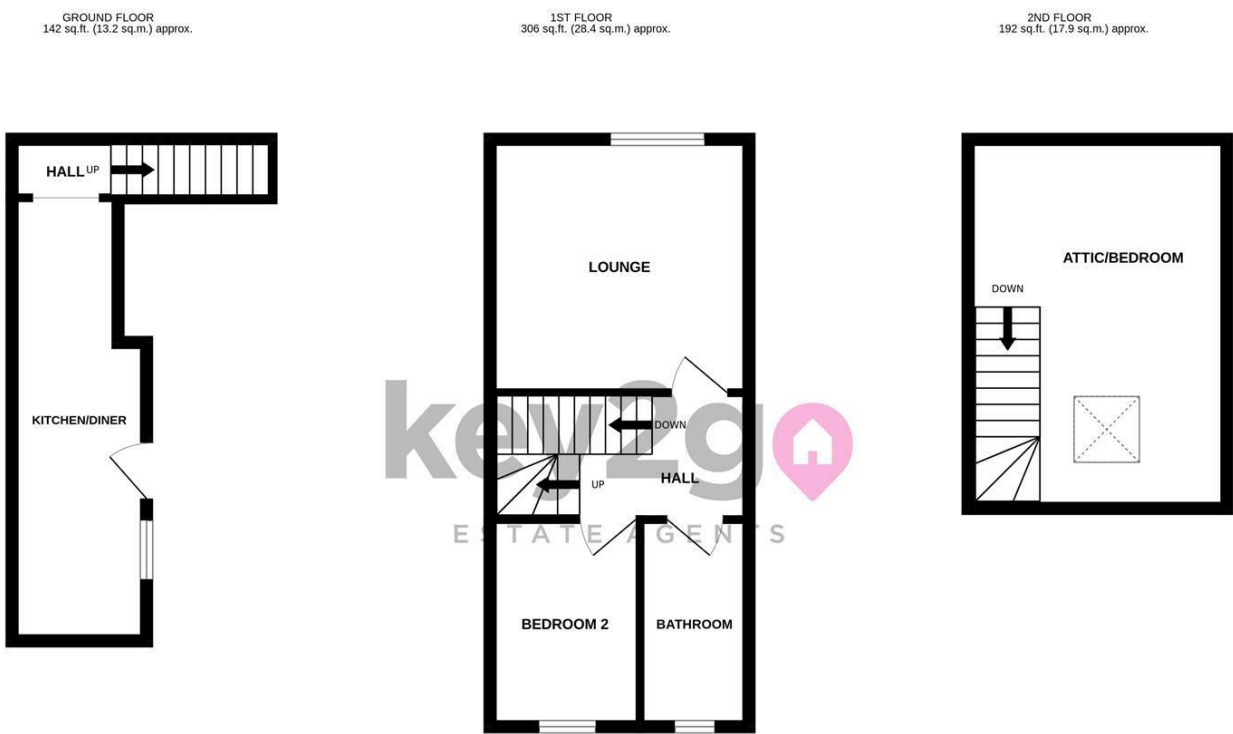


Floorplan

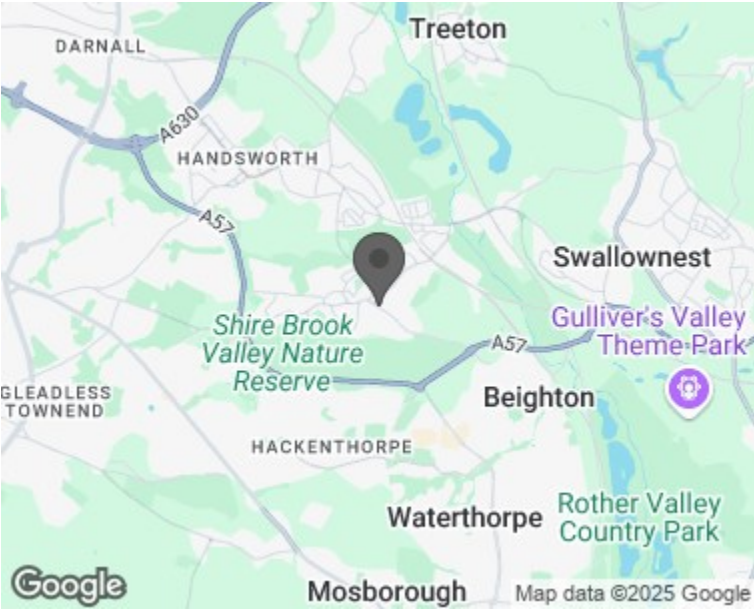


TOTAL FLOOR AREA : 640 sq.ft. (59.5 sq.m.) approx.

Whilst every attempt has been made to ensure the accuracy of the floorplan contained here, measurements of doors, windows, rooms and any other items are approximate and no responsibility is taken for any error, omission or mis-statement. This plan is for illustrative purposes only and should be used as such by any prospective purchaser. The services, systems and appliances shown have not been tested and no guarantee as to their operability or efficiency can be given.

Made with Metropix ©2025

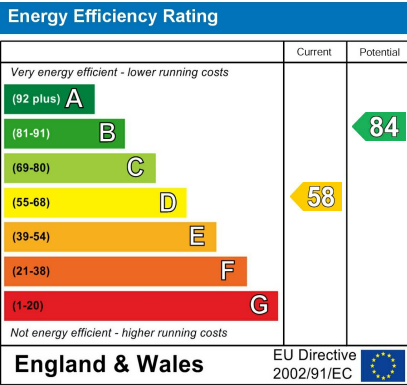
Area Map



These particulars, whilst believed to be accurate are set out as a general outline only for guidance and do not constitute any part of an offer or contract. Intending purchasers should not rely on them as statements of representation of fact, but must satisfy themselves by inspection or otherwise as to their accuracy. No person in this firms employment has the authority to make or give any representation or warranty in respect of the property.

38a High Street, Mosborough, Sheffield, S20 5AE
Tel: 0114 2478819 Email: lettings@key2go.co.uk <https://www.key2go.co.uk>

Energy Efficiency Graph



Viewing

Please contact our Lettings Team Office on 0114 2478819 if you wish to arrange a viewing appointment for this property or require further information.



15A Beighton Road
Woodhouse, Sheffield, S13 7PL

£700 PCM

2 1 null D



15A Beighton Road

Woodhouse, Sheffield, S13 7PL

£700 PCM



AVAILABLE NOW! 2 bed flat to rent in the popular area of Woodhouse set over 3 floors. Close to local amenities. Well presented throughout, just been decorated. Property briefly consists of kitchen diner, spacious lounge, two bedrooms including good sized attic bedroom and bathroom.

