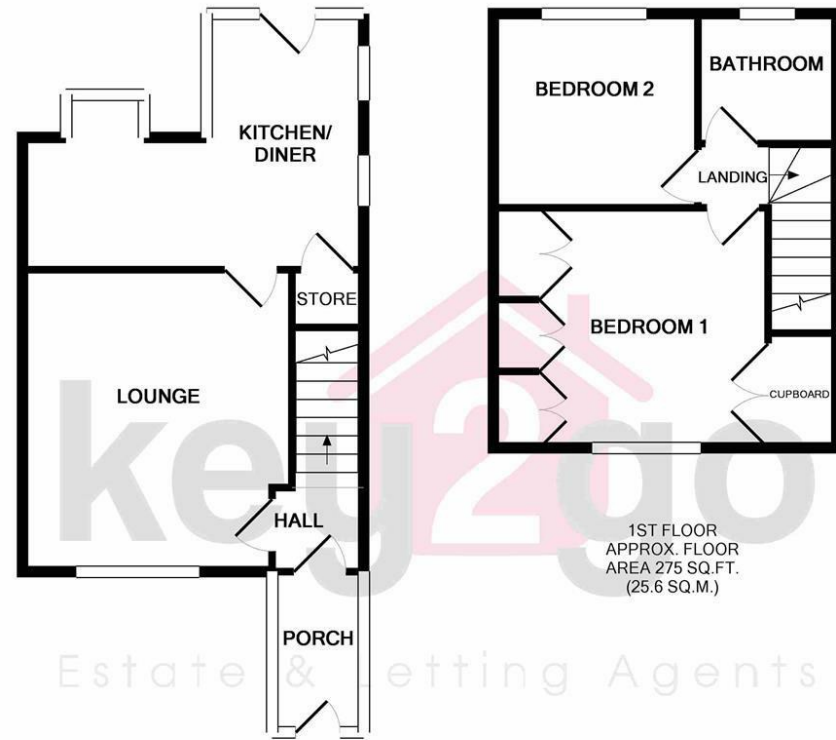


Floorplan



GROUND FLOOR  
APPROX. FLOOR  
AREA 342 SQ.FT.  
(31.8 SQ.M.)

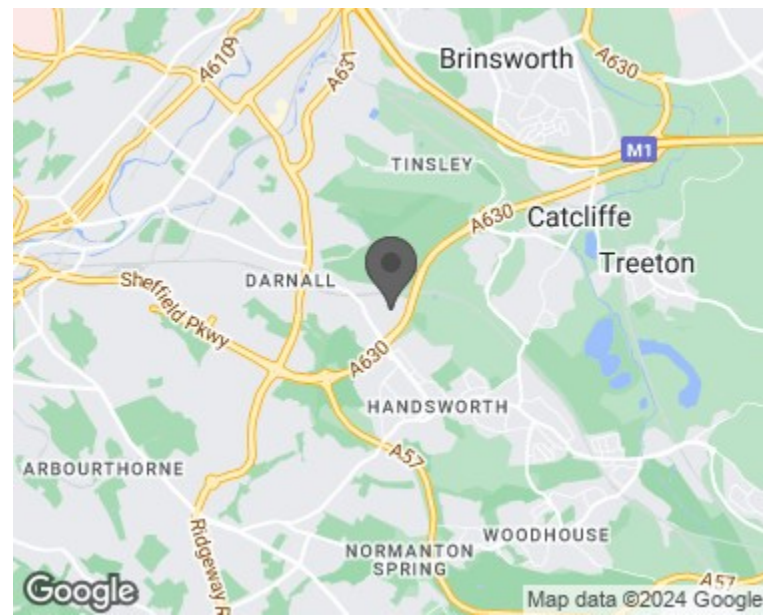
1ST FLOOR  
APPROX. FLOOR  
AREA 275 SQ.FT.  
(25.6 SQ.M.)

TOTAL APPROX. FLOOR AREA 618 SQ.FT. (57.4 SQ.M.)

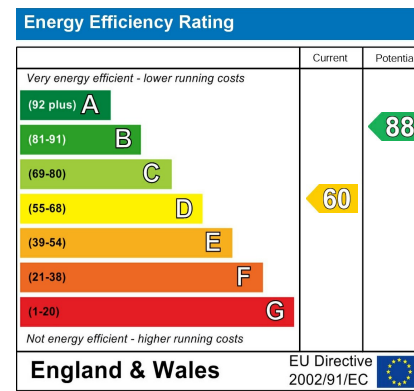
Whilst every attempt has been made to ensure the accuracy of the floor plan contained here, measurements of doors, windows, rooms and any other items are approximate and no responsibility is taken for any error, omission, or mis-statement. This plan is for illustrative purposes only and should be used as such by any prospective purchaser. The services, systems and appliances shown have not been tested and no guarantee as to their operability or efficiency can be given  
Made with Metropix ©2018



Area Map



Energy Efficiency Graph



54 Maple Grove  
Sheffield, S9 4AR

£775 PCM



Viewing

Please contact our Lettings Team Office on 0114 2478819 if you wish to arrange a viewing appointment for this property or require further information.



These particulars, whilst believed to be accurate are set out as a general outline only for guidance and do not constitute any part of an offer or contract. Intending purchasers should not rely on them as statements of representation of fact, but must satisfy themselves by inspection or otherwise as to their accuracy. No person in this firm's employment has the authority to make or give any representation or warranty in respect of the property.



# 54 Maple Grove

Sheffield, S9 4AR

£775 PCM



BEAUTIFUL home with MODERN interior and ample space set close to LOCAL AMENITIES! PLEASE CLICK TO READ MORE ABOUT THIS PROPERTY.

Situated on a quiet road, which has become a very popular place to live due to its close proximity to a range of local amenities, great road links and Sheffield city centre which boasts a variety of high street shopping, fine cuisine and ideal train links.

Also boasting a very short journey to the National Peak District, which is picture perfect and superb for walking and cycling with the most splendid picnic spots!

The property itself has been truly loved and cared for; it could easily be transformed into a warm and welcoming home!

