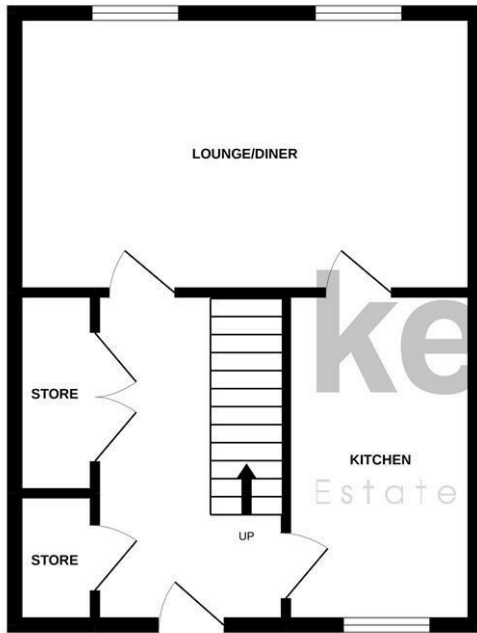
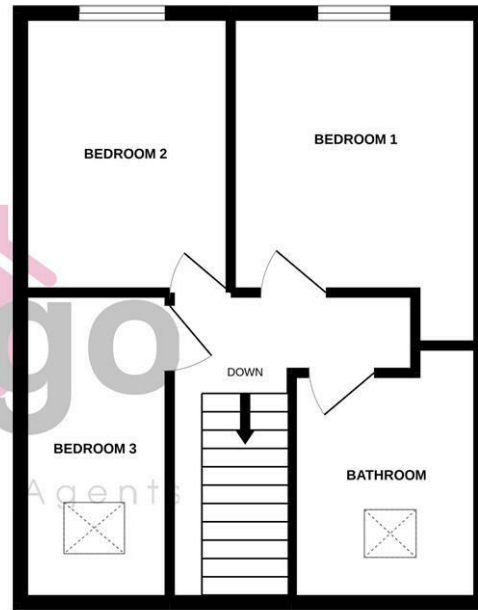


Floorplan

GROUND FLOOR
414 sq.ft. (38.5 sq.m.) approx.



1ST FLOOR
399 sq.ft. (37.1 sq.m.) approx.



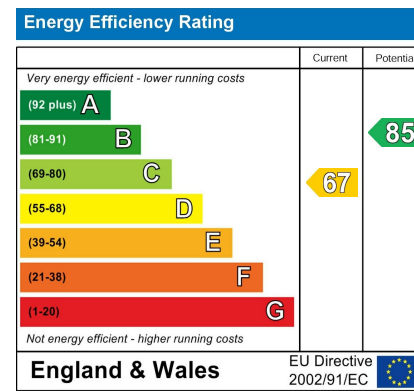
TOTAL FLOOR AREA : 814 sq.ft. (75.6 sq.m.) approx.

Whilst every attempt has been made to ensure the accuracy of the floorplan contained here, measurements of doors, windows, rooms and any other items are approximate and no responsibility is taken for any error, omission or mis-statement. This plan is for illustrative purposes only and should be used as such by any prospective purchaser. The services, systems and appliances shown have not been tested and no guarantee as to their operability or efficiency can be given.
Made with Metropix ©2022

Area Map



Energy Efficiency Graph



Viewing

Please contact our Lettings Team Office on 0114 2478819 if you wish to arrange a viewing appointment for this property or require further information.

These particulars, whilst believed to be accurate are set out as a general outline only for guidance and do not constitute any part of an offer or contract. Intending purchasers should not rely on them as statements of representation of fact, but must satisfy themselves by inspection or otherwise as to their accuracy. No person in this firm's employment has the authority to make or give any representation or warranty in respect of the property.

38a High Street, Mosborough, Sheffield, S20 5AE
Tel: 0114 2478819 Email: lettings@key2go.co.uk <https://www.key2go.co.uk>



8 Osprey Gardens
Manor, Sheffield, S2 5GE

£800 PCM



8 Osprey Gardens

Manor, Sheffield, S2 5GE

£800 PCM



Don't miss out on your opportunity to rent this spacious, three bedroomed town house with great links to Sheffield City Centre and other local amenities - neutrally decorated throughout and with an enclosed, low maintenance garden. A viewing is a must!

SUMMARY

Don't miss out on your opportunity to rent this spacious, three bedroomed town house with great links to Sheffield City Centre and other local amenities - neutrally decorated throughout and with an enclosed, low maintenance garden. A viewing is a must!

