

---

## CRAIGTON FARM, STIRLING, FK9 5QN

---

A luxury development of just four private dwellings offering fantastic, undisturbed views of the open countryside.



**HALLIDAY**  
HOMES

PROPERTY AND  
ESTATE AGENTS

# Your wait is over...

The builder has a sterling reputation for building quality new energy-efficient homes. Famed for meticulous craftsmanship, use of high-quality materials, and attention to detail, they deliver homes that last generations, blending charm with modern functionality.

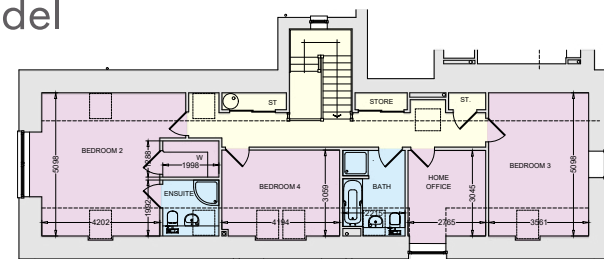
Craigton Farm is located within a prestigious area of Stirling at the foot of The Wallace Monument, and with stunning views to the Ochil Hills, the location doesn't get much better! There are 4 unique, individual homes of genuine charm and character, which form a prestigious and exclusive private community enjoying an idyllic setting within a fine and rarely available location.

Causewayhead is within easy reach of the

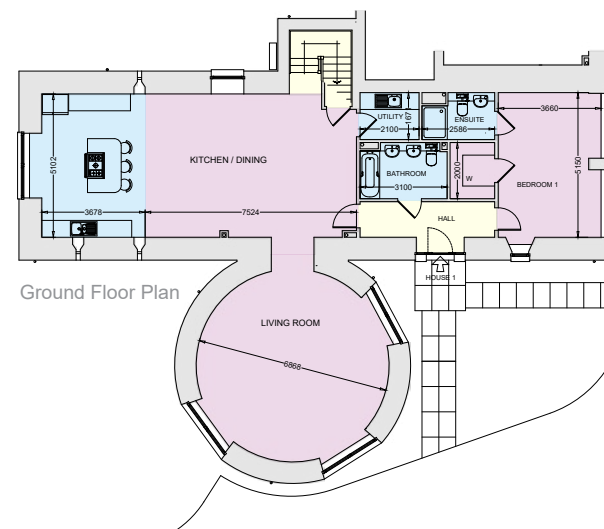
historic city centre of Stirling, with its fine range of shopping, business and leisure amenities. Schooling is available nearby at both primary and secondary level. The area is ideal for those who have to travel for business, with the M9 and M80 being easily accessible and both Stirling and Bridge of Allan railway stations provide regular services to Edinburgh and Glasgow. The property is also in close proximity to Stirling University, many of whose sporting facilities are available to the public, while Stirling itself offers a wide range of leisure and recreation facilities, including The Peak, which accommodates a wide range of sporting pursuits. In addition, there are plentiful open spaces and woodland walks. Directions - Using what3words search for [///exporters.jaundice.reworked](https://www.what3words.com/#!/exporters.jaundice.reworked)



## The Roundel



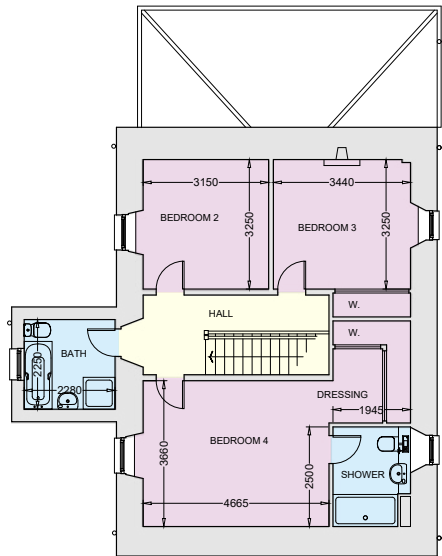
First Floor Plan



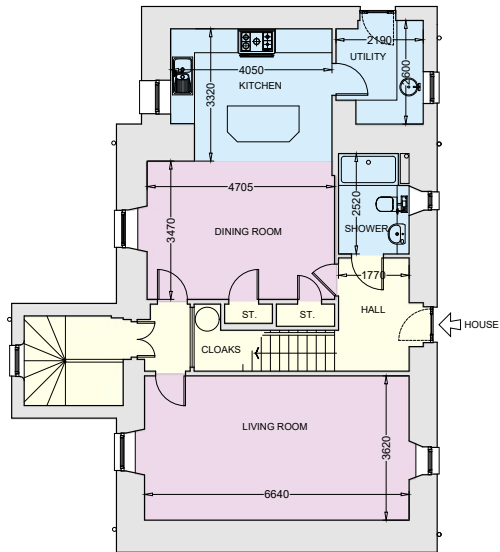
Ground Floor Plan



The Farmhouse



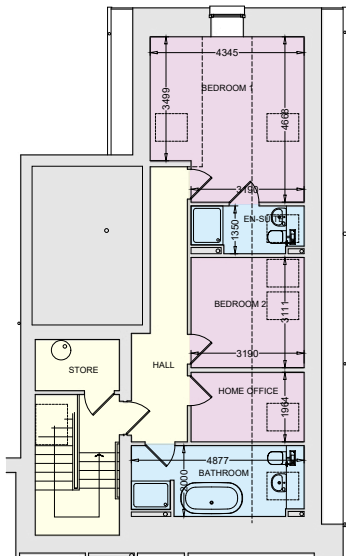
First Floor Plan



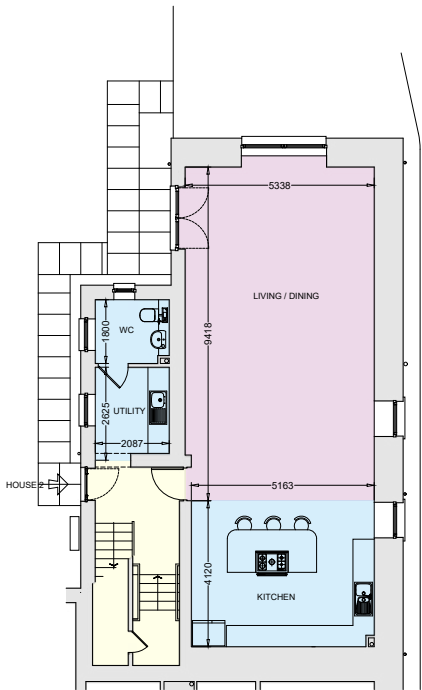
Ground Floor Plan



The Byre



First Floor Plan

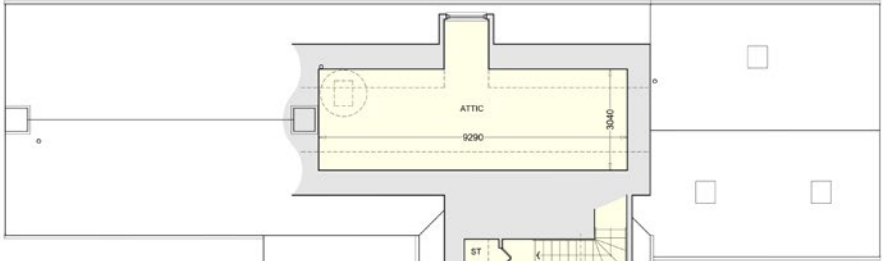


Ground Floor Plan





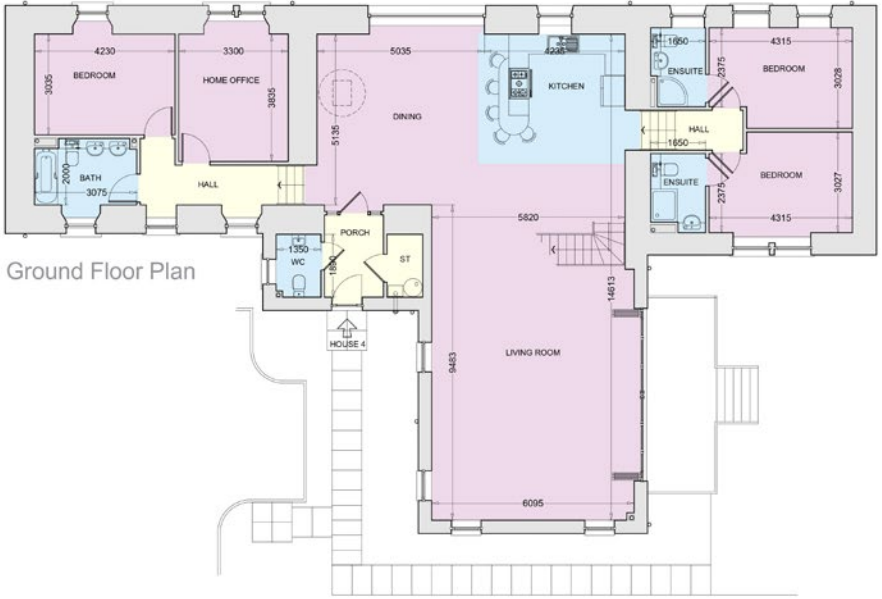
The Barn



First Floor Plan



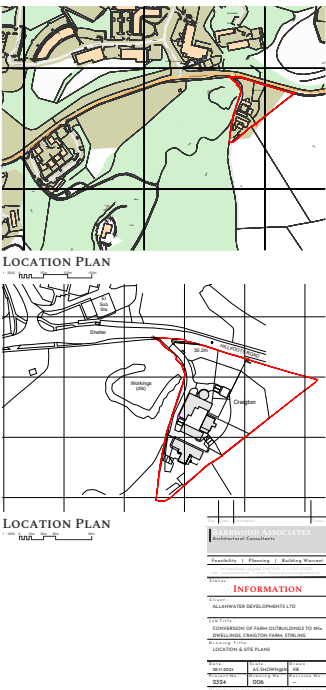
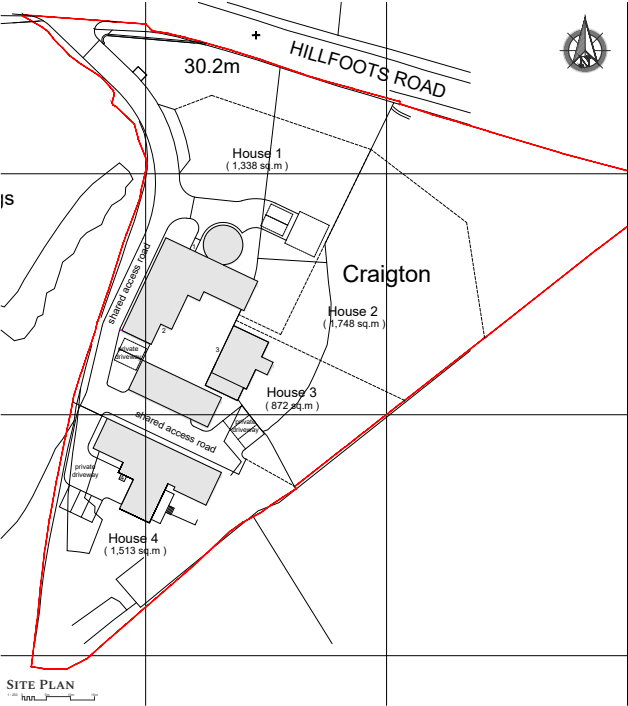
Future Garage Floor Plan



Ground Floor Plan



# Site Location



## Need more information?

If you have any questions, please contact us by telephone or email and we'll get back to you as soon as possible.

Halliday Homes  
56 Henderson Street,  
Bridge of Allan  
FK9 4HS  
Tel: 01786 833811

