

Chapel Mews

A development of 6 luxury town houses in Stowmarket, Suffolk.





DEVELOPMENT IN CENTRAL STOWMARKET, SUFFOLK

Childers Court: Planning for 13 town houses. The Old Villa: Planning for 3 apartments Chapel Mews: Planning for 6 Town Houses.

- Site cleared and shovel ready.
- All starts enacted.
- S106 agreement of just £59,972 payable on occupation.
- No Community infrastructure levy on either of the three sites.
- No Social Housing requirement on either of the three sites.
- All pre-commencement planning conditions signed off.

For more information please contact us on:

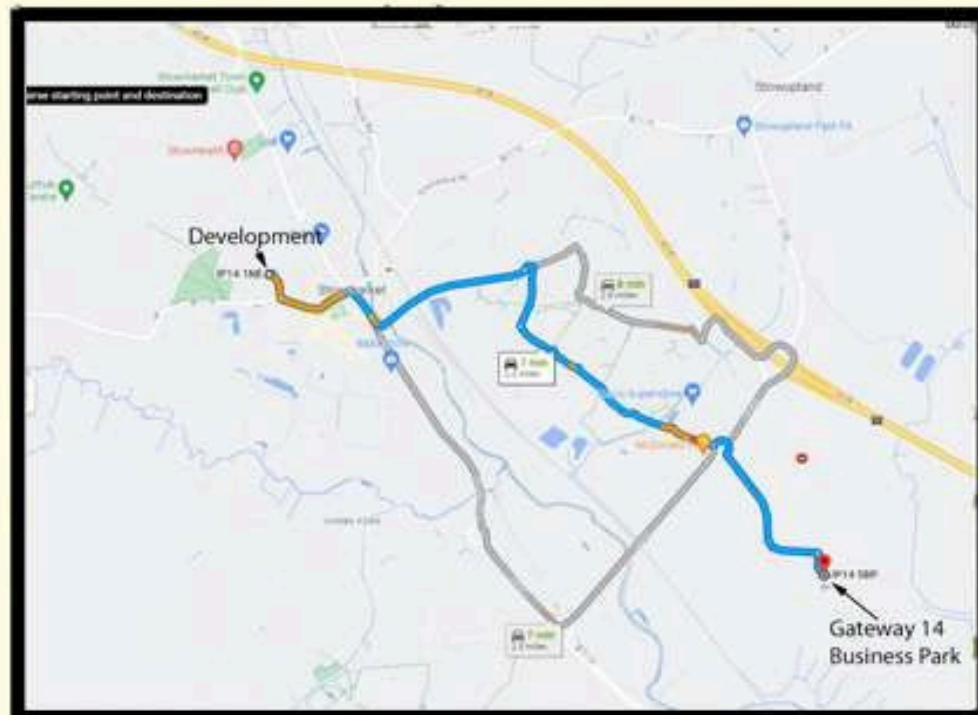
Phone: 01449 771133

Email: info@purbecks.com

Location

Stowmarket is a small market town in Suffolk that lies on the river gipping. It's situated along the busy A14 trunk road between Ipswich & Bury St Edmunds, is just 45 minutes by road from Cambridge and is also on the main Norwich to London rail line making the location ideal with a commute time of approx. 1hr 25mins.

Stowmarket is the largest Mid-Suffolk district with a the population of around 16,000, with considerable further development planned. Just a 9 Minute Drive is Gateway 14, the new 2.36 million SQ FT innovation, business and logistics park adjacent to Junction 50 of the A14 at Stowmarket.



The location along Childer Road and Violet Hill Road has a mixture of Georgian and Victorian Town Houses and a thoughtful development of modern apartments. It is a few minutes walk from the town centre, schools and other local amenities that include a fitness centre, theatre, cinema, leisure complex complete with swimming pools, climbing wall bowls green, gym and an astroturf football pitch. A few minutes walk in the opposite direction finds a large park with a Children's play area.

Site Plan



Stowmarket Accessibility

Stowmarket Railway Station offers excellent accessibility for travelers, with step-free access to platforms and clear signage to assist those with mobility impairments. The station is well-connected to major cities, including Ipswich, Cambridge, and London, making it a key hub for regional travel. The nearby A14 provides efficient road access, offering easy links to both Ipswich and Cambridge, as well as direct routes to London. With ongoing improvements to accessibility and transport options, Stowmarket is becoming an increasingly convenient and inclusive travel point for a wide range of commuters.



Stowmarket Economic Boost

Stowmarket, Suffolk, is experiencing a significant economic boost with the opening of Gateway 14, a major business and logistics hub that is transforming the area. The development includes large-scale facilities, such as The Range warehouse, which serves as a key logistics and retail distribution centre. This new development is creating a wide range of employment opportunities, from warehouse and distribution roles to management, customer service, and support positions, contributing to local job growth. As a strategically located gateway, Gateway 14 is attracting further investment, supporting both national and international businesses. The development is not only providing jobs but also stimulating economic activity, improving infrastructure, and enhancing Stowmarket's reputation as a thriving hub in Suffolk. This transformation promises a vibrant future for the local community, offering new opportunities for residents and contributing to the long-term prosperity of the region.



Stowmarket Community

Stowmarket, Suffolk, offers a vibrant mix of cultural, recreational, and educational amenities that make it an appealing place to live and visit. The John Peel Centre provides a lively venue for music, arts, and community events, while the Regal Cinema offers a charming, historic setting for catching the latest films. Families are well-served by excellent local schools, ensuring a high standard of education for children. The town boasts a strong sense of community, with events such as the annual carnival bringing people together to celebrate in style. In addition, Stowmarket is set to welcome a new sports complex, further enhancing the town's offering for active lifestyles and sporting enthusiasts. With a combination of arts, education, recreation, and community spirit, Stowmarket truly has something for everyone.



Stowmarket – A Haven for Nature and Outdoor Activities

Key Points:

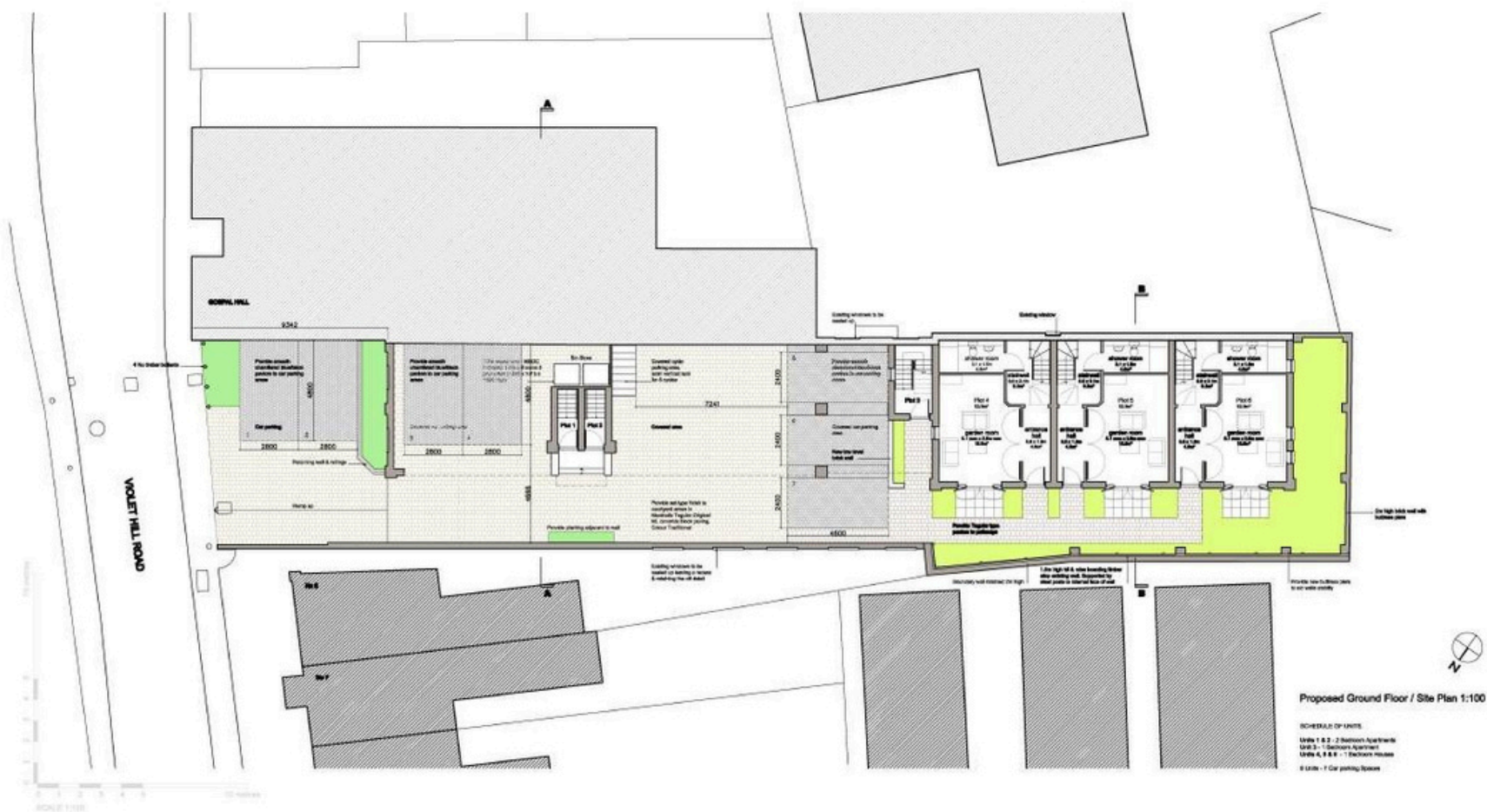
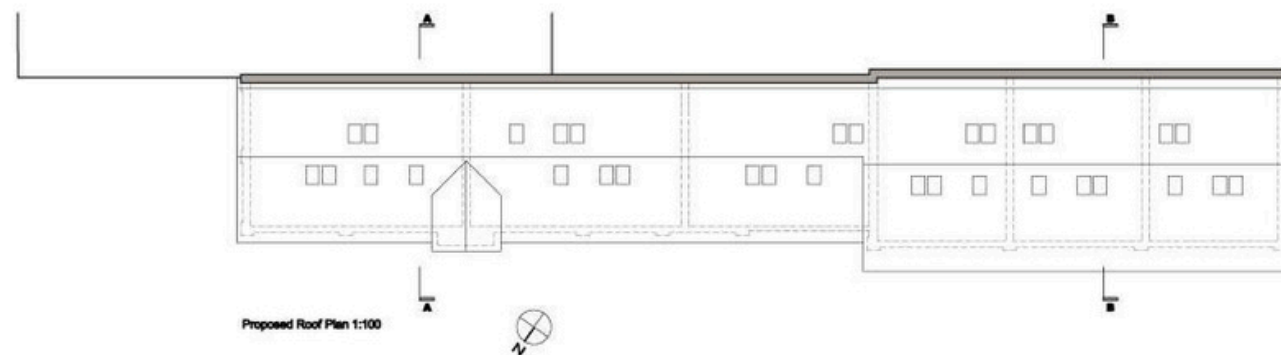
- *Rich Natural Surroundings:* Stowmarket is nestled in the heart of Suffolk, surrounded by picturesque countryside, offering abundant opportunities for nature lovers.
- *Public Footpaths & Walking Trails:* The town boasts an extensive network of public footpaths and walking trails, perfect for exploring the stunning rural landscape and enjoying the fresh air. Popular routes include the scenic walk along the River Gipping and through local woodlands.
- *Green Spaces:* Numerous parks and green spaces, such as Stowmarket's historic Cornhill and the nearby Needham Lake, provide serene spots for relaxation, picnics, and birdwatching.
- *Wildlife & Conservation:* The area is home to diverse wildlife, making it an ideal location for nature enthusiasts, photographers, and conservationists alike.
- *Access to Suffolk's Natural Beauty:* Stowmarket is well-connected to nearby nature reserves, including the Suffolk Coast and Heaths Area of Outstanding Natural Beauty, offering even more opportunities for outdoor exploration.

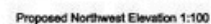
Chapel Mews

- Plot 1: - Two Bedroom Town House - 93.49 SQM
- Plot 2: - Two Bedroom Town House - 93.49 SQM
- Plot 3- One/Two Bedroom Town House - 83.64 SQM
- Plot 4 - Two/ Three Bedroom Town House - 99.64 SQM
- Plot 5 - Two/ Three Bedroom Town House - 99.64 SQM
- Plot 6 - Two/ Three Bedroom Town House - 99.64 SQM

(NB - Optional internal layouts to create additional rooms)





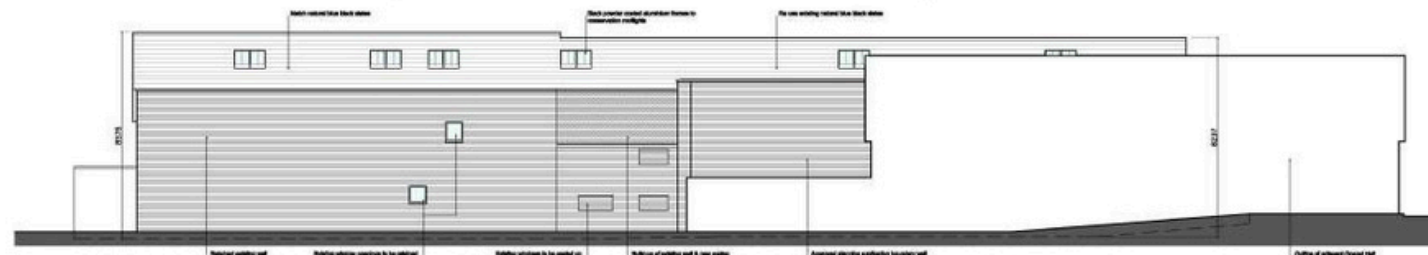




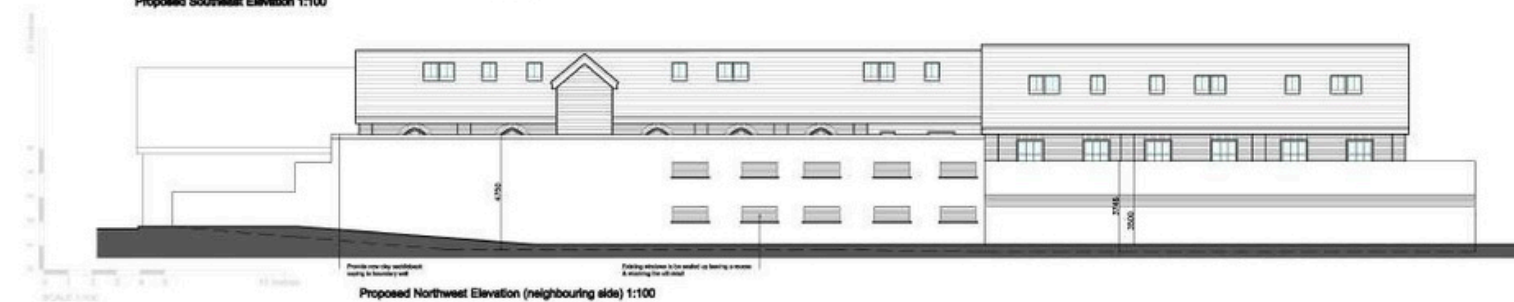
Proposed Northeast Elevation 1:100



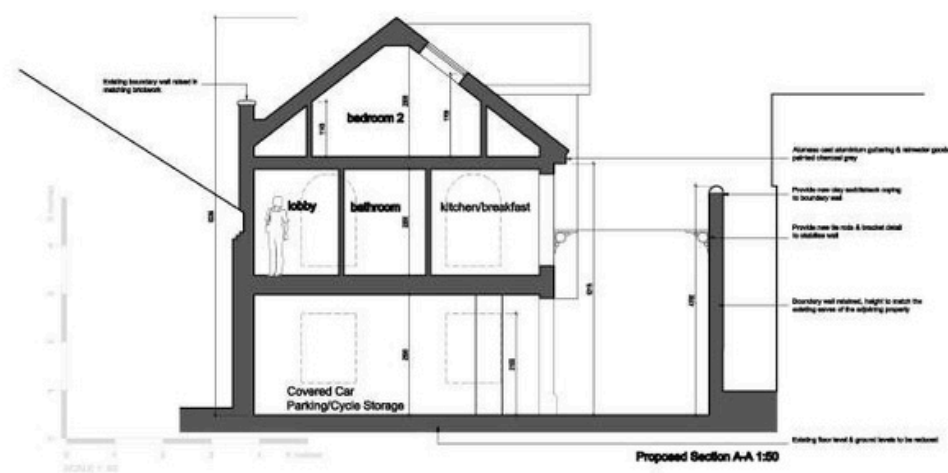
Proposed Southwest Elevation 1:100



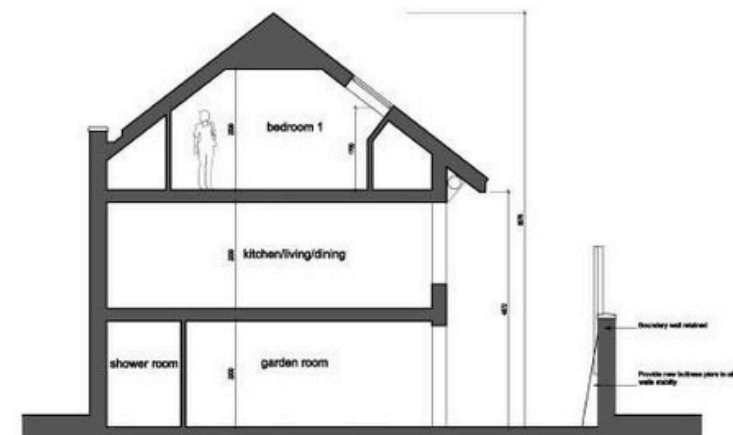
Proposed Southeast Elevation 1:100



Proposed Northwest Elevation (neighbouring side) 1:100



Proposed Section A-A 1:50



Proposed Section B-B 1:50

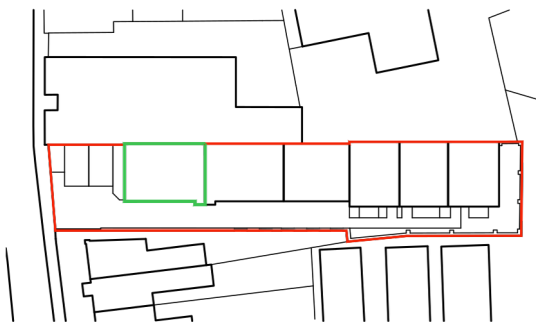


Chapel Mews- Floor Plans- Plot 1

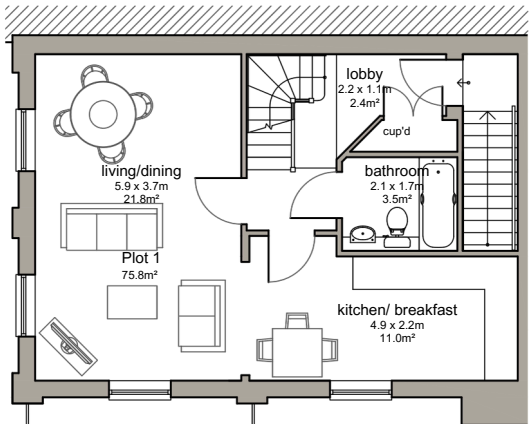
Extant planning permission provides 93.49m² GEFA No alternative plan option



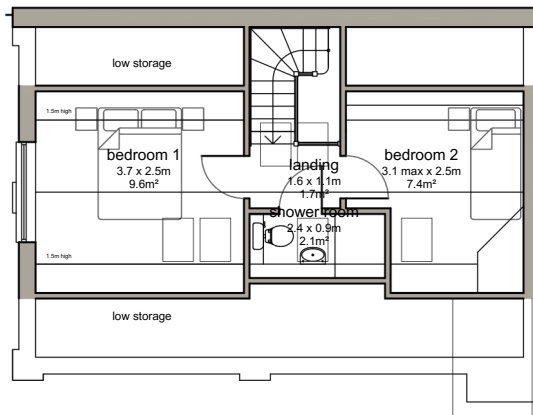
Front Elevation



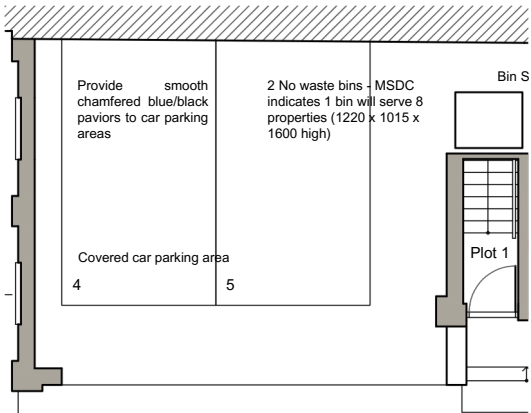
Key Plan



First Floor Plan



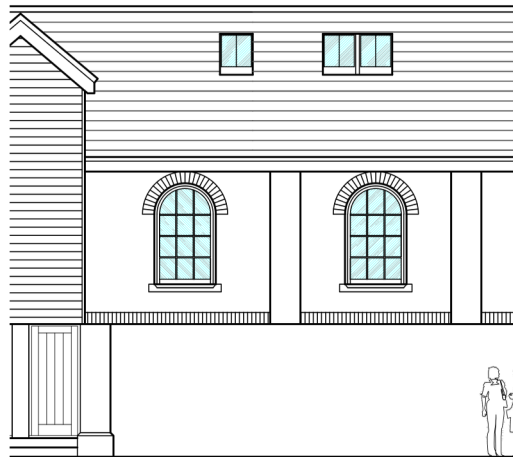
Second Floor Plan



Ground Floor Plan
Extant Planning Permission
Plot 1

Chapel Mews- Floor Plans- Plot 2

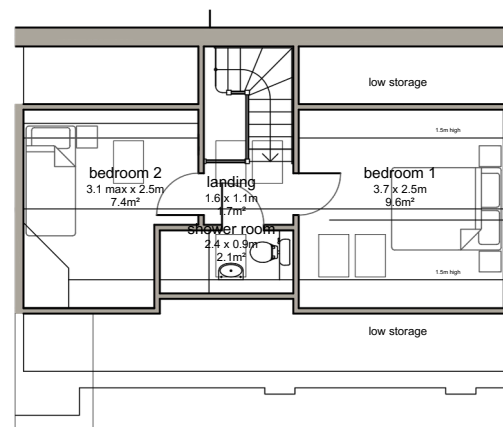
Extant planning permission provides 93.49m² GEFA No alternative plan option



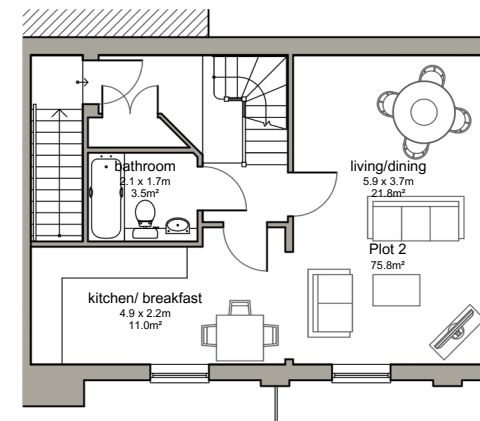
Front Elevation



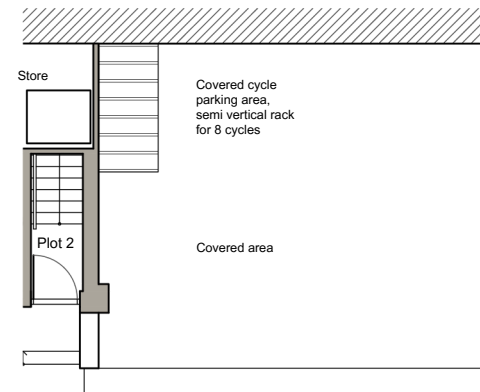
Key Plan



Second Floor Plan



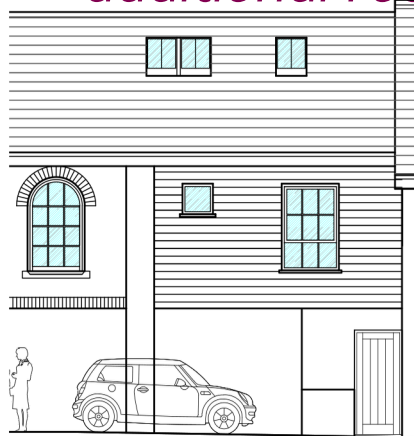
First Floor Plan



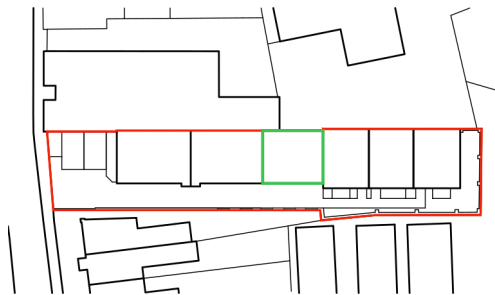
Ground Floor Plan
Extant Planning Permission
Plot 2

Chapel Mews- Floor Plans- Plot 3

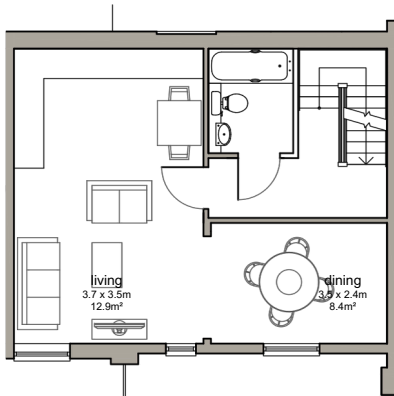
Extant planning permission provides 83.64m² GEFA Alternative plan option provides 1 additional room



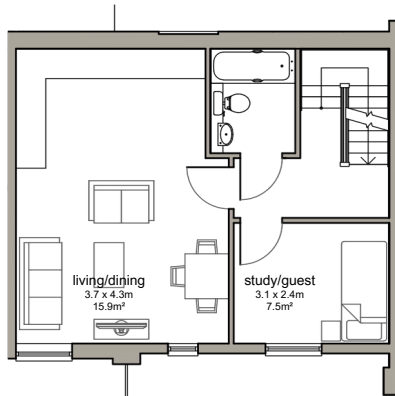
Front Elevation



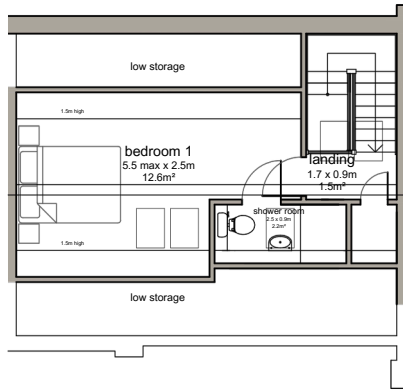
Key Plan



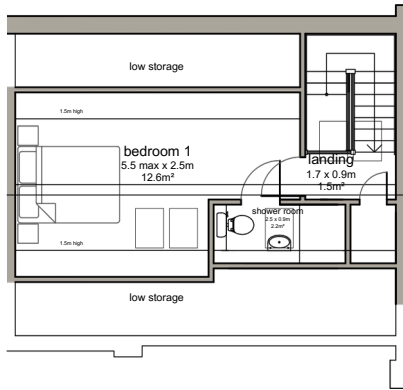
First Floor Plan



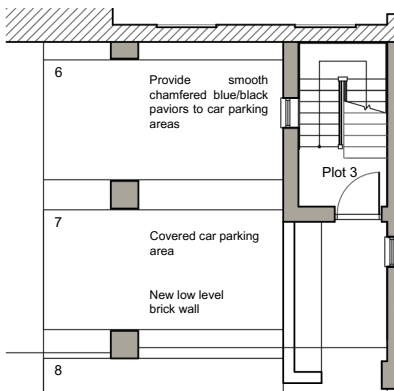
First Floor Plan



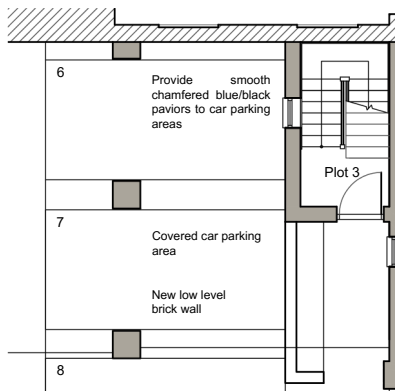
Second Floor Plan



Second Floor Plan



Ground Floor Plan
Extant Planning Permission
Plot 3



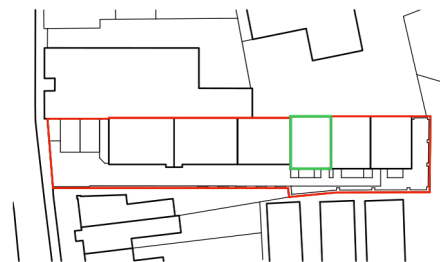
Ground Floor Plan
Option Plans

Chapel Mews- Floor Plans- Plot 4

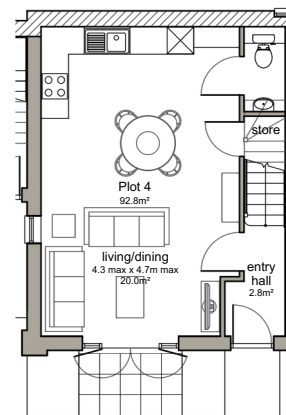
Extant planning permission provides 99.64m² GEFA Alternative plan option provides 2 additional rooms



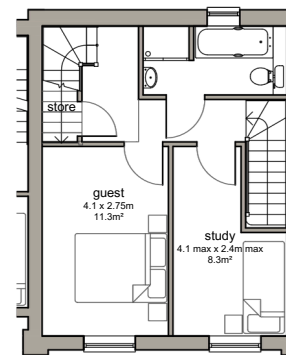
Front Elevation



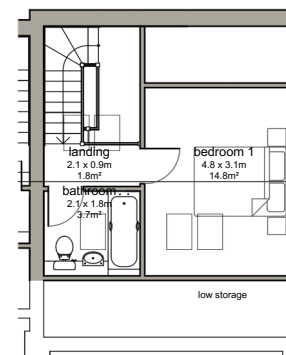
Key Plan



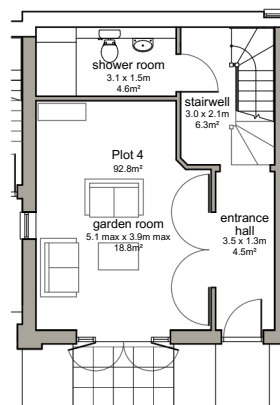
Ground Floor Plan
Option Plans
Plot 4



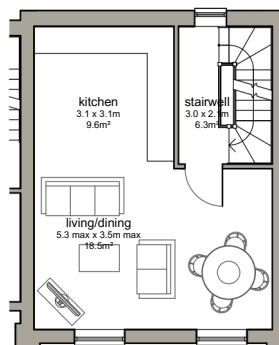
First Floor Plan



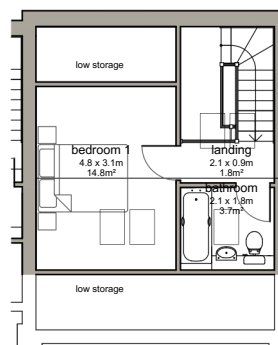
Second Floor Plan



Ground Floor Plan
Extant Planning Permission



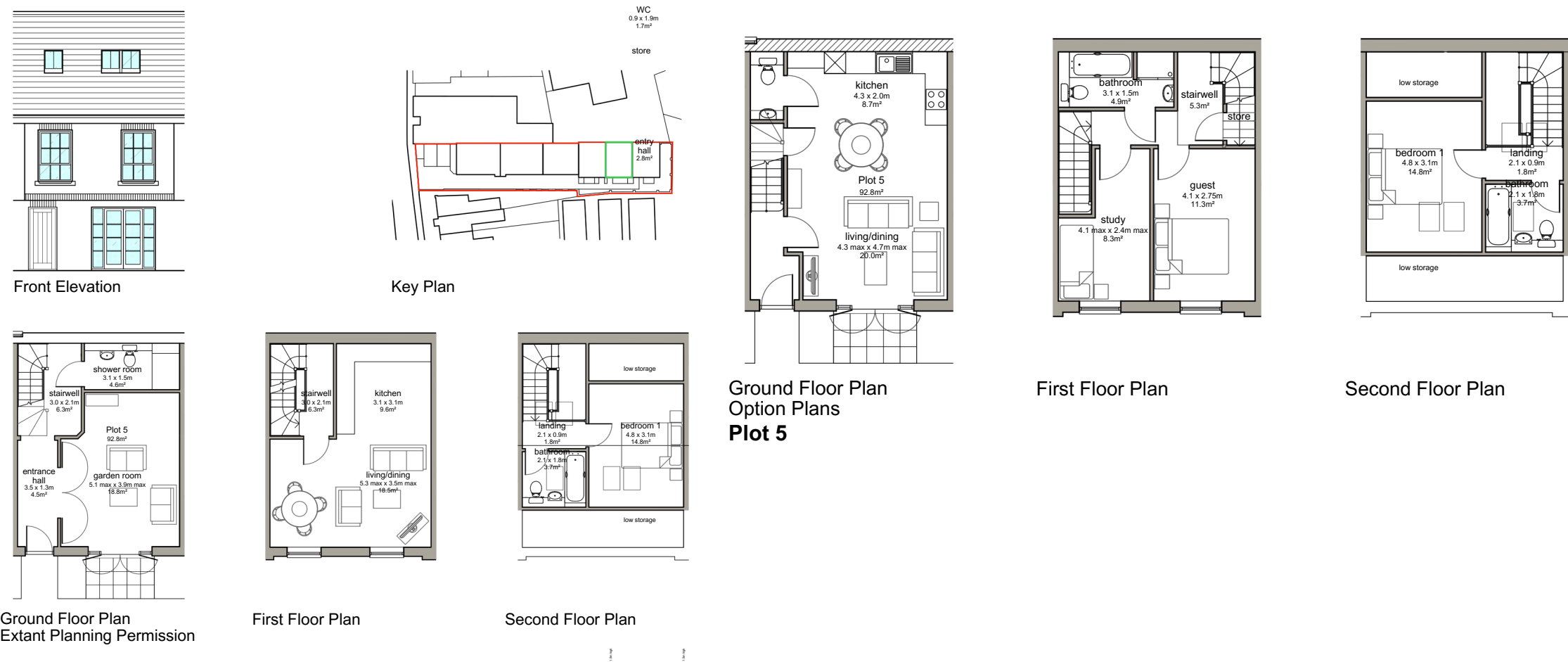
First Floor Plan



Second Floor Plan

Chapel Mews- Floor Plans- Plot 5

Extant planning permission provides 99.64m² GEFA Alternative plan option provides 2 additional rooms

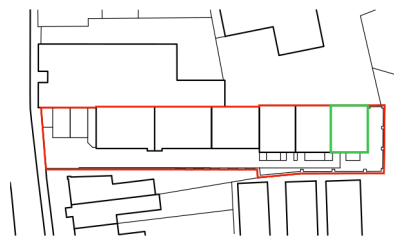


Chapel Mews- Floor Plans- Plot 6

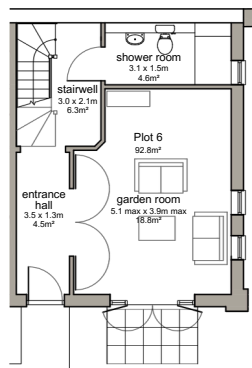
Extant planning permission provides 99.64m² GEFA Alternative plan option provides 2 additional rooms



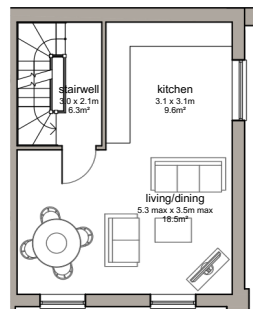
Front Elevation



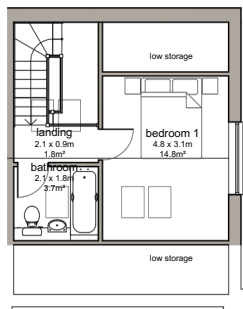
Key Plan



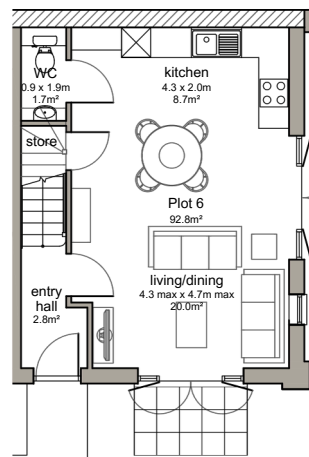
Ground Floor Plan
Extant Planning Permission



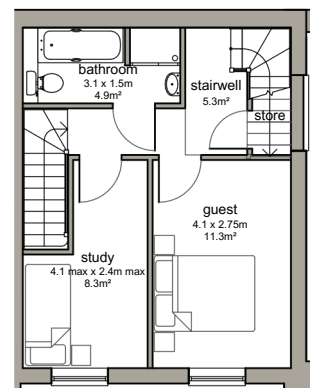
First Floor Plan



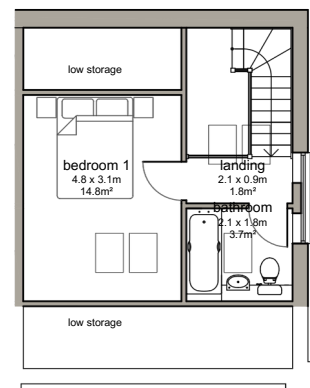
Second Floor Plan



Ground Floor Plan
Option Plans
Plot 6



First Floor Plan

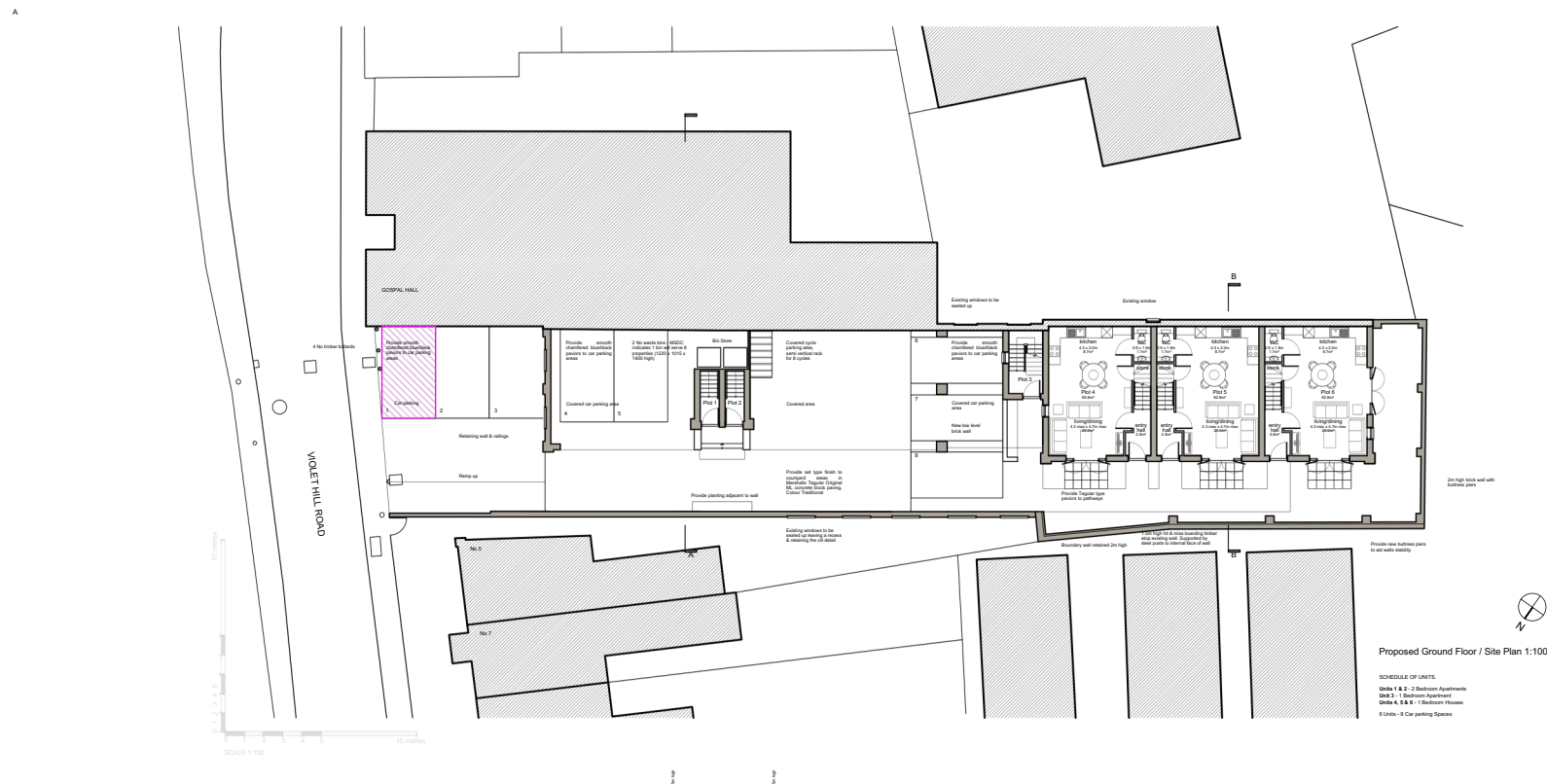


Second Floor Plan

Alternative Parking Option

Chapel Mews Site Plan showing location of possible additional parking bay highlighted in magenta

Extant planning permission provides 7 parking bays in total Alternative plan shows possible location of 1 additional parking bays





Purbeck & Co

2b Station Road West,

Stowmarket, Suffolk

IP14 1ES

Telephone: 01449 77113

Purbeck & Co has taken every care to ensure the accuracy of this brochure but the particulars, elevations, floor plans and dimensions contained herein do not form any contract and cannot be guaranteed. Purbeck & Co reserves the right to alter or amend specifications and designs. Only Purbeck & Co have the authority to make or give any representation or warranty whatsoever in relation to its developments or properties. Illustrations are artist's impressions only and elevations on individual plots may vary. All kitchen and bathroom layouts shown are indicative and are shown for illustration purposes only. All dimensions given are approximate and should not be used for measuring purposes.