

108 Ensbury Park Road, Ensbury Park ,
Bournemouth, Dorset , BH9 2SL

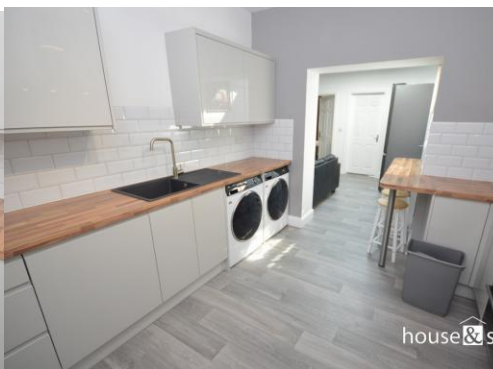
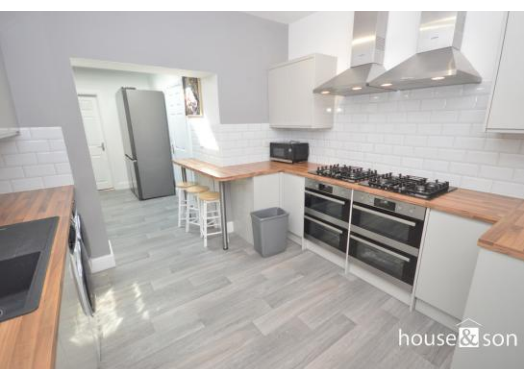
8 Bedrooms

house & son

www.houseandson.net

01202 244844

doug.g@houseandson.net



Features:

8 DOUBLE BEDROOMS

REFURBISHED & EXTENDED
SUMMER 2024

2 x EN-SUITE SHOWER ROOM,
1 x SHOWER ROOM & 1
BATHROOM

***HIGH SPECIFICATION
THROUGHOUT***

FLAT SCREEN TV INCLUDED

PARKING FOR 2 CARS

LOW MAINTENANCE
GARDEN



Description:

A LUXURY & MODERN 8 double bedroom SPACIOUS student house, ***FULLY RENNOVATED IN SUMMER 2024,*** offered with 2 x EN-SUITE SHOWER ROOMS, bathroom & additional shower room. FULLY FURNISHED. The property benefits from NEW CARPETS, newly decorated & NEW FURNITURE, large open plan kitchen/lounge with FLAT SCREEN TV & skylight, NEW BOILER 2022, & ample bike storage. ***HIGH SPECIFICATION KITCHEN***, with 2 x BOSCH gas hobs & 2 x BOSCH double electric ovens, 2 x SAMSUNG fridge/freezers, 2 x washer/dryers, AEG integrated DISHWASHER & TUMBLE DRYER. Gas central heating & UPVC double glazed throughout. En-suite shower & additional shower room all have shower cubicle, ELECTRIC SHOWER, wash hand basin & WC. Bathroom with bath, overhead shower, wash hand basin & WC. Patio door leading onto LOW MAINTENANCE SHINGLE GARDEN. Off road parking for 2 cars. First to see, will take. 50 WEEK TENANCY. Council Tax Band C. ***FULLY MANAGED***

£4,200 pcm

Available 22nd August 2025

Tenancy Info: 50 weeks tenancy

Deposit: £4846.00

EPC: D66