



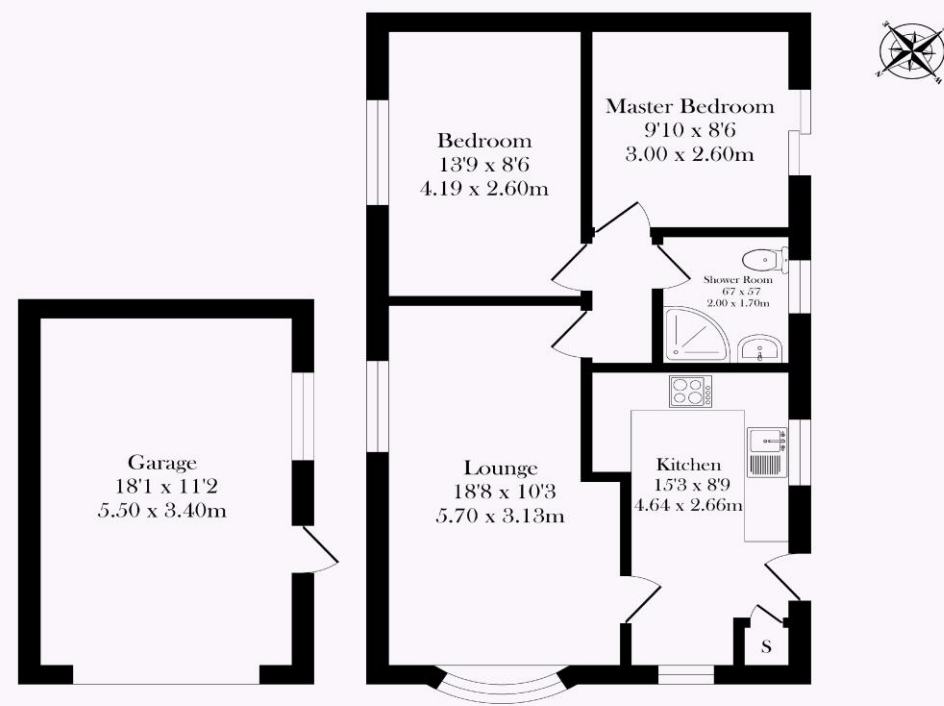
TRACY PHILLIPS

Estates



TRACY PHILLIPS

Estates



Garage
Approx. Floor
Area 18.7 Sq.M
(201 Sq.Ft.)

Approx. Floor
Area 54.7 Sq.M
(588 Sq.Ft.)

Total Approx. Floor Area 73.4 Sq.M. (789 Sq.Ft.)

Surveyed and drawn by Lens Media for illustrative purposes only. Not to scale. Whilst every attempt was made to ensure the accuracy of the floor plan, all measurements are approximate and no responsibility is taken for any error.

TRACY PHILLIPS
Estates



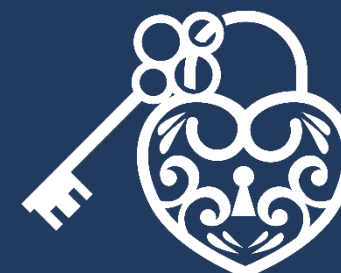
01257 422228

enquiries@tracyphillipsestates.com

tracyphillipsestates.com

Asking Price: £240,000

Broadriding Road, Shevington



Every care has been taken with the preparation of this Sales Brochure but it is for general guidance only and complete accuracy cannot be guaranteed. If there is any point, which is of particular importance professional verification should be sought. This Sales Brochure does not constitute a contract or part of a contract. We are not qualified to verify tenure of property. Prospective purchasers should seek clarification from their solicitor or verify the tenure of this property for themselves by visiting www.landregisteronline.gov.uk. The mention of any appliances, fixtures or fittings does not imply they are in working order. Photographs are reproduced for general information and it cannot be inferred that any item shown is included in the sale. All dimensions are approximate.

This beautifully presented detached bungalow in the peaceful village of Shevington offers a perfect blend of comfort and style. With two spacious bedrooms, it is ideal for those seeking a low-maintenance home without compromising on modern living.

The bright and airy spacious lounge is bathed in natural light and has space for a dining table. The kitchen is fitted with a wide range of wall and base units and has an extractor hood over the cooking area. There is a shower room comprising a three piece suite incorporating a shower cubicle with seat, vanity wash hand basin and w.c. The master bedroom is generously sized, complete with wardrobes, whilst the second bedroom overlooks the delightful garden, providing a peaceful retreat.

Externally, the bungalow is set on a good-sized corner plot with gardens that wrap around the front, side and rear. There is a driveway for two vehicles and a charming rear garden that serves as an idyllic space for outdoor enjoyment complemented by a well-kept lawn and a detached garage, adding to the property's appeal.

This home truly offers a blend of comfort, style and practicality making it a perfect place to call home. Shevington village is just a short stroll away, offering a range of shops, dining options, and well-regarded schools.

The property is offered for sale CHAIN FREE.



