



TRACY PHILLIPS

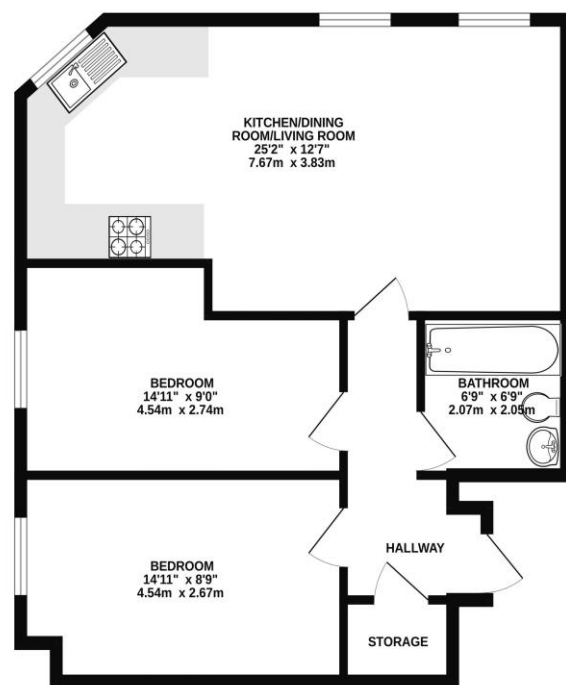
Estates



TRACY PHILLIPS

Estates

GROUND FLOOR
658 sq.ft. (61.2 sq.m.) approx.



TOTAL FLOOR AREA: 658 sq.ft. (61.2 sq.m.) approx.
While every attempt has been made to ensure the accuracy of the floorplan contained here, measurements of doors, windows, rooms and any other items are approximate and no responsibility is taken for any error, omission or mis-statement. This plan is for illustrative purposes only and should be used as such by any prospective purchaser. The services, systems and appliances shown have not been tested and no guarantee as to their operability or efficiency can be given.
Made with Metaphor 02/23



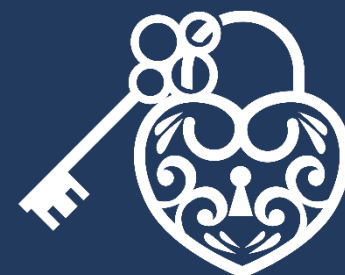
01257 422228

enquiries@tracyphillipsestates.com

tracyphillipsestates.com

Asking Price: £165,000

Preston Road, Standish



Every care has been taken with the preparation of this Sales Brochure but it is for general guidance only and complete accuracy cannot be guaranteed. If there is any point, which is of particular importance professional verification should be sought. This Sales Brochure does not constitute a contract or part of a contract. We are not qualified to verify tenure of property. Prospective purchasers should seek clarification from their solicitor or verify the tenure of this property for themselves by visiting www.landregisteronline.gov.uk. The mention of any appliances, fixtures or fittings does not imply they are in working order. Photographs are reproduced for general information and it cannot be inferred that any item shown is included in the sale. All dimensions are approximate.

Located on the first floor of this recently built apartment building in the heart of Standish village, this lovely modern apartment which was completed approximately four years ago, is an ideal first purchase or a perfect lock up and leave. It is within a short stroll to shops and amenities and also within walking distance to the village's highly acclaimed schools. Beautifully presented internally and set within this smart modern building this energy efficient apartment has a versatile layout.

The accommodation briefly comprises a clean communal entrance hallway with access from both the main road and the car park which is situated at the rear. There is an inner hallway leading through in to the main reception area which is an open plan lounge with dining space and kitchen area. Filled with natural light via three windows, this lovely room is fitted with a range of high gloss cream units and includes a gas hob and eye level oven and also an integrated fridge freezer. LVT tiling flows through the room. There are two excellent bedrooms at the property both of which are beautifully presented and the decor is finished to a lovely standard. The family bathroom comprises a three piece suite including a 'P' shaped bath with overhead shower, wash hand basin and w.c and smart modern neutral tiling finished the room completely.

Standish village is all on hand with excellent transport links, a lively centre and yet countryside on its doorstep.

Viewings of this lovely apartment are now welcomed.





