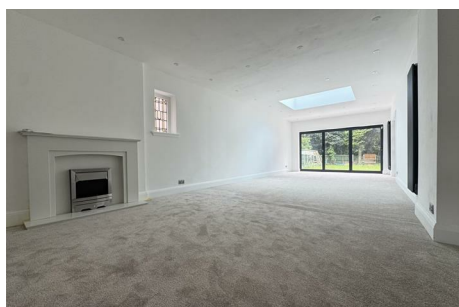


Englesteade Close, Birmingham, B20 1BJ

£1,199,999



- EXTENDED DETACHED FAMILY HOME
- MODERN HIGH SPEC FAMILY BATHROOM
- EXTENDED OPEN PLAN KITCHEN / DINER / SITTING ROOM
- NO UPWARD CHAIN
- SEVEN BEDROOMS (SIX DOUBLE)
- SPACIOUS FRONT RECEPTION ROOM
- SEPARATE UTILITY & GUEST DOWNSTAIRS W.C.
- TWO EN SUITE SHOWER ROOMS
- EXTENDED LARGE REAR RECEPTION ROOM
- LARGE DRIVEWAY & INTERNAL GARAGE

Contact us for more details:
 Tel: 0121 358 6222 Email: greatbarr@acres.co.uk

Full listings online at www.acres.co.uk