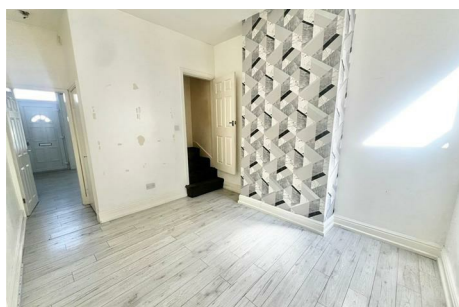
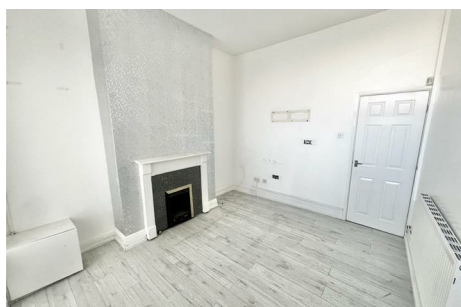


Watville Avenue, Handsworth, B21 0DH

Offers Over £160,000



- END OF TERRACED FAMILY HOME
- ADDITIONAL REAR RECEPTION ROOM
- LARGE REAR GARDEN
- NO UPWARD CHAIN
- TWO DOUBLE BEDROOMS
- MODERN FITTED KITCHEN
- QUITE CUL-DE-SAC LOCATION
- SPACIOUS FRONT RECEPTION ROOM
- MODERN FAMILY BATHROOM
- IDEAL INVESTMENT OR FIRST TIME BUY

Contact us for more details:
 Tel: 0121 358 6222 Email: greatbarr@acres.co.uk

Full listings online at www.acres.co.uk