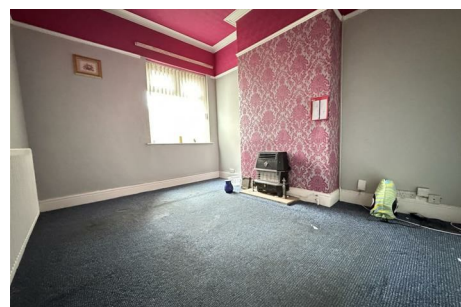
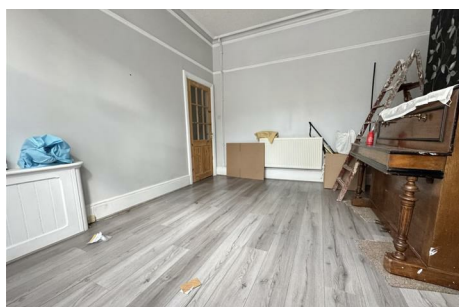
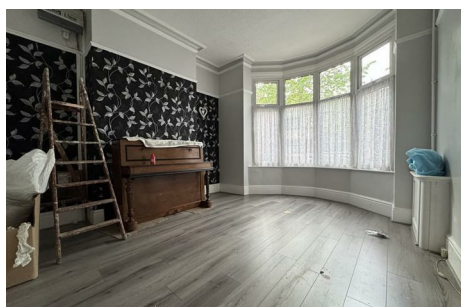


Earlsbury Gardens, Birmingham, B20 3AF

£260,000



- MID TERRACED FAMILY HOME
- MODERN FITTED KITCHEN
- LOW MAINTENANCE REAR GARDEN
- SPACIOUS INTERIORS THROUGHOUT
- FOUR DOUBLE BEDROOMS
- DOWNSTAIRS SHOWER ROOM / W.C.
- IDEAL INVESTMENT
- THREE RECEPTION ROOMS
- FIRST FLOOR FAMILY BATHROOM
- PRIME LOCATION

Contact us for more details:
Tel: 0121 358 6222 Email: greatbarr@acres.co.uk

Full listings online at www.acres.co.uk