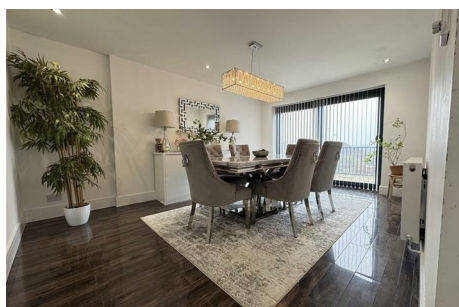


Elmbank Grove, Birmingham, B20 1JT

Offers In The Region Of £475,000



- EXTENDED DETACHED FAMILY HOME
- FOUR DOUBLE BEDROOMS
- MODERN FAMILY BATHROOM
- THREE SPACIOUS RECEPTION ROOMS
- SEPARATE UTILITY ROOM
- DOWNSTAIRS SHOWER ROOM
- HIGH SPEC THROUGHOUT
- MASTER BEDROOM WITH WALK IN WARDROBES + EN SUITE
- EXTENDED OPEN PLAN KITCHEN / DINER
- LARGE REAR GARDEN

Contact us for more details:
 Tel: 0121 358 6222 Email: greatbarr@acres.co.uk

Full listings online at www.acres.co.uk