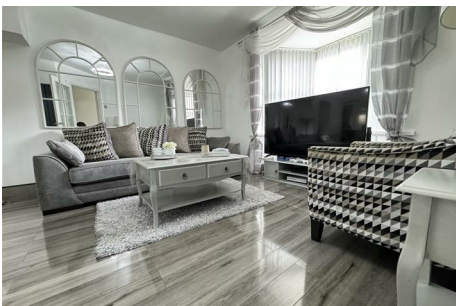


Aylesbury Crescent, Birmingham, B44 0DT

Offers Over £270,000



- EXTENDED MID TERRACED FAMILY HOME
- OPEN PLAN EXTENDED KITCHEN / DINER
- OFF ROAD PARKING TO FRONT
- PRIME LOCATION
- FOUR BEDROOMS + LOFT ROOM
- DOWNSTAIRS SHOWER ROOM
- EXTREMELY SPACIOUS INTERNALLY
- SPACIOUS THROUGH LOUNGE
- MODERN FAMILY BATHROOM
- HIGH SPEC THROUGHOUT

Contact us for more details:
Tel: 0121 358 6222 Email: greatbarr@acres.co.uk

Full listings online at www.acres.co.uk