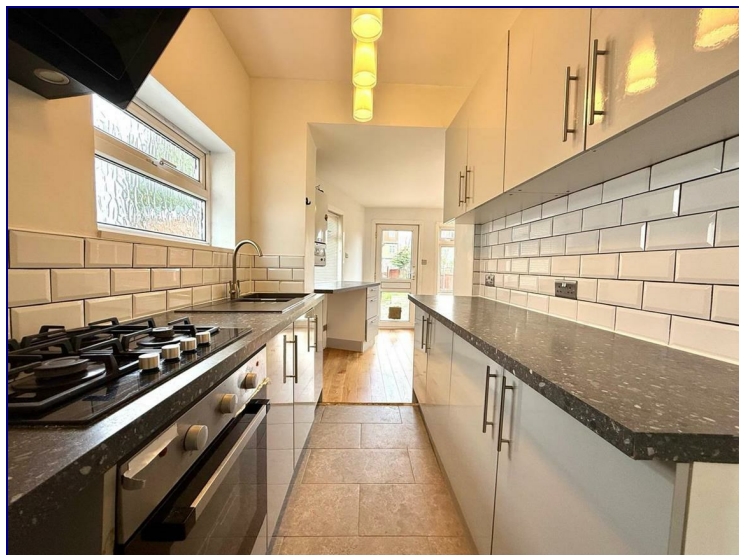




www.kings-group.net

23 Silver Street
Enfield Town EN1 3EF
Tel: 0208 3669 717

Chailey Avenue, Enfield, EN1 3LY



£2,350 PCM

Three Bedroom End of Terrace House with Off Street Parking, Available Now.

Occupants will benefit from a spacious through lounge leading to a fitted kitchen, great size family garden with use of a shed for storage, first floor three piece bathroom suite, two double bedrooms alongside one single bedroom.

Situated in the ever popular Willow Estate. This property is conveniently located within close proximity of Enfield Town Centre which boasts an array of shops and restaurants. Furthermore the property provides easy access to transport links including local bus routes and Enfield Town Station.



