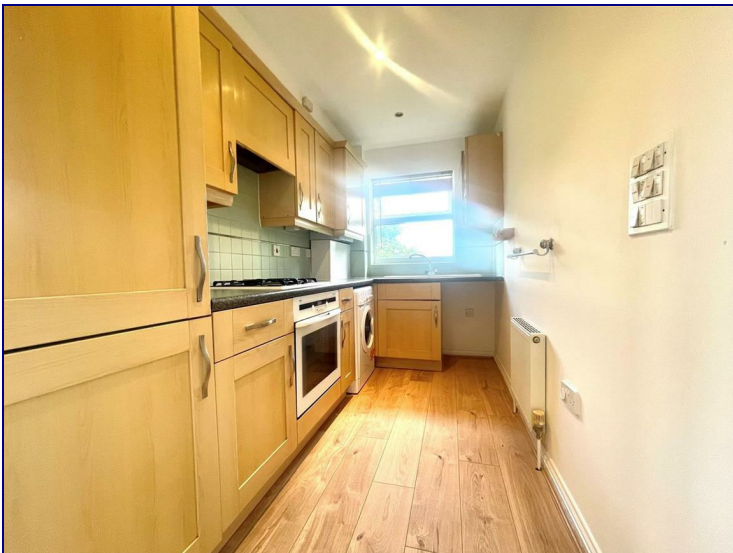


Cobham Close, Middlesex, EN1 3SU



£1,750 PCM

Two Bedroom Apartment with LIFT ACCESS and juliette balcony overlooking Enfield Playing Fields. Available 26th September.

Occupants will benefit from allocated parking, fitted kitchen with appliances, three piece bathroom suite, two double bedrooms with en-suite to master and spacious living room.

The property is located within a short distance to Enfield Town BR Station and walking distance to Enfields Retail Park with its array of shops / restaurants.



