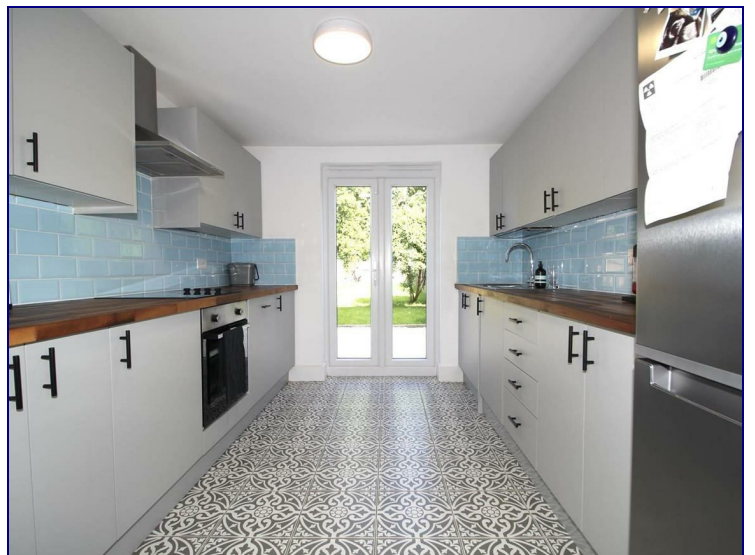


Fotheringham Road, Enfield, EN1 1QE



£2,550 PCM

Beautifully Presented Four Bedroom Victorian House located within walking distance of Enfield Town Overground Station.

Available 11th September.

The accommodation comprises two reception rooms, fitted kitchen, 1st floor family bathroom, three good size bedrooms to the 1st floor, loft conversion including a fourth bedroom and an approximate 80ft rear garden.

Offered Furnished/Part Furnished.

This ideal family home falls within the catchment areas of some of Enfield's most sought after schools including George Spicer Primary and Bush Hill Park Primary Schools. The property is also conveniently located for access to local shops and amenities including Enfield's Retail Park. The A10 / A406 and M25, all of which offer good road links to the surrounding areas are just a short drive from the property.



