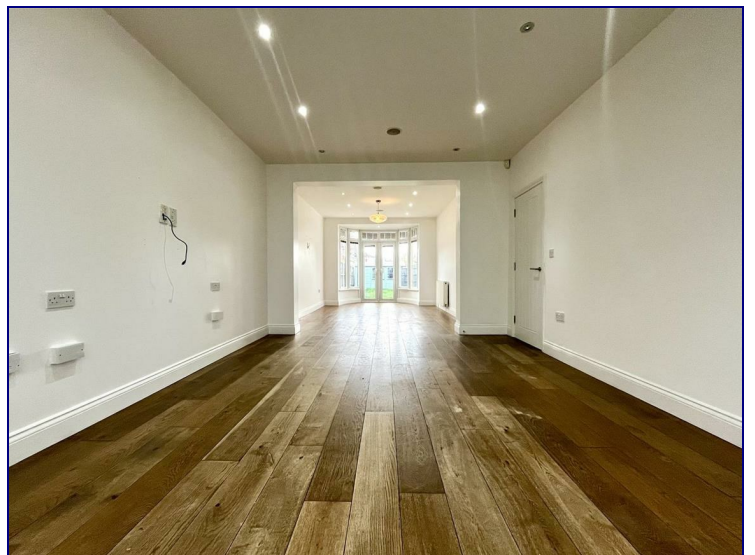
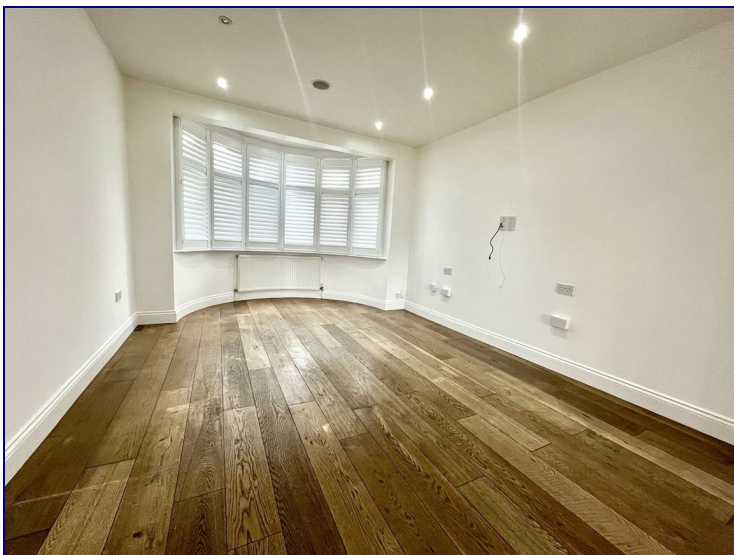


Amberley Gardens, Enfield, EN1 2NE



£2,800 PCM

Beautifully presented Four Bedroom House with Off Street Parking, Available Now.

Occupants will benefit a modern kitchen with integrated appliances, spacious through lounge leading to an easily maintainable garden with storage and rear access. The first floor offers two double bedrooms with fitted storage to one, one single bedroom and a four piece family bathroom suite. The second floor boats a spacious fourth bedroom with a well presented en-suite and separate walk in wardrobe. Additional benefits include off street parking and newly fitted shutter blinds.

This property is conveniently located a few moments from the A10 giving great access to surrounding areas. You will also find local amenities and shops within walking distance aswell as Enfield Retail park with its array of shops and restaurants within close proximity.



