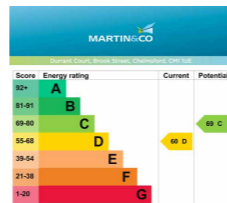


**Martin & Co Chelmsford**

2 Watson Heights  
Chelmsford • Essex CM1 1AF

**01245 330500**

chelmsford@martinco.com  
chelmsford.martinco.com



Accuracy: References to the Tenure of a Property are based on information supplied by the Seller. The Agent has not had sight of the title documents. A Buyer is advised to obtain verification from their Solicitor. Items shown in photographs including but not limited to carpets, fixtures and fittings are not included unless specifically mentioned within the sales particulars. They may however be available by separate negotiation. Buyers must check the availability of any property and make an appointment to view before embarking on any journey to see a property. No person in the employment of the agent has any authority to make any representation about the property, and accordingly any information given is entirely without responsibility on the part of the agents, sellers(s) or lessors(s). Any property particulars are not an offer or contract, nor form part of one. Sonic / Laser Tape: Measurements taken using a sonic / laser tape measure may be subject to a small margin of error. All Measurements: All Measurements are Approximate. Services Not tested: The Agent has not tested any apparatus, equipment, fixtures and fittings or services and so cannot verify that they are in working order or fit for the purpose. A Buyer is advised to obtain verification from their Solicitor or Surveyor.

# Durrant Court, Chelmsford



- 2
- 1
- 1
- 1

Stylish two bed apartment in Durrant Court, Chelmsford. Features spacious open-plan living, stunning kitchen, and city-centre convenience.

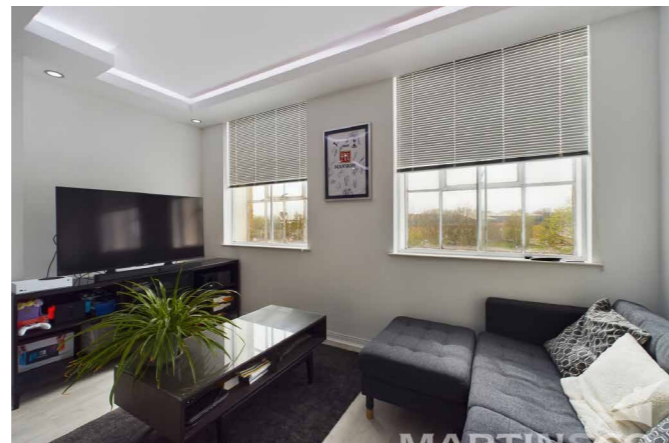
**Guide Price £240,000**



Durrant Court,  
Chelmsford

**Guide Price £240,000**

- Stylish open-plan kitchen
- Allocated parking
- City Centre
- Modern apartment



### Urban Oasis in the Heart of Chelmsford

Welcome to your urban oasis in the heart of Chelmsford. This delightful 2-bedroom apartment in Durrant Court offers a perfect blend of style, comfort, and convenience.

### Bright and Airy Living Space

Step inside to discover a bright and airy open-plan kitchen and living area, ideal for relaxing or entertaining guests. The kitchen is a chef's dream with its modern design and high-end appliances, making meal preparation a joy.

### Spacious Bedrooms and Luxurious Bathroom

The apartment boasts two generously sized bedrooms, providing ample space for rest and relaxation. The contemporary bathroom adds a touch of luxury with its sleek finishes and modern fixtures.

### Prime City Center Location

One of the standout features of this property is its prime city center location. Situated in the vibrant heart of Chelmsford, residents can enjoy easy access to an array of amenities, including shops, restaurants, cafes, and cultural attractions. Whether you're commuting to work or exploring the city, everything you need is right on your doorstep.

### Convenient Parking

Parking is often a concern in city living, but not here. This apartment comes with an allocated parking space, providing added convenience and peace of mind for residents.

### Room Dimensions

ENTRANCE HALL  
KITCHEN / DINING ROOM  
18' 4" x 13' 5" (5.59m x 4.09m)  
STORE  
LOUNGE  
9' 10" x 15' 1" (3m x 4.6m)  
BEDROOM 1  
9' 3" x 8' 5" (2.82m x 2.57m)  
BEDROOM 2  
12' 10" x 8' 8" (3.91m x 2.64m)  
BATHROOM  
5' 1" x 8' 8" (1.55m x 2.64m)

