



Connells

Oceana Crescent
Beggarwood Basingstoke



Property Description

TWO BEDROOM SEMI DETACHED HOME in the popular area of BEGGARWOOD, BASINGSTOKE comprising of CLOAKROOM, Lounge, Kitchen, ENSUITE, GARAGE and Driveway Parking, NO ONWARD CHAIN

Oceana Crescent is ideally located within close proximity to a range of amenities that include local supermarket, healthcare provisions, and excellent schools. Beggarwood enjoys a great setting, living here you can enjoy great green space surroundings and become part of a vibrant local community. By road, the nearby M3 provides an excellent link to London and the South Coast.

Entrance Hall

Double glazed glass panel front door, storage cupboard, archway to kitchen, door to lounge, door to :

Cloakroom

Low level WC, wall mounted wash hand basin, extractor fan

Kitchen

10' max x 6' 2" max (3.05m max x 1.88m max)

Double glazed window to front aspect, roll top work surfaces with cupboards and drawers under and cupboards over, fitted 4 ring gas hob with electric oven under and hood over, sink with drainer and mixer tap , space for washing machine, space for upright fridge freezer, cupboard housing gas boiler.

Lounge/diner

19' 2" max x 12' 6" max (5.84m max x 3.81m max)

Double glazed french doors to rear garden, double glazed window to side aspect, fitted electric fire, stairs to first floor.

First Floor

Landing

Loft access doors to :

Bedroom One

12' 8" max x 12' 7" max (3.86m max x 3.84m max)

Double glazed window to rear aspect, airing cupboard, door to:

Ensuite Shower Room

Double glazed frosted window to side aspect, fully tiled shower cubicle, low level wc, vanity wash hand basin

Bedroom Two

12' 6" max x 8' 4" max (3.81m max x 2.54m max)

Double glazed window to front aspect, door to

Ensuite Bathroom

Double glazed frosted to side aspect, panel enclosed bath with mixer tap and shower attachment, vanity wash hand basin, low level wc, extractor fan

Outside

Rear Garden

Small patio area, remainder laid to lawn, fully enclosed gate for side access

Parking

Driveway parking space which leads to:

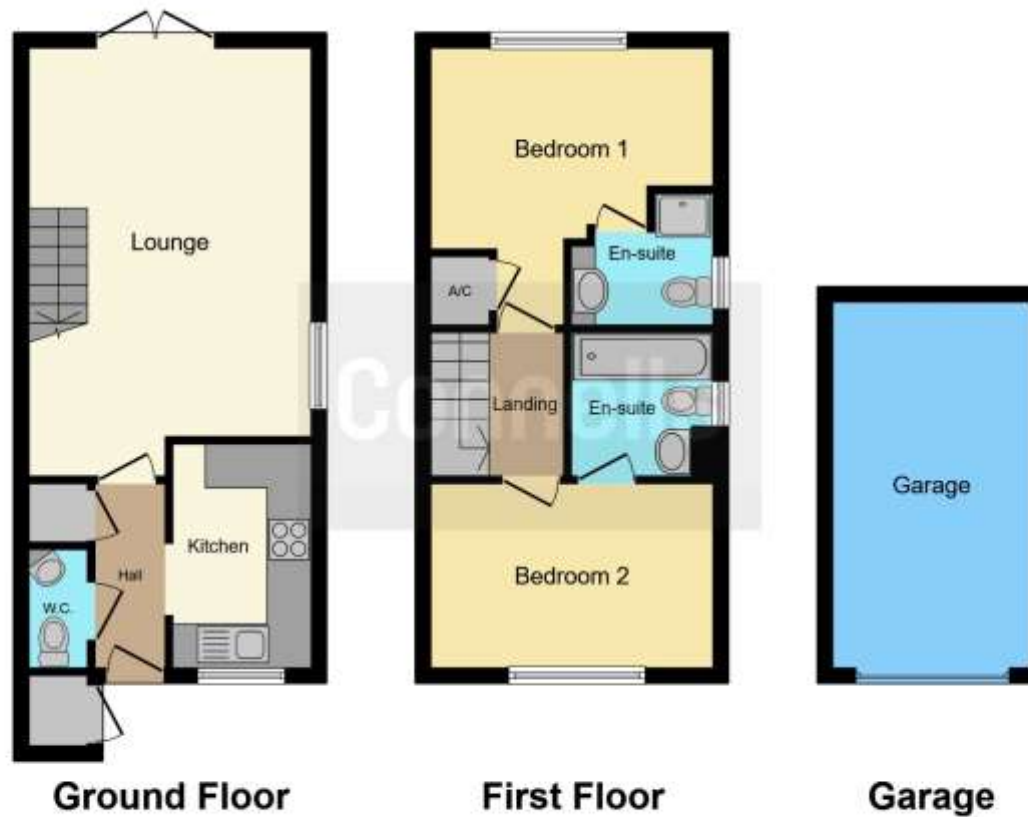
Garage

Up and Over Door









This floorplan is for illustrative purposes only and is not drawn to scale. Measurements, floor-areas, openings and orientations are approximate. They should not be relied upon for any purpose and do not form any part of an agreement. No liability is taken for any error or mis-statement. All parties must rely on their own inspections.

To view this property please contact Connells on

T 01256 398237
E basingstokesouth@connells.co.uk

56 Broadmere Road Beggarwood
 BASINGSTOKE RG22 4AQ

EPC Rating: C

Tenure: Freehold

check out more properties at connells.co.uk



1. MONEY LAUNDERING REGULATIONS Intending purchasers will be asked to produce identification documentation at a later stage and we would ask for your co-operation in order that there will be no delay in agreeing the sale. 2. These particulars do not constitute part or all of an offer or contract. 3. The measurements indicated are supplied for guidance only and as such must be considered incorrect. Potential buyers are advised to recheck measurements before committing to any expense. 4. We have not tested any apparatus, equipment, fixtures, fittings or services and it is in the buyers interest to check the working condition of any appliances.

Connells Residential is registered in England and Wales under company number 1489613, Registered Office is Cumbria House, 16-20 Hockliffe Street, Leighton Buzzard, Bedfordshire, LU7 1GN. VAT Registration Number is 500 2481 05.

See all our properties at www.connells.co.uk | www.rightmove.co.uk | www.zoopla.co.uk

Property Ref: KSH105105 - 0006