



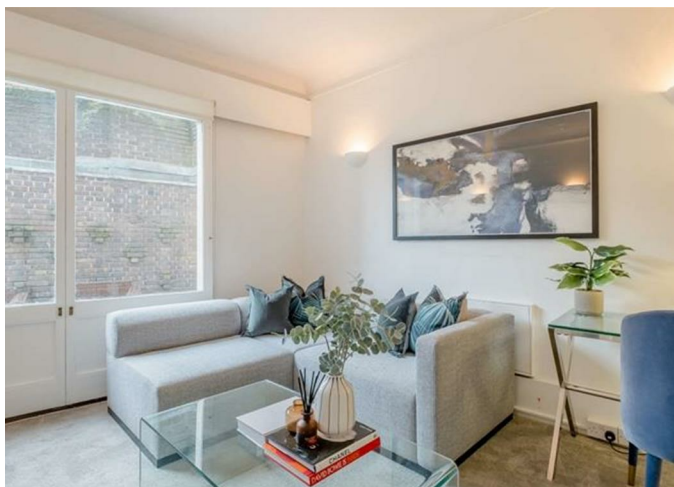
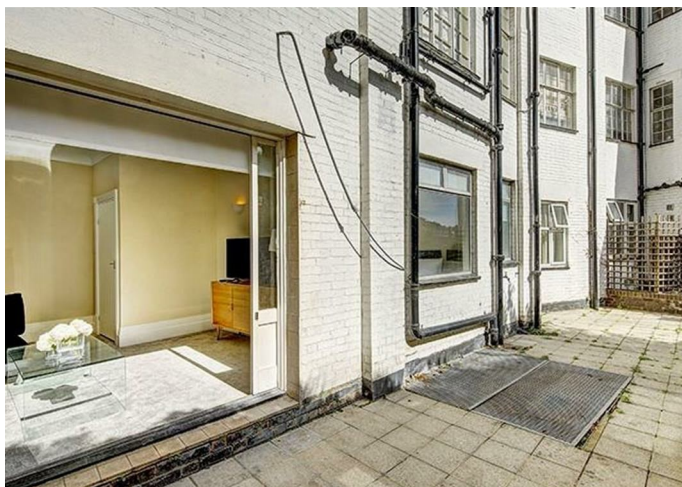
Not specified

**18, PARK ROAD, NW8  
7HY**

Per Month  
**£3,835**

Available: 15th September 2025

FEATURES



 1  1  1  C

**Huddletons**

# 1 Bedroom Not specified located in London

This superb ground floor two bedroom apartment with a large private garden is set within a ported building opposite the stunning Regents Park in St John's Wood.

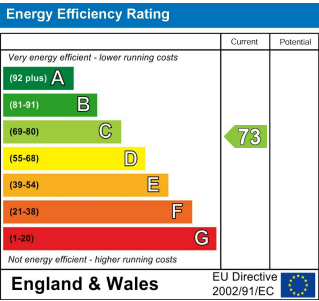
The apartment comprises a large master bedroom with another good sized double bedroom, a brand new bespoke kitchen, spacious reception room and a bright and open dining room.

This apartment is ideally suited to young professionals or students due to its proximity to the West End, as well as a number of top colleges and universities such as the London Business School, University of Westminster and the Royal College of Physicians. Strathmore Court is located within a 10 minute walk from St John's Wood underground station (Jubilee Line) and Marylebone underground and overground station (Bakerloo and national railway). Lords Cricket Ground, along with the large variety of cafés, restaurants and boutique shops in St John's Wood are all easily accessible.

Residential Land is the owner and managing agent of this property. Rent directly from us and pay no agency fees. All of our tenants benefit from a dedicated building manager who is on hand to assist with any property related issues. We also employ a dedicated team of maintenance experts and provide a 24-hour emergency helpline.

Call us on  
**0207 205 4411**  
[info@huddletons.com](mailto:info@huddletons.com)  
<http://www.huddletons.com>

**Council Tax Band**  
**C**



Agents Note: Whilst every care has been taken to prepare these particulars, they are for guidance purposes only. All measurements are approximate and are for general guidance purposes only and whilst every care has been taken to ensure their accuracy, they should not be relied upon and potential buyers are advised to recheck the measurements.

# Huddletons