



Flat

OMEGAS COURT, 675 GREEN LANES, N8 0QY

Per Calendar
£2,600

Available: 22nd October 2025

FEATURES

- Brand new development
- Spacious open plan living area
- High-end finish throughout
- Two bathrooms, one separate ensuite
- Modern and stylish design
- Fully equipped modern kitchen
- Two double bedrooms, providing ample space
- Private balcony



Huddletons



2 Bedroom Flat located in London

Welcome to this stunning apartment located at 675 Green Lanes in the vibrant city of London. This brand new development boasts a modern and stylish design, perfect for those seeking a contemporary living space.

As you step into the property, you are greeted by a spacious open plan living area, complete with a fully equipped modern kitchen. The high-end finish throughout the apartment exudes luxury and sophistication, creating a welcoming atmosphere for you to relax and entertain.

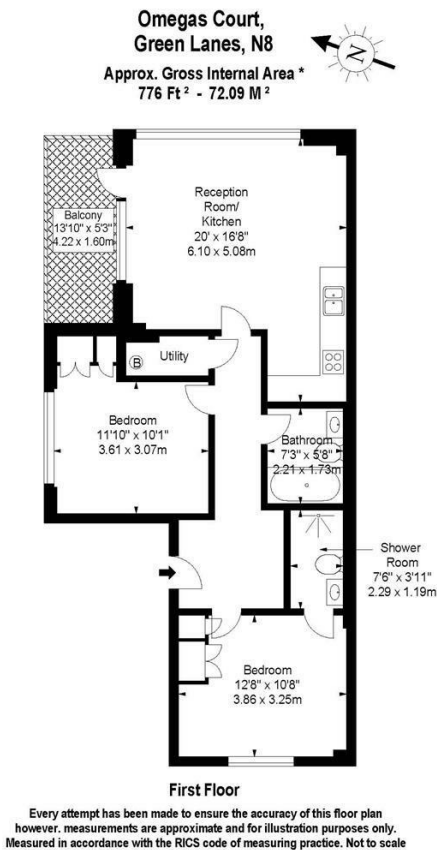
This apartment features two double bedrooms, providing ample space for a growing family or for guests to stay over. With two bathrooms, including one separate ensuite, convenience and comfort are at the forefront of this property.

One of the highlights of this apartment is the private balcony, offering a tranquil outdoor space where you can unwind and enjoy the views of the surrounding area.

Call us on
0207 205 4411

info@huddletons.com
<http://www.huddletons.com>

Council Tax Band
B



Energy Efficiency Rating		
	Current	Potential
Very energy efficient - lower running costs		
(92 plus) A		
(81-91) B	83	83
(69-80) C		
(55-68) D		
(39-54) E		
(21-38) F		
(1-20) G		
Not energy efficient - higher running costs		
England & Wales		
	EU Directive 2002/91/EC	

Agents Note: Whilst every care has been taken to prepare these particulars, they are for guidance purposes only. All measurements are approximate and are for general guidance purposes only and whilst every care has been taken to ensure their accuracy, they should not be relied upon and potential buyers are advised to recheck the measurements.

Huddletons